

W. R. MEADOWS®

SEALTIGHT®

AIR-SHIELD

AIR-SHIELD™

Air barriers - Designing for the 21st century.

Ideal applications:

- Cavity walls
- Masonry walls
- Precast concrete
- Cast-in-place concrete
- Interior and exterior gypsum board
- Styrofoam
- Primed steel
- Drywall
- Plywood



If you need more information about how our products can help you prevent costly air migration, here are four quick and easy access points:

- Visit our comprehensive website: www.wrmeadows.com
- Contact W. R. MEADOWS, INC. via email: info@wrmeadows.com
- Call toll free: 1-800-342-5976
- Fax: 1-847-683-4544



W. R. MEADOWS, INC.
 P.O. Box 338 • Hampshire, IL 60140-0338
 Phone: 847/214-2100 • Fax: 847/683-4544
www.wrmeadows.com

HAMPSHIRE, IL / CARTERSVILLE, GA / YORK, PA
 FORT WORTH, TX / BENICIA, CA / POMONA, CA
 GOODYEAR, AZ / MILTON, ON / ST. ALBERT, AB

#BR-2

Whatever your needs...
we have the solution.



FACT:

Uncontrolled air leakage through the building envelope will affect the performance of the building materials within the wall assembly.

You've made a major investment in your facilities and that investment deserves the very best protection available. There's only one company that has consistently helped owners protect their buildings against uncontrolled air leakage which can result in:

- Indoor air quality issues
- Inflated energy costs
- Mold growth
- Efflorescence
- Degradation of building components

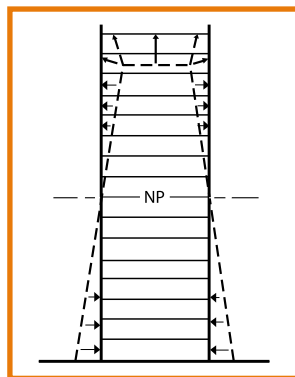
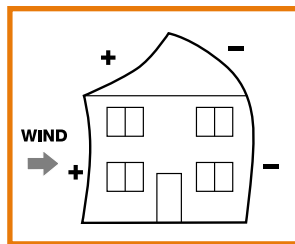
For over 80 years, **W. R. MEADOWS** has been recognized as the leader in developing and producing quality products for the construction industry. We have built a coveted reputation among architects, engineers and contractors for producing the highest quality products backed by 80+ years of experience. Remember, air barriers are required in all new federal construction. Choose W. R. MEADOWS air barrier products - we have the right product for your application requirements.

How does air move through my building?

Air will move through the building if there is a pressure difference across the building envelope. As a result, any hole or penetration in the building envelope can allow moisture-laden air to move through the wall.

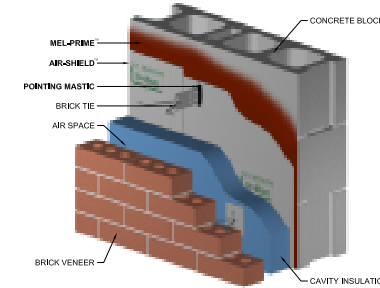
Air is moved by:

- Building location and wind
- Stack (or chimney) effect
- Mechanical means (HVAC systems)

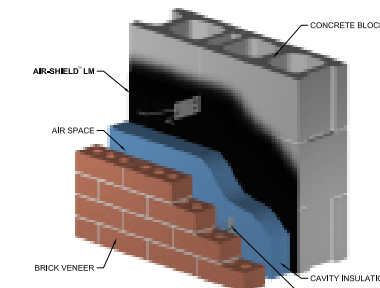


So how do we prevent air movement?

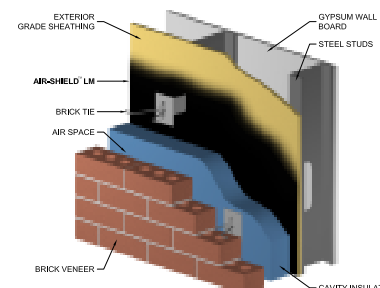
AIR-SHIELD air/liquid moisture barrier from **W. R. MEADOWS** is available in five different versions, based on what your building needs entail.



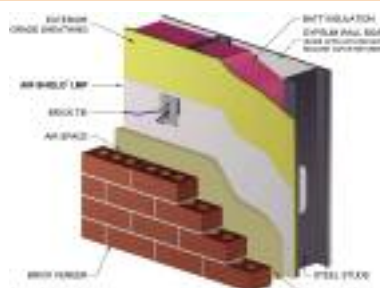
AIR-SHIELD self-adhering air/vapor and liquid moisture barrier is a part of a total system to complete the building envelope. It is a roll-type product that is nominally 40 mils thick. This unique, self-adhesive membrane, protected by a special release paper, is strong and durable. It remains flexible when surface mounted and will adhere to most primed surfaces at minimum temperatures of 40° F (4° C). [A low temperature version for applications between 20° F (-7° C) and 60° F (16° C) is also available.]



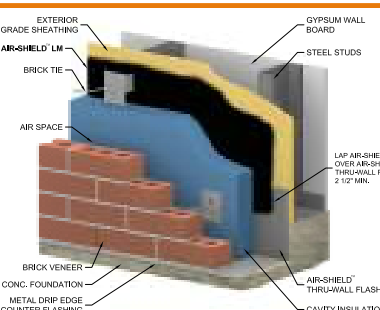
AIR-SHIELD LM is a liquid applied, water-based, polymer-modified air/vapor and liquid moisture barrier. AIR-SHIELD LM cures to form a tough, seamless, elastomeric membrane, which exhibits excellent resistance to air and moisture transmission.



AIR-SHIELD LM (ALL SEASON) is also a single component, liquid applied, polymer-modified air/vapor and liquid moisture barrier, but unlike AIR-SHIELD LM, it can be applied at temperatures as low as 10° F (-12° C). AIR-SHIELD LM (ALL SEASON) still maintains its low permeability and excellent adhesion, even in low temperatures.



AIR-SHIELD LMP is also a single component, liquid applied, vapor permeable air/liquid moisture barrier. AIR-SHIELD LMP stops the movement of air, while at the same time, allowing the passage of vapor. The product is designed for wall assemblies that need a vapor permeable air barrier.



AIR-SHIELD THRU-WALL FLASHING is a self-adhering, flexible membrane flashing. It is a roll-type product that is nominally 40 mils thick. This material is an air, vapor and liquid moisture barrier. AIR-SHIELD THRU-WALL FLASHING is a concealed flashing for masonry concrete, wood/steel frames and roofing applications – door and window lintels, sills, spandrel beams, caps and parapets. AIR-SHIELD THRU-WALL FLASHING is designed for use as a thru-wall flashing and dampproofing course.

Drawings are for illustration purposes only and may not be suitable for use in all climate zones.

You can make a difference!

Developed to be used as a complete air and air vapor barrier system, the components, whether liquid or sheet, are designed to work together to help make your building more energy efficient and combat indoor air quality issues. By controlling excessive air flow from your building, you can have a direct impact on our environment. A properly designed air barrier system will reduce the use of energy, which in turn reduces fossil fuel consumption and thus reduces the greenhouse effect.

Call us at 800-342-5976