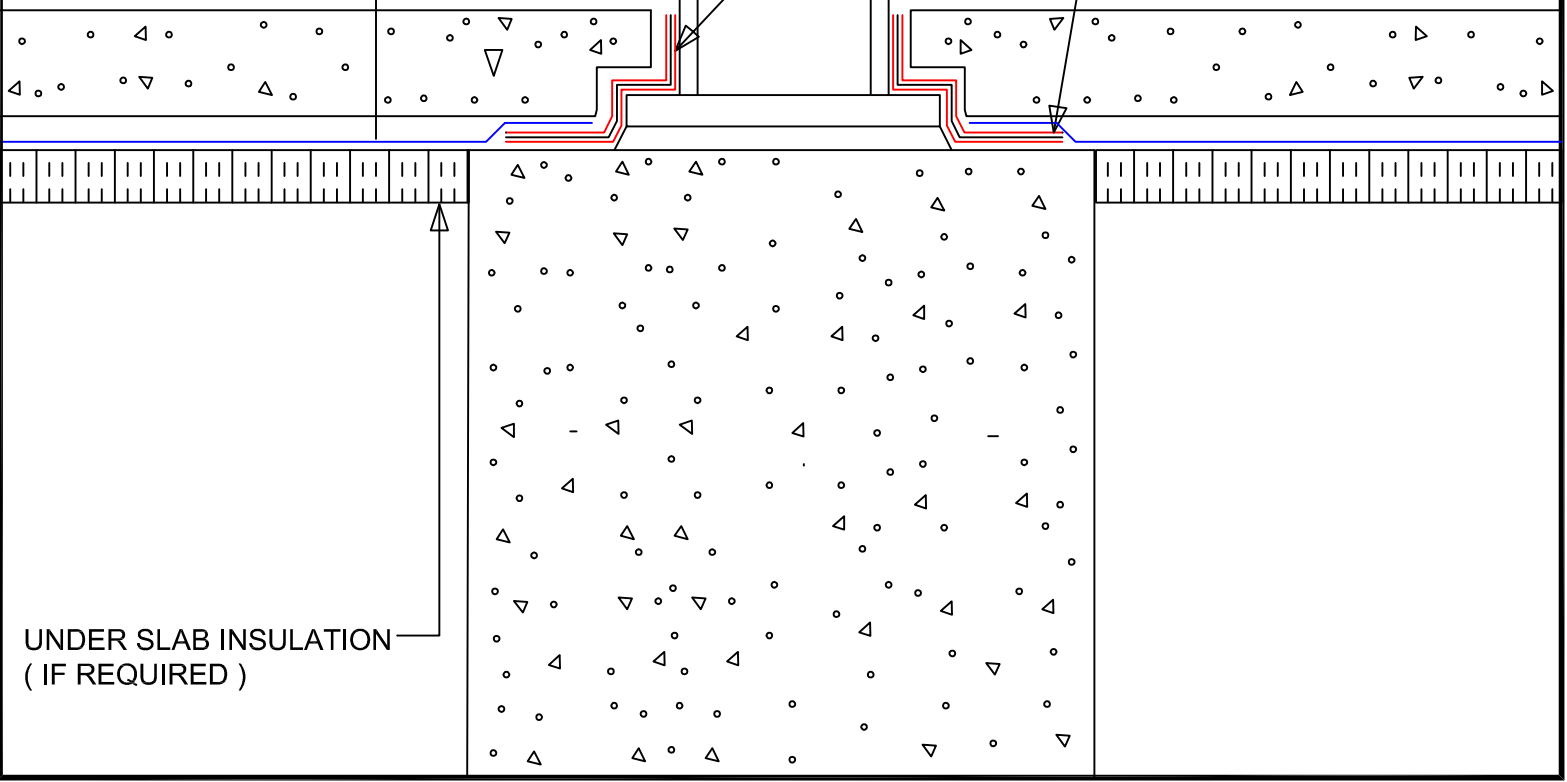


PRECON

FIRST COAT OF HYDRALASTIC 836 APPLIED TO COLUMN AND PRECON. EMBED DETAIL FABRIC INTO THIS FIRST COAT OF HYDRALASTIC 836. APPLY A SECOND COAT OF HYDRALASTIC 836



UNDER SLAB INSULATION  
( IF REQUIRED )

**W.R. MEADOWS, INC.**

300 Industrial Drive  
Hampshire, IL 60140-0338  
1-800-342-5976  
www.wrmeadows.com

SKETCH: COLUMN BASE  
SLAB ON COLUMN BASE  
NON-STRUCTURAL SLAB  
WATER TABLE ABOVE SLAB

SKETCH NO: PRECON - 33

DATE: 07/11/2013