



## DATA SHEET NO. 5110-600

# MEL-ROL® XLT

## Rolled, Self-Adhering, Extra-Low Temperature Waterproofing Membrane

### DESCRIPTION

MEL-ROL XLT waterproofing system is a flexible, versatile, dependable, roll-type waterproofing membrane. It is composed of a nominally 56 mil thick layer of polymeric waterproofing membrane on a heavy duty, four-mil thick, cross-laminated polyethylene carrier film. The two components are laminated together under strict quality-controlled production procedures.

A handy overlap guideline is printed 63.5 mm (2.5") in from the material edge on each side to assure proper overlap coverage and to assist in maintaining a straight application. Special exposed polymeric membrane strips are provided on both sides for positive membrane-to-membrane adhesion in the overlap area. The membrane strips are protected by a pull-off release strip. All components of the MEL-ROL XLT waterproofing system work together to provide a cost-effective, positive waterproofing system that's quick and easy to apply.

W. R. MEADOWS accessory products included in the MEL-ROL XLT waterproofing system are: MEL-PRIME™ adhesive, POINTING MASTIC, TERMINATION BAR, PROTECTION COURSE (VIBRAFLEX® PC) and MEL-DRAIN™ drainage board.

### USES

MEL-ROL XLT provides a cost-effective answer to properly waterproof foundations, vertical walls, and below-grade floors in residential and commercial construction. It is equally effective for use as between-the-slab waterproofing on plaza decks, parking decks, and structural slabs. Use it as a waterproofing membrane to isolate mechanical and electronic rooms, laboratories, kitchens, and bathrooms. MEL-ROL XLT offers positive protection when "wrapped around" major rapid transit, vehicular, utility, and pedestrian tunnel projects. MEL-ROL XLT can also be used on insulated concrete forms (ICF).

Installation of PROTECTION COURSE (VIBRAFLEX PC) from W. R. MEADOWS is recommended before backfilling. MEL-ROL XLT can also be used with drainage boards when specified.

### FEATURES/BENEFITS

- Provides cost-effective, flexible, versatile, dependable, positive waterproofing protection against damaging moisture migration and the infiltration of free water.
- Superior adhesion, even down to -18 ° C.
- Offers a quick and easy-to-apply system for maximum productivity
- Special membrane-to-membrane adhesion provides additional overlap security.
- Meets or exceeds the test requirements of all currently applicable specifications.
- Components work together for positive waterproofing protection.
- Handles with ease on the jobsite.
- MEL-ROL XLT is available in two other grades, dependant on application temperature: standard MEL-ROL and MEL-ROL LOW TEMP.

### PACKAGING

977.9 mm (38.5") wide x 19.1 m (62.5') long, one roll per carton.

### COVERAGE

Provides 18.6 m<sup>2</sup> (200 ft.<sup>2</sup>) per roll. Gross coverage is 18.6 m<sup>2</sup> (200 ft.<sup>2</sup>). [Net coverage is 17.4 m<sup>2</sup> (187.5 ft.<sup>2</sup>) with overlap of 63.5 mm.]

### STORAGE AND HANDLING

Store membrane cartons on pallets and cover if left outside. Keep materials away from sparks and flames. Store membrane where temperature will not exceed 32° C for extended periods of time.

### SPECIFICATIONS

- A.R.E.M.A.® Specifications Chapter 29, Waterproofing

### APPLICATION

**Surface Preparation** ... Concrete should be cured at least 72 hours, be clean, dry, smooth, and free of voids. Repair spalled areas; fill all voids and remove all sharp protrusions.

**W. R. MEADOWS® OF CANADA**  
70 Hannant Court, Milton, ON L9T 5C1  
21 Streambank Ave., Sherwood Park, AB T8H 1N1  
(800) 342-5976  
Montreal Sales: (514) 865-2406

Hampshire, IL / Cartersville, GA / York, PA / Fort Worth, TX  
Benicia, CA / Pomona, CA / Goodyear, AZ / Milton, ON  
Sherwood Park, AB  
[www.wrmeadows.com](http://www.wrmeadows.com)  
[info@wrmeadows.com](mailto:info@wrmeadows.com)

## EXCLUSIVE FEATURES

A handy overlap guideline is printed 63.5 mm (2.5") in from the material edge on each side, assuring proper overlap coverage and assisting in maintaining a straight application. The polymeric waterproofing membrane is protected by a special, easy-to-remove release paper. The exposed membrane strips on the material edges are protected by a pull-off release strip. Exposed polymeric membrane strips are provided on both sides of MEL-ROL XLT for positive membrane-to-membrane adhesion in the overlap area.

Property	Technical Value	Test Method
Colour		
Carrier Film	White	
Polymeric Membrane	Black	
Thickness		
Carrier Film	4 Mils	
Polymeric Membrane	56 Mils	
Tensile Strength		ASTM D412 (Die C)
Carrier Film	40.71 MPa (5900 psi) min.	
Polymeric Membrane	3230 KPa (460 psi)	
Elongation	971.3%	ASTM D412
Low Temp Crack Bridging	Pass	ASTM C836
100 Cycle -32° C		
Peel Adhesion	2068 N/m (11.8 lb./in.)	ASTM D903
Lap Adhesion	1508.5 N/m (8.62 lbf/in.)	ASTM D1876
Water Vapor Permeability	0.036 Perms	ASTM E-96, B
Water Absorption	0.1%, 72 h max.	ASTM D570
Hydrostatic Resistance	Equiv. to 70.38 m (230.9') of water	ASTM D5385
Puncture Resistance	214.6 N (48.24 lbf)	ASTM E154
Exposure to Fungi	Pass, 16 weeks	Soil Test
Flexibility @ -29°	Pass	ASTM D1970

## APPLICATION

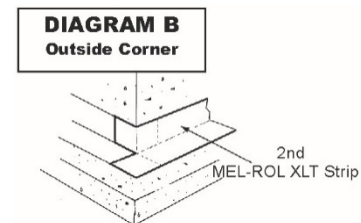
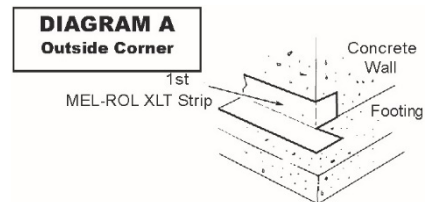
**Temperature ...** Apply in dry, fair weather when the air and surface temperatures are above -18° C. Do not apply to frost-covered concrete.

**Surface Conditioning ...** Apply MEL-PRIME adhesive to surfaces that will be covered within one working day. If left exposed overnight, additional adhesive must be applied. Follow all instructions and precautions on containers.

REMOVE release paper from MEL-ROL XLT from the top edge of the roll and firmly press exposed area to the wall. Remove the release paper from the rolls in a downward direction, pressing MEL-ROL XLT into place on the wall.

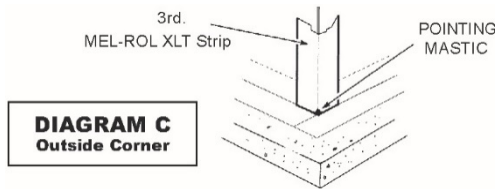
**Footing Details ...** Fill 90° interior angles with a cove of POINTING MASTIC. Once POINTING MASTIC is fully cured, install a strip of MEL-ROL XLT from W. R. MEADOWS horizontally along the wall where it meets the footing, placing half the material up the wall and the other half onto the footing. Extend the material 114.3 mm (4.5") beyond outside corners. Slit extended portion of MEL-ROL XLT strip lengthwise. Place the horizontal flap out onto the footing and bend the vertical flap around the wall. (See Diagram A.) Repeat this procedure in the opposite direction as shown in Diagram B.

MEL-ROL XLT can be applied to concrete, masonry surfaces, wood, insulated wall systems, and metal. All substrates must be clean, dry, and free of all surface irregularities.



**Horizontal Application ...** Remove release paper on edge, then position the MEL-ROL XLT membrane. Pull balance of release paper off, running the roll from low to high points, so all laps will shed water. Stagger end laps and overlap all seams at least 63.5 mm (2.5"). Apply a double-thickness of the MEL-ROL XLT membrane over construction, control, all expansion joints and over cracks greater than 1.59 mm (1/16") wide.

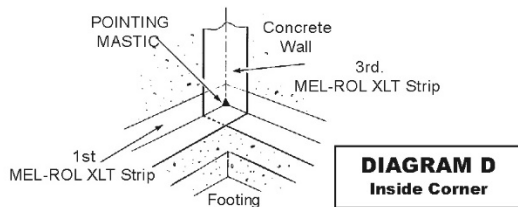
**Vertical Wall Application ...** Masonry walls may require the application of a cementitious parge-coat. Allow the parge-coat to dry before priming and applying MEL-ROL XLT. When applied, the parge-coat will produce a smooth, uniform, and well-bonded surface. Remove release paper, then apply vertically in lengths approximately 2.44 m (8') long over the top of the horizontal MEL-ROL XLT strip at the footing. Overlap seams at least 63.5 mm (2.5"). Tightly butt edges of membrane and apply POINTING MASTIC in corner applications. (See Diagram C.)



To the top terminations, apply POINTING MASTIC at least 3.18 mm (1/8") thick and 25.4 mm (1") wide. As an option, TERMINATION BAR may be used to mechanically fasten the membrane.

**Hand-Rub and Roll Press ...** Once positioned, immediately hand-rub the MEL-ROL XLT membrane firmly to the surface, removing any bubbles or wrinkles, then pressure roll the complete surface to assure positive adhesion.

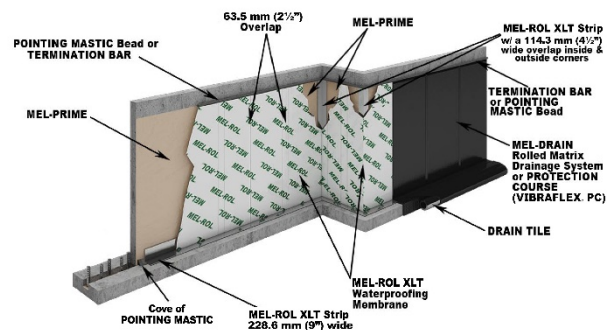
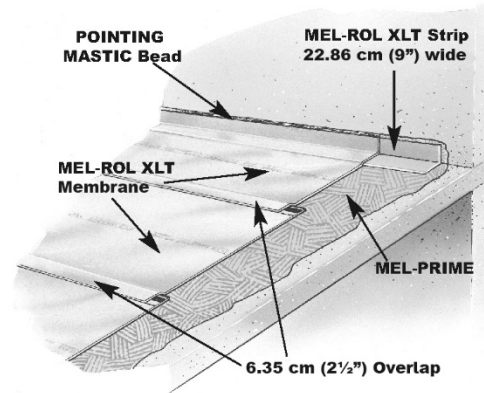
**Inside Corners ...** Before MEL-ROL XLT is applied, place a vertical MEL-ROL XLT strip on inside corners extending the material 114.3 mm (4.5") beyond each side of the corner. (See Diagram D.) Terminate at the footing and finish the corner with POINTING MASTIC.



**Outside Corners ...** Bend a MEL-ROL XLT strip vertically over the outside corner and extend 114.3 mm (4.5") beyond each side of the corner. Terminate the material at the footing. Finish the corner with POINTING MASTIC. (See Diagram C.)

**Drains and Protrusions ...** All protrusions should be sealed with two layers of membrane applied at least 152.4 mm (6") in all directions. Seal all terminations with POINTING MASTIC. Around drains, apply two layers of MEL-ROL XLT and put a bead of POINTING MASTIC between the membrane and clamping rings and at all terminations, drains, and protrusions. See ASTM D5898.

**Inspect and Repair ...** A thorough inspection should be made before covering and all necessary repairs made immediately. Tears and inadequate overlaps should be covered with MEL-ROL XLT membrane ... slit fish mouths and patch. Seal edges of all patches with POINTING MASTIC. Where applicable, horizontal applications can be flood-tested for 24 hours. All leaks should be marked and repaired when membrane dries.



**Protect the Membrane ...** on all vertical and horizontal installations with the immediate application of PROTECTION COURSE (VIBRAFLEX PC) if no drainage system is used, or MEL-DRAIN. To secure PROTECTION COURSE (VIBRAFLEX PC), use POINTING MASTIC as an adhesive, and/or physically attach at the top edge using TERMINATION BAR. Backfilling should be done immediately, using care and caution to avoid damaging the waterproofing application.

**PRECAUTIONS**

Avoid the use of products that contain tars, solvents, pitches, polysulfide polymers, or PVC materials that may come into contact with MEL-ROL XLT. The use of MEL-ROL XLT does not negate the need for relief of hydrostatic heads. A complete drain tile system should be placed around the exterior of footing and under slabs, as required. When using POINTING MASTIC as a footing cove, ensure that product is fully cured before being covered with MEL-ROL.

© is a registered trade mark of W. R. Meadows  
**WARRANTY:** W. R. Meadows of Canada warrants that, at the time and place we make shipment, our materials will be of good quality and will conform with our published specifications in force on the date of acceptance of the order. THE FOREGOING WARRANTY SHALL BE EXCLUSIVE AND IN LIEU OF ANY OTHER WARRANTY, EXPRESS OR IMPLIED, INCLUDING THE IMPLIED WARRANTIES OF MERCHANTABILITY AND FITNESS FOR A PARTICULAR PURPOSE AND ALL OTHER WARRANTIES OTHERWISE ARISING BY OPERATION OF LAW, COURSE OF DEALING, CUSTOM OF TRADE OR OTHERWISE. As the exclusive remedy for breach of this Warranty, we will replace defective materials, provided, however, that the buyer examine the materials when received and promptly notify us in writing of any defect before the materials are used or incorporated into a structure. Three (3) months after W. R. Meadows of Canada has shipped the materials, all our Warranty and other duties with respect to the quality of the materials delivered shall conclusively be presumed to have been satisfied, all liability therefore terminates and no action for breach of any such duties may thereafter be commenced. W. R. Meadows of Canada shall in no event be liable for consequential damages. Unless otherwise agreed to in writing, no warranty is made with respect to materials not manufactured by W. R. Meadows of Canada. We cannot warrant or in any way guarantee any particular method of use or application or the performance of materials under any particular condition. Neither this Warranty nor our liability may be extended or amended by our salesmen, distributors or representatives, or by our distributor's representatives, or by any sales information or drawings.

## ACCESSORIES

**MEL-PRIME** ... This solvent-based adhesive is for use at temperatures of -18° C and above for maximum adhesion. Apply by roller.

COVERAGE: 6.14 - 8.59 m<sup>2</sup>/L  
(250 - 350 ft.<sup>2</sup> per U.S. Gal.)  
PACKAGING: 18.93 L Pails

**POINTING MASTIC** ... Used as an adhesive and for sealing top edge terminations on MEL-ROL XLT, and to adhere PROTECTION COURSE (VIBRAFLEX PC).

COVERAGE: 3.18 mm x 25.4 mm x 16.10 mL  
(1/8" x 1" x 200'/U.S. gal)  
PACKAGING: 18.93 L Pails  
857.65 mL (29 Oz.) Cartridges (12 per Carton)

**PROTECTION COURSE (VIBRAFLEX PC)** ... Use for vertical and horizontal applications. Adhere with POINTING MASTIC or use mechanical fasteners.

PACKAGING: 1.22 x 2.44 m Panels

**MEL-DRAIN** ... is a dimple-raised moulded polystyrene fabric designed to provide high flow capacity to reduce hydrostatic pressure build-up around waterproofing and vapourproofing membranes. Choice of drain types are available for vertical, horizontal, and site applications. Use MEL-PRIME to condition surface prior to application of MEL-DRAIN.

**TERMINATION BAR** ... is a high strength, pre-formed, multi-purpose, plastic strip designed to support vertical membrane systems and PROTECTION COURSE (VIBRAFLEX PC) at their termination point.

PACKAGING: 3.04 m (10') [holes every 150 mm (6") o/c, 50.8 (2") mm from either end], 25 Pieces per Carton

## MAINTAIN ENERGY EFFICIENCY

Wet insulating materials lose much of their "R" factor performance characteristics, reducing the energy efficiency of the structure. W. R. MEADOWS thermal and moisture protection products play a key role in *maintaining* the structure's energy efficiency and aiding in the integrity of other structural systems, such as insulation.

## LEED INFORMATION

May help contribute to LEED credits:

- EAp2: Minimum Energy Performance
- EAc2: Optimize Energy Performance
- MRc9: Construction and Demolition Waste Management

## MASTERFORMAT NUMBER AND TITLE

07 13 26 – Self-Adhering Sheet Waterproofing

For CAD details, most recent data sheet, further LEED information, and SDS, visit [www.wrmeadows.com](http://www.wrmeadows.com).