



MasterFormat: 07 10 00

SEPTEMBER 2014
(Supersedes July 2011)

MEL-DRAIN™ TOTAL-DRAIN™

Prefabricated Soil Drain System

DESCRIPTION

The MEL-DRAIN TOTAL-DRAIN sheet drain system combines any regular MEL-DRAIN sheet drain section with the unique TOTAL-DRAIN section. In the TOTAL-DRAIN system, the regular sheet drain performs its normal function of water collection, while the TOTAL-DRAIN section provides both water collection and a high-profile section for water flow to the designed drainage exits. TOTAL-DRAIN is a two-part, prefabricated geocomposite drain consisting of a formed 24" high HIPS core covered on one side with a non-woven, needle-punched polypropylene filter fabric. The top section is 12" of 7/16" core for water collection. The bottom section is 12" of 1" thick for water collection and horizontal water flow to designated exits. The fabric allows water to pass into the drain core while restricting the movement of soil particles, which might clog the core. The core allows the water to flow to designated drainage exits. Full-coverage protection is provided to waterproofing materials.

USES

TOTAL-DRAIN works with any MEL-DRAIN drainage product.

FEATURES/BENEFITS

- The high-profile flow section has a larger open area than does perforated pipe to accept high flows from the sheet drain and from the surrounding soil.
- The TOTAL-DRAIN section, with its manufactured transition between sheet drain and high-profile section, provides a secure flow path, which is not dependent on field installation.
- The system is fast and easy to install. Eliminates select backfill required to give perforated pipe strength. Standard connectors and corner guards are available.

MEL-DRAIN TOTAL-DRAIN

Section Properties

Flow Capacity

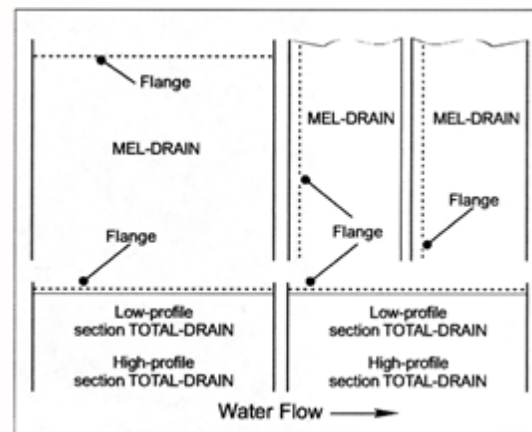
Sheet Drain, gpm/ft. of width 21 @ HG = 0.1

ASTM D 4716	
High Profile, gpm	100 @ HG =
ASTM D 4716	9,000
Compressive Strength, lb./sf	
ASTM D 1621	50
Roll Length, ft.	
Roll Width, ft.	2
Roll Weight, lb.	30

MEL-DRAIN Rolled Matrix Drainage Installation Instructions Using TOTALDRAIN or Pipe

REQUIRED MATERIALS

- 2' x 50' rolls of TOTAL-DRAIN sheet drain
- 4' x 50' rolls of MEL-DRAIN rolled matrix drainage, if full wall drainage is required
- TOTAL-DRAIN sheet drain corner guards
- 4" (101.6 mm) wide PERMINATOR TAPE from W. R. MEADOWS.
- Attachment materials (see below)
- Knife or scissors, rubber hammer



DRAIN ATTACHMENT METHODS

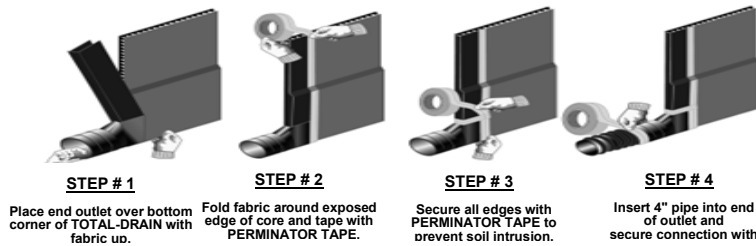
For attaching drain to waterproofing material, concrete, or wood, several methods may be used, including metal stick pins, nails driven through washers or wood lagging,

CONTINUED ON THE REVERSE SIDE...

W. R. MEADOWS, INC.

P.O. Box 338 • HAMPSHIRE, IL 60140-0338
Phone: 847/214-2100 • Fax: 847/683-4544
1-800-342-5976
www.wrmeadows.com • info@wrmeadows.com

HAMPSHIRE, IL / CARTERSVILLE, GA / YORK, PA
FORT WORTH, TX / BENICIA, CA / POMONA, CA
GOODYEAR, AZ / MILTON, ON / SHERWOOD PARK, AB



construction adhesives, or double-sided tape. Discuss material compatibility with waterproofing supplier before using adhesive. Typically, any method used for attaching waterproofing protection board will work for drain. For attaching drain to bare earth, 4 - 8" anchor pins with washers work well.

Clean Wall/Waterproof/Insulate

Clean wall and apply waterproofing or insulation if required.

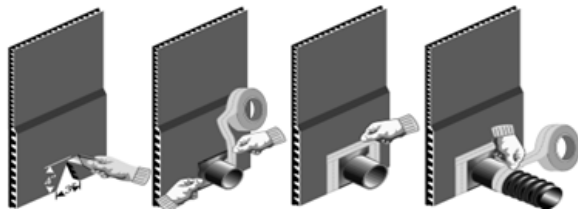
Installing First Row ... If not using MEL-DRAIN rolled matrix drainage for full water coverage, close the top end of the drain to prevent soil intrusion by folding the fabric behind the drain. Close the high-profile section with PERMINATOR TAPE.

Going Around Corners ... Bend drain to make inside corners. For outside corners, cut the low-profile core flush with corner and tape edges. Slit fabric on high-profile section, bend around corner, and place corner guard with fabric over slit of high-profile drain. Secure with PERMINATOR TAPE.

Installing Next Roll of TOTAL-DRAIN ... To attach the next roll of TOTAL-DRAIN drain, cut one row of low-profile dimples from each end of the two sections to be joined. Do not cut fabric. Interlock one row of the high-profile section and secure connection. Overlap fabric and apply PERMINATOR TAPE top to bottom of joint to prevent soil intrusion.

Connecting MEL-DRAIN Rolled Matrix Drainage to TOTAL-DRAIN ...

If full wall drainage is required, attach MEL-DRAIN rolled matrix drainage above TOTAL-DRAIN sheet drain. MEL-DRAIN rolled matrix drainage may be installed either horizontally or vertically. When installed vertically, the edge of the core with flange should be facing direction opposite of TOTAL-DRAIN water flow. Fold back fabric at top of TOTAL-DRAIN and rest (or shingle) MEL-DRAIN rolled matrix drainage on top of TOTAL-DRAIN core flange. Cover fabric seam (facing down) and secure with PERMINATOR TAPE.



STEP # 1 Use razor knife and cut a notch in bottom portion of the TOTAL-DRAIN approximately 3 inches wide at the bottom and 4 inches high and discard

STEP # 2 Insert fitting over notch and tape bottom of the TOTAL-DRAIN with fabric up.

STEP # 3 Make sure all edges of fitting are covered with tape fabric up.

STEP # 4 Insert pipe into fitting and secure with tape.

LEED INFORMATION

- May help contribute to LEED credits:
- EA Credit 1: Optimize Energy Performance
 - IEQ Credit 3.1: Construction Indoor Air Quality Management Plan – During Construction
 - IEQ Credit 7.1: Thermal Comfort – Design
 - MR Credit 2: Construction Waste Management
 - MR Credit 4: Recycled Content
 - MR Credit 5: Regional Materials
 - SS Credit 6.1: Storm Water Design: Quantity Control
 - SS Credit 6.2: Storm Water Design: Quality Control
 - WE Credit 1: Water-Efficient Landscaping
 - WE Credit 2: Innovative Wastewater Technologies



LIMITED WARRANTY

W. R. MEADOWS, INC. warrants at the time and place we make shipment, our material will be of good quality and will conform with our published specifications in force on the date of acceptance of the order. Read complete warranty. Copy furnished upon request.

Disclaimer

The information contained herein is included for illustrative purposes only, and to the best of our knowledge, is accurate and reliable. W. R. MEADOWS, INC. cannot however under any circumstances make any guarantee of results or assume any obligation or liability in connection with the use of this information. As W. R. MEADOWS, INC. has no control

over the use to which others may put its product, it is recommended that the products be tested to determine if suitable for specific application and/or our information is valid in a particular circumstance. Responsibility remains with the architect or engineer, contractor and owner for the design, application and proper installation of each product. Specifier and user shall determine the suitability of products for specific application and assume all responsibilities in connection therewith.