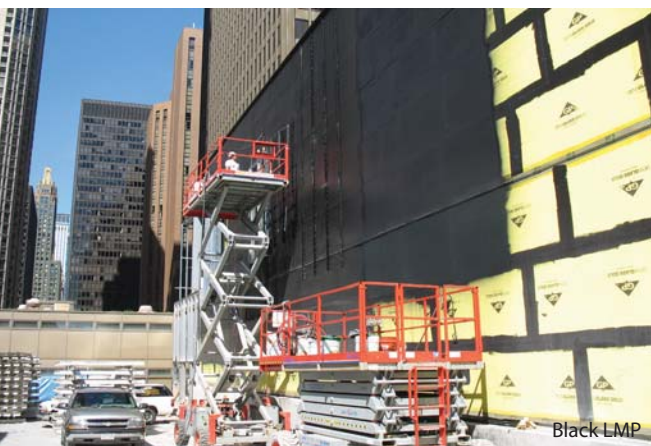


AIR-SHIELD™ LMP

Fluid-Applied, Vapor Permeable
Air and Moisture Barrier



Black LMP



Standard Gray LMP

AIR-SHIELD LMP has been specifically formulated to act as an air and liquid moisture barrier, allowing vapor to pass through it.

It may be applied to most common surfaces and integrated into various wall systems. **AIR-SHIELD LMP** is suitable for both new construction and retrofit applications.



W. R. MEADOWS, INC.

P.O. Box 338 • Hampshire, IL 60140-0338
Phone: 847/214-2100 • Fax: 847/683-4544
1-800-342-5976

www.wrmeadows.com • info@wrmeadows.com

HAMPSHIRE, IL / CARTERSVILLE, GA / YORK, PA
FORT WORTH, TX / BENICIA, CA / POMONA, CA
GOODYEAR, AZ / MILTON, ON / SHERWOOD PARK, AB



AIR-SHIELD LMP is a water-based air/liquid moisture barrier that cures to form a tough, seamless, elastomeric membrane. AIR-SHIELD LMP exhibits excellent resistance to air leakage. When properly applied as a drainage plane, AIR-SHIELD LMP prohibits liquid water intrusion into the substrate.

AIR-SHIELD LMP features and benefits include:

- Meets ASTM E 84, Class A Standard Test Method for Surface Burning Characteristics of Building Materials.
- May be used in NFPA 285 complying wall assemblies. Contact W. R. MEADOWS for further information.
- Highly flexible – bridges cracks, which may form in the substrate.
- UV resistant – gray membrane can be left exposed up to six months. Black membrane can be exposed for an indefinite period and is ideal for exposed applications, such as beneath rain screen panels.
- User friendly – single-component, water-based technology allows for simple, safe application and easy cleanup.
- Liquid applied – simplifies detailing and assures a monolithic, seamless membrane when applied to a rough or smooth surface.
- Sprayable – with appropriately configured airless spray equipment – low application costs.
- Excellent adhesion – remains firmly bonded to the substrate, even when applied over damp surfaces.
- Self-sealing – Nails and fasteners can be used without compromising performance.
- Complies with federal, state, and local maximum allowable VOC requirements, including National EPA VOC Emission Standard for Architectural Coatings, CARB, LADCO, and OTC Phase I and II.



W. R. MEADOWS

SEALTIGHT

A Family Company Since 1926
QUALITY...SERVICE...INTEGRITY

For more information, samples or literature,
visit www.wrmeadows.com or call 1-800-342-5976.