



Treat Rough Openings with W. R. MEADOWS' Flashing Products



AIR-SHIELD... THRU-WALL FLASHING - Flexible Flashing

- nominally 40-mils thick
- roll-type, self-adhering
- air, vapor, liquid barrier
- **masonry concrete, wood/steel frames, roofing applications, door and window lintels, sills, spandrel beams, caps, parapets**
- low temperature version available



AIR-SHIELD 25 MIL FLASHING TAPE - 25-Mil Flexible Flashing

- nominally 25-mils thick
- roll-type, self-adhering
- air, vapor, liquid barrier
- window and door openings, deck-to-wall intersections, corner boards, wall-to wall tie-ins, foundation sill plates, sheathing panel seams, under **stucco finishes, masonry walls**
- non-roof detail areas



AIR-SHIELD ALUMINUM FLASHING - Aluminum-Faced Flashing

- nominally 40-mils thick
- roll-type, self-adhering
- air, vapor, liquid barrier
- aluminum facer for extended UV exposure
- window and door openings, deck-to-wall intersections, corner boards, wall-to wall tie-ins, foundation sill plates, sheathing panel seams, under **stucco finishes, masonry walls**
- non-roof detail areas



AIR-SHIELD BUTYL FLASHING - Transition and Detail Membrane

- nominally 14.5-mils thick
- designed to be applied without primer or adhesive to ordinary concrete, steel, copper, stainless and galvanized steel, untreated wood, insulated concrete forms (ICFs), extruded insulation board, and exterior-grade **fiberglass mat gypsum board sheathing**
- extreme cold applications acceptable – down to 10° F (-12° C)
- air, vapor, and liquid moisture barrier



AIR-SHIELD LIQUID FLASHING - Liquid Flashing Membrane

- gun grade
- liquid applied
- **flashing and detailing membrane**
- can be applied in damp conditions
- non-sag
- paintable
- bonds to most construction materials including exterior gypsum board



Flashing Product Accessories



BEM - **One-Component Waterproofing Membrane**

- cold-applied
- non-slump
- elastomeric
- forms fillets and reinforces corners
- waterproofing and sealing material
- bonds to asphalt and concrete



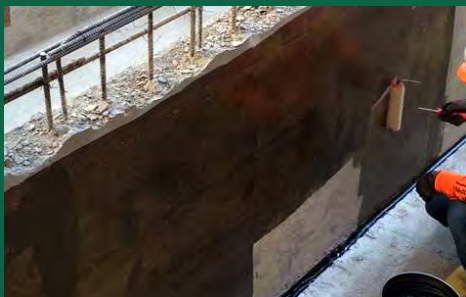
POINTING MASTIC - **Polymeric Sealing Compound**

- cold-applied
- single-component
- polymeric
- seals exterior, vertical, and horizontal membrane terminations
- can be used as an adhesive bonding
- can be used on all patches and overlaps in detail areas
- bonds to structural concrete, masonry, and wood



MEL-PRIME™ - **Solvent-Based VOC Adhesive**

- conditions and prepares surfaces
- provides a durable, strong adhesion
- dustproofs
- red to reddish-brown in color
- new and existing surfaces
- vertical and horizontal applications



MEL-PRIME W/B - **Water-Based Adhesive**

- conditions and prepares surfaces
- provides a durable, strong adhesion
- dustproofs
- dark brown color turns to full black after curing
- new and existing surfaces
- vertical and horizontal applications

MEL-PRIME N.E. - **Adhesive for use in the Northeast**



W. R. MEADOWS, INC.

P.O. Box 338 • Hampshire, IL 60140-0338
Phone: 847/214-2100 • Fax: 847/683-4544
1-800-342-5976

www.wrmeadows.com • info@wrmeadows.com

HAMPSHIRE, IL / CARTERSVILLE, GA / YORK, PA
FORT WORTH, TX / BENICIA, CA / POMONA, CA
GOODYEAR, AZ / MILTON, ON / SHERWOOD PARK, AB