

W. R. MEADOWS®

SEALTIGHT®

# MULTI-FAMILY HOUSING

Protect Your Investment with W. R. MEADOWS



Guardian of the Structure



[wrmeadows.com](http://wrmeadows.com)

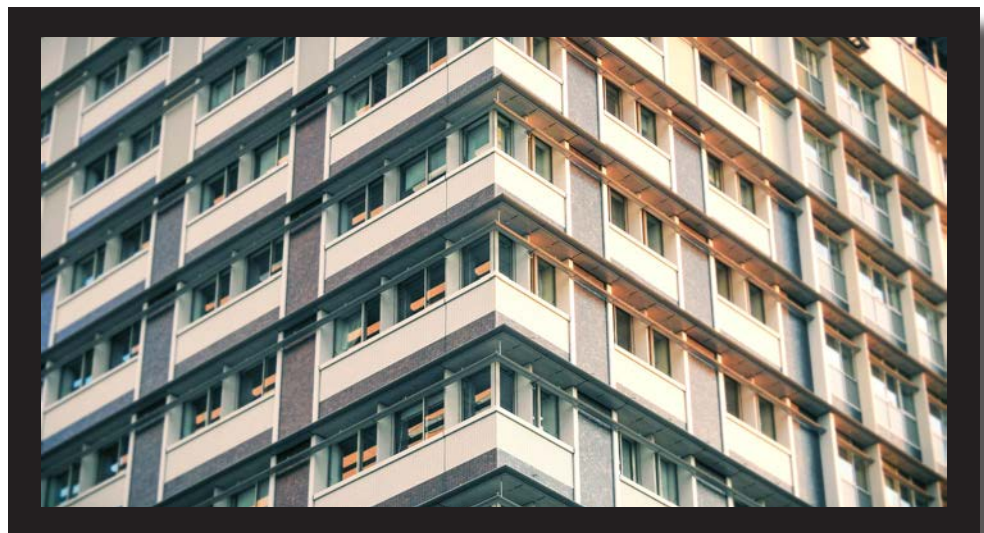




# What is Multi-Family Housing?

Multi-family housing is one of the most common dwelling options available that allows for multiple separate housing units to be contained within one building or multiple buildings in one complex. These structures can range from small apartment complexes to multi-story student housing buildings or skyscrapers that can house thousands of tenants. With the wide-range of economical residential options multi-family housing offers, demand for these housing developments continue to be on the rise.

It is more important than ever to have the best quality construction products in the market on these large-scale projects to ensure your concrete structures stay as strong and beautiful as possible. **W. R. MEADOWS** offers a complete suite of products that are designed to help protect and strengthen your concrete investment. Our product lines include below grade waterproofing, podium and amenity deck protection, planter waterproofing, balcony waterproofing, air-barriers, and more to protect your building from the ground up. Think of us as your guardian of the structure.



## Below-Grade Waterproofing

**W. R. MEADOWS** offers a wide range of products that are suited to fit the needs of any contractor, architect, engineer, or anyone involved in the building process looking to waterproof below grade multi-family project sites. Our products include **PRECON**, **MEL-ROL**, **MEL-ROL LM**, and **CLAY-TITE**. These products include sheet-applied and liquid-applied waterproofing options that are available to tackle any below-grade waterproofing challenge. **PRECON** and **CLAY-TITE** are used before the concrete is poured, while **MEL-ROL** and **MEL-ROL LM** are applied to pre-existing walls to waterproof.

### PRECON<sup>®</sup>

**PRECON** pre-applied/underslab/blindside waterproofing membrane is a composite sheet membrane comprised of a non-woven fabric, elastomeric membrane, and **W. R. MEADOWS'** exclusive, patented plasmatic core with seven-layer matrix designed for toughness and providing the lowest water transmission rating on the market.



### MEL-ROL<sup>®</sup>

**MEL-ROL** self-adhering waterproofing membrane is a flexible, versatile, dependable, bituminous, roll-type waterproofing membrane. It is composed of a nominally 56 mil thick layer of polymeric waterproofing and offers a handy overlap guideline to assure proper overlap coverage and to assist in maintaining a straight application.



### MEL-ROL LM<sup>™</sup>

**MEL-ROL LM** is a single-component, polymer-modified, cold-applied, water-based, liquid waterproofing membrane ideal for below-grade vertical seamless waterproofing applications. It offers the same high-quality rubber polymers found in traditional peel-and-stick **MEL-ROL** in a heavy-bodied, high solids, quick drying liquid membrane.



### CLAY-TITE<sup>™</sup>

**CLAY-TITE** is a dual-layer waterproofing membrane consisting of virgin HDPE (20 mil), sodium bentonite, and a protective layer consisting of a non-woven polypropylene. The HDPE provides the first layer of waterproofing, while the bentonite's self-sealing capabilities ensure positive puncture protection under hydrostatic conditions.





## Podium & Amenity Decks

**W. R. MEADOWS** recommends cold-applied **HYDRALASTIC 836** or hot-applied **HRM-714** monolithic waterproofing options for podium and amenity decks. Both products are formulated to provide a tough membrane to take the worry out of waterproofing.

## Planters

Concrete planters have become very popular in today's multi-family apartment and housing developments. They are relatively inexpensive while offering great aesthetic value. However, when the concrete is not properly treated, it is susceptible to cracking, eroding, and bacteria growth. Applying a waterproofing compound can improve the performance and durability of your concrete. **W. R. MEADOWS'** recommends waterproofing planters with **HYDRALASTIC 836**.

## HYDRALASTIC 836

**HYDRALASTIC 836** cold-applied, single-component, solvent-free waterproofing compound will not shrink, has a low VOC content, and has a very low odor. It will not crack in extreme cold or slump due to softening in high temperatures.



## HRM 714

**HRM 714** hot-applied rubberized asphalt waterproofing membrane is a 100% solids blend of asphalts, synthetic rubber polymers, and filler formulated to provide toughness with flexibility and very low absorption and moisture vapor permeance.



## Balconies

W. R. MEADOWS's waterproofing products that are most suited for balconies are **HYDRALASTIC 836**, **MEL-ROL**, and **HYDRASTOP SBW**. **HYDRALASTIC 836** is a great vertical and horizontal liquid-applied waterproofing product that is relatively easy to apply. **MEL-ROL** offers a sheet applied waterproofing option that can be applied horizontally and vertically. **HYDRASTOP SBW** is used as a pre-applied waterproofing membrane specifically designed for horizontal suspended balcony slabs that will receive a concrete topping.

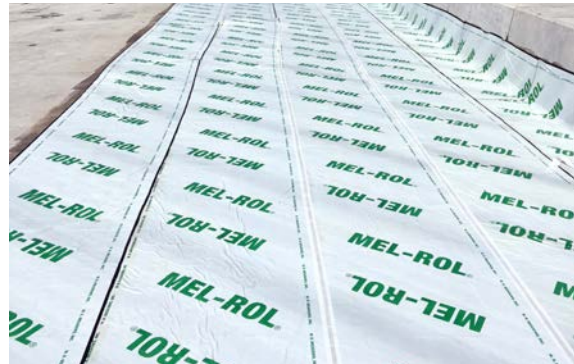
### HYDRALASTIC 836

**HYDRALASTIC 836** cold-applied, single-component, solvent-free waterproofing compound offers a monolithic waterproofing option for both horizontal and vertical components of suspended concrete, asphalt, metal, or wood balcony surfaces. **HYDRALASTIC 836** is ideal for positive-side waterproofing applications.



### MEL-ROL

**MEL-ROL** self-adhering waterproofing membrane offers a roll-type option to assure the proper membrane thickness remains consistent throughout installation. This cost-effective, positive waterproofing system is quick and easy to apply for maximum productivity. Special membrane-to-membrane adhesion provides overlap security.



### HYDRASTOP SBW

**HYDRASTOP SBW** suspended balcony waterproofing membrane is a self-adhering sheet membrane comprised of a non-woven fabric, elastomeric membrane, and coated release paper designed to form a mechanical bond against concrete once it cures.





## Air Barriers

W. R. MEADOWS offers an extensive line of air barriers to control air leakage through the building envelope to maintain a high standard of performance of the building materials within the wall assembly. Our **AIR-SHIELD** line of air barriers include liquid applied, sheet applied, and vapor permeable options.

### AIR-SHIELD™

**AIR-SHIELD** is a self-adhering air/vapor and liquid moisture barrier.



## AIR-SHIELD™ ALUMINUM SHEET MEMBRANE

**AIR-SHIELD ALUMINUM SHEET MEMBRANE** is a self-adhering air/vapor and liquid barrier.



### AIR-SHIELD™ SMP

**AIR-SHIELD SMP** is a sheet membrane vapor permeable air barrier.



### AIR-SHIELD™ LM

**AIR-SHIELD LM** offers a liquid membrane air/vapor and liquid moisture barrier.



### AIR-SHIELD™ LSR

**AIR-SHIELD LSR** is a liquid synthetic rubber air/vapor and liquid moisture barrier.



### AIR-SHIELD™ TMP

**AIR-SHIELD TMP** is a liquid membrane thin film permeable air barrier.



### AIR-SHIELD™ LMP

**AIR-SHIELD LMP** offers a liquid membrane vapor permeable air barrier.



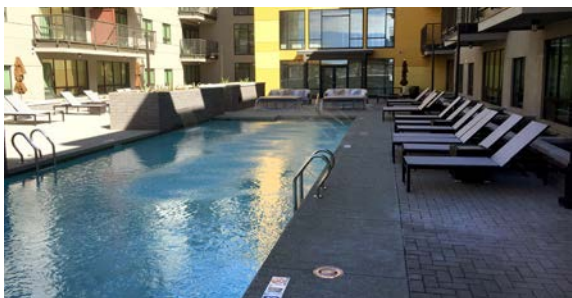
**Minnesota Veterans Home Building 22 - Minneapolis, MN, USA - 73,000 sq. ft.**

73,000 square feet of **AIR-SHIELD LMP**, over 11,000 linear feet of **AIR-SHIELD THRU-WALL FLASHING**, and large quantities of **BEM** and **MEL-PRIME W/B** were installed on the Minnesota Veterans Home Building 22. This project was installed by an Air Barrier Association of America trained installer and is part of the ABAA's quality assurance program.



**Illuminate Apartments - Phoenix, AZ, USA - 30,000 sq. ft.**

This project utilized **W. R. MEADOWS' HYDRALASTIC 836**, **BEM**, **MEL-DRAIN 9005-B**, and **REINFORCING FABRIC HCR** to help achieve a LEED Silver project certification. Waterproofing materials were applied for podiums and planters.



**Saginaw 2 Apartments - Cambridge, ON, Canada - 18,000 sq. ft.**

The Saginaw 2 Apartment building located in Cambridge, Ontario, utilized **W. R. MEADOWS' HYDRALASTIC 836**, **MEL-DRAIN 7055**, and **REINFORCING FABRIC HCR** to waterproof 18,000 square feet of concrete.



**University of Missouri South Housing - Columbia, MO, USA - 80,000 sq. ft.**

The University of Missouri selected **AIR-SHIELD TMP**, **AIR-SHIELD THRU-WALL FLASHING**, and **AIR-SHIELD LIQUID FLASHING** from **W. R. MEADOWS** to waterproof 80,000 square feet of their South Housing building.





W. R. MEADOWS®

SEALTIGHT®

Guardian of the Structure



#wrmeadows

**W. R. MEADOWS, INC.**

P.O. Box 338 • Hampshire, IL 60140-0338  
Phone: 847/214-2100 • Fax: 847/683-4544  
1-800-342-5976

[www.wrmeadows.com](http://www.wrmeadows.com) • [info@wrmeadows.com](mailto:info@wrmeadows.com)

HAMPSHIRE, IL / CARTERSVILLE, GA / YORK, PA  
FORT WORTH, TX / BENICIA, CA / POMONA, CA  
GOODYEAR, AZ / MILTON, ON / SHERWOOD PARK, AB