

TILT-UP CONSTRUCTION





The Next Leader of Tilt-Up Construction Supplies!

Welcome to **W. R. MEADOWS**, where innovation meets versatility to give you a true one-stop shop solution for all your construction needs. With a steadfast commitment to excellence, we provide an extensive range of high-quality products across various categories, catering to the ever-evolving demands of the tilt-up construction industry. Our cutting-edge solutions are meticulously designed to streamline your project workflows, boost durability and performance of your structures, and elevate their aesthetic appeal. At W.R. MEADOWS, we understand the complexities of modern construction and strive to be your reliable partner, delivering tailored products and services that seamlessly integrate into your projects, ensuring success from start to finish.

Committed to Environmental Sustainability

At W. R. MEADOWS, we believe in responsible construction practices that uphold our commitment to environmental sustainability. Many of our products are low VOC, designed to reduce their environmental impact without compromising on their performance. By choosing W. R. MEADOWS, you're not only choosing high-quality construction solutions; you're also choosing to build sustainably and responsibly.

- Proactive in adopting environmentally friendly practices
- Range of low VOC products for greener construction
- Ensuring performance while minimizing environmental impact

One-Stop Shop for All Your Construction Needs

Why juggle multiple suppliers when W. R. MEADOWS can cater to all your construction needs? We offer an extensive range of products, from construction liquids to building envelope to concrete restoration and more. Unlike our competitors, we provide start-to-finish solutions, simplifying your supply chain and streamlining your construction process. With nearly a century of proven expertise, and a focus on tilt-up since 1977, we understand modern construction's complexities and stand beside you from start-to-finish of your project. Choose W. R. MEADOWS for a hassle-free construction experience that provides support whenever you need it!

- Wide range of high-quality construction products
- Single source for all construction needs
- Streamlined supply chain for an efficient construction process
- Dedicated technical, installation and setup, maintenance, application, and support staff
- Zero downtime and Turn-key solutions

Discover the W.R. MEADOWS difference today and let us help you build a brighter, more sustainable future.



TILT-CRETE™ W/B

Water-Based Cure & Bond Breaker

One trusted name – Choose W. R. MEADOWS



When panel appearance and schedule certainty are non-negotiable, TILT-CRETE W/B gives you reliable water-based technology without forcing you to learn a new application routine. The product cures the slab, lays down a dependable bond-break layer, and lifts panels cleanly—while delivering consistent performance across site conditions.

TILT-CRETE W/B – Water-Based, Ultra-Low VOC

If your project sits in a strict emissions zone—or you simply want the greenest option available—reach for TILT-CRETE W/B. Its proprietary aqueous dispersion cures and bond-breaks in one pass, leaving panels stain-free and coating-ready. Crews mix once, spray, and move on; no continuous agitation is necessary, and the dry film stands up to UV, rain, and morning dew. With VOC content under 5 g/L, TILT-CRETE W/B helps you meet today's toughest air-quality regs while keeping production on track.



TILT-CRETE W/B combines curing and bond-breaking, resists weather once dry, and requires nothing more than a single pre-application stir. It arrives in 5-gal (18.9 L) pails or 55-gal (208 L) drums, making it easy to stay productive without retraining crews or swapping equipment.



Choose **TILT-CRETE W/B** for VOC-restricted zones, interior work, or jobs prioritizing green credentials.

CURING COMPOUNDS

Panel-Grade Curing Compounds - Lock in Strength Before the Lift

Tilt-up success starts long before the crane hooks on. W. R. MEADOWS curing compounds create a uniform, moisture-retaining film that lets concrete develop its full design strength—and do it fast enough to meet aggressive lift schedules. Applied to both the casting slab and the exposed face of each panel, these ASTM C309-compliant formulations minimize early-age shrinkage, curb crazing, and deliver a harder, more abrasion-resistant surface that stays true to architectural finishes. Spray and go: the fast-drying film stands up to job-site traffic, won't dust or discolor, and leaves a coating-friendly surface once the panels are set. Choose W. R. MEADOWS curing compounds to lock in panel integrity, cut rework, and keep your tilt-up timeline on track.



CRISTALLUM - Premium, Clear, Water-Based Concrete Curing Compound

CRISTALLUM is the go-to choice when the look of freshly placed concrete matters as much as its long-term performance. The water-based formula sprays on clear, forms a high-retention membrane that locks in moisture, and then dissipates naturally as the slab reaches design strength—leaving behind a clean, coating-ready surface with no discoloration. Ideal for high-end tilt-up panels or architectural precast, CRISTALLUM helps deliver hard, dense concrete while protecting the visual finish during the critical cure period.

1100 – Resin-Based, Water Emulsion Concrete Curing Compound

1100 pairs the water-retention power of hydrocarbon resins with the ease of a true water emulsion. Spray it on any concrete surface—interior or exterior, vertical or horizontal—and it quickly forms a premium membrane that locks in moisture for full cement hydration, reducing shrinkage, crazing, and dusting. After about four weeks of UV exposure, the film naturally dissipates, leaving a clean surface ideal for tile, coatings, or resilient flooring. Ready to use straight from the pail, 1100 delivers dependable curing performance without the mess, odor, or VOC concerns of solvent-based products.



VOCOMP® Series – Water-Based Acrylic Curing & Sealing Compounds (VOCOMP-20, VOCOMP-25, VOCOMP-30)

The VOCOMP line cures, seals, and dust-protects in a single step, letting you choose the film build and sheen that best matches project needs. VOCOMP-20 lays down a light, breathable coating that dries clear for a natural appearance while still providing moisture retention and UV stability. VOCOMP-25 ups the solids to deliver a medium-to-high sheen, enhancing color and offering extra resistance to chemicals, petroleum, and abrasion—ideal for driveways, pool decks, or retail floors. For fresh concrete that demands a thicker, more protective film, VOCOMP-30 (30 % solids) supplies the premium barrier needed to lock out de-icing salts, cleaning agents, and daily traffic. All three share the same non-yellowing, water-based technology, quick dry times, and soap-and-water cleanup—making them versatile, VOC-compliant answers for tilt-up panels, slabs-on-grade, and architectural concrete alike.



HARDENERS & DENSIFIERS

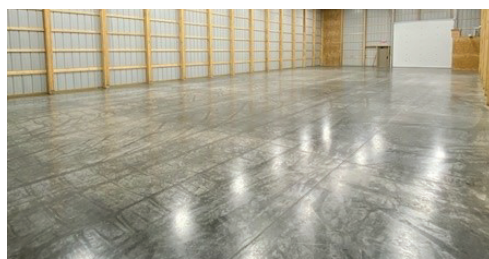
Panel-Grade Hardeners & Densifiers - Durability Cast into Every Lift

When your casting slab doubles as both the work platform and the finished interior floor, strength can't be an afterthought. W. R. MEADOWS liquid hardeners and densifiers penetrate deep into fresh or ground concrete, chemically bonding with free lime to create a harder, denser surface that shrugs off abrasion, tire traffic, and job-site abuse. The result is a casting bed that stays flat and dust-free through every panel pour, then delivers a low-maintenance, polished appearance once construction wraps. In many cases, these products can also be applied to the exposed face of tilt-up panels, enhancing long-term weather and stain resistance without altering architectural finishes. Better durability, faster turnarounds, and the potential for LEED credits - build it all into your tilt-up projects with W. R. MEADOWS hardeners and densifiers.



LIQUID-HARD® - Concrete Densifier & Chemical Hardener

This ready-to-use, water-based silicate penetrates deeply, reacting with free lime to densify, harden, and dustproof casting slabs and panels. The resulting pore-filling matrix boosts abrasion, chemical, and moisture resistance while creating a polishable sheen. VOC-compliant and odor-free, LIQUI-HARD is ideal for high-traffic tilt-up floors that demand long-term durability.



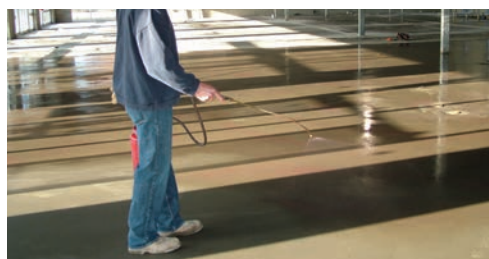
LIQUI-HARD ULTRA – Molecular Concrete Densifier & Chemical Hardener

A waterborne, lithium-silicate-based, ready-to-use, colorless liquid, which hardens and dustproofs concrete at a molecular level. After proper application, the finished surface offers substantial improvement in abrasion and chemical resistance and will significantly improve the durability of the surface when compared to untreated concrete. LIQUI-HARD ULTRA solidifies the concrete, eliminating dusting and pitting.



SIL-CRETE™ – Lithium-Silicate Curing Agent and Densifier

This low-solids lithium-silicate cures and densifies fresh troweled concrete in a single pass and can also tighten existing slabs. It leaves no film, won't yellow, peel, or inhibit later coatings, and meets ASTM C309 moisture-loss limits. Use SIL-CRETE to lock in strength on tilt-up casting surfaces while keeping future finish options open.



MED-CURE™ – Concrete Curing Agent, Hardener, and Dustproof

MED-CURE penetrates to cure, harden, and dustproof in one water-based application. It satisfies ASTM C309 on hard-troweled concrete, minimizes shrinkage cracking, and dries quickly to a low-maintenance finish that accepts tile, coatings, or resilient flooring. VOC-compliant and residue-free, it's a versatile choice for tilt-up slabs, sidewalks, and vertical elements.



BELLATRIX® – Primer Concrete Enhancer

Formulated with hybrid polymers and dual-protection chemistry, BELLATRIX adds a clear, high-gloss barrier that resists stains, chemicals, and moisture while allowing concrete to breathe. Ideal over LIQUI-HARD-treated or polished floors, it rejuvenates sealed surfaces and protects busy tilt-up facilities such as warehouses, retail spaces, and distribution centers—indoors or out, all with VOC compliance.

UNDERSLAB VAPOR BARRIERS

The Unseen Guardian of Your Tilt-Up Project



Moisture control starts before the first pour. W. R. MEADOWS underslab vapor barriers form a continuous, ultra-low-perm shield under the casting slab, blocking ground vapor that can curl floors, blister coatings, or stain tilt-up panels. Reinforced core scrim delivers exceptional puncture resistance yet stays flexible for quick detailing around footings and penetrations. Rolls unroll flat, resist rebar-chair abuse, and retain strength under the wheel loads of cranes and delivery trucks, so integrity isn't sacrificed during hectic slab prep. By locking out moisture, the barrier speeds curing, stabilizes slab dimensions, and protects interior finishes—often eliminating costly flooring mitigation down the road. Specify W. R. MEADOWS to anchor your tilt-up projects on a drier, healthier foundation.

PERMINATOR® – 10 and 15 Mil Underslab Vapor Barrier

A new generation of polyolefin-based resin/chemical technology. PERMINATOR provides the vapor barrier industry with a highly effective, economical choice for helping to reduce the penetration of moisture and water vapor through the slab into the structure, thereby helping to reduce fungus, mildew, and mold growth. PERMINATOR also helps reduce radon gas from entering the structure. New resin technology allows dramatically greater puncture resistance while maintaining one of the lowest perm ratings in the market.

PERMINATOR – 20 Mil Gas/Vapor Barrier

Delivers heavyweight underslab defense for high-risk jobsites. The extra-thick polyolefin membrane shrugs off punctures and construction traffic while maintaining an ultra-low perm rating to control moisture, methane, and radon. Supplied in 105' rolls, it overlaps 6" and tapes tight for a continuous barrier that secures sensitive flooring systems and crawlspace environments.

PERMINATOR EVOH – 20 Mil Underslab Gas Vapor Barrier

PERMINATOR EVOH is a seven-layer co-extruded barrier manufactured from state-of-the-art polyethylene and EVOH resins. Designed to provide superior resistance to gas and moisture transmission, PERMINATOR EVOH is a highly resilient underslab gas/vapor barrier designed to restrict naturally occurring gases, such as radon, methane, gasoline, solvents, oils, and hydrocarbons, from migrating through the ground and into the concrete slab.

PREMOULDED MEMBRANE® VAPOR SEAL WITH PLASMATIC CORE (PMPC)

A patented seven-ply, weather-coated, permanently bonded, semi-flexible vapor-proofing/ water-proofing membrane. It's composed of an exclusive PLASMATIC CORE suspended mid-point between two layers of a homogeneous, bituminous material and then sealed under heat and pressure between liners of asphalt-impregnated felt and a glass-mat liner. An asphalt weather coat is applied to the glass-mat liner and covered with a polyethylene anti-stick sheet.

WATER- PROOFING SYSTEMS

Shielding Your Structure, the Right Way

Boost the resilience of your concrete tilt-up construction projects with W. R. Meadows' waterproofing systems. Our comprehensive solutions are designed to tackle the challenges of moisture intrusion head-on, providing a superior level of protection for your structures. By creating an impermeable barrier, these systems not only prevent water damage but also combat the risk of mold and mildew, preserving the integrity of your structures for the long term. But their benefits go beyond just protection. Our waterproofing systems are easy to apply and fast-curing, ensuring an efficient construction process and reducing project timelines. Invest in W. R. Meadows' waterproofing systems and let your tilt-up constructions stand tall against the elements, radiating quality and durability.



ADI-CON® CW PLUS – Crystalline Waterproofing Admixture for Concrete

A dry, chloride-free powder admixture that permanently waterproofs concrete from the inside out. Reactive chemicals plug capillaries as cement hydrates, blocking water under hydrostatic pressure while boosting chemical resistance. Easy to dose with minimal set impact, it delivers economical, integral protection for tilt-up slabs and panels.



PRECON® – Pre-Applied/Underslab Waterproofing Membrane

A pre-applied composite membrane featuring our seven-layer PLASMATIC CORE for the industry's lowest vapor transmission. Installed blindside or underslab, it bonds mechanically to fresh concrete, forming a continuous barrier against water, methane, and radon. Durable fabric facer simplifies placement, ensuring watertight, vaporproof protection beneath tilt-up walls and slabs.



HYDRALASTIC™ 836 – Cold-Applied, Single-Component Waterproofing

A cold-applied, single-component liquid that cures to a seamless, flexible membrane with zero solvents or odor. It skins in 30 minutes, installs without mixing, and adheres to green concrete. Ideal for tilt-up foundations, decks, and planter boxes, it won't slump, crack, or harm insulation or EPS materials.



HRM 714 – Hot-Applied Rubberized Waterproofing Membrane

A hot-applied, 100% solids rubberized asphalt that flows into a seamless monolithic shield. The tough yet flexible film resists chemicals, fertilizers, and saltwater while maintaining extremely low vapor permeance. Perfect for green roofs, split-slab decks, tunnels, and parking structures, it offers zero VOCs and long-term waterproofing performance.



MEL-ROL® – Self-adhering sheet membrane

A 60-mil, self-adhering bituminous membrane laminated to rugged cross-laminated poly film. A printed guide and exposed selfedge speed precise overlaps, creating continuous protection for tilt-up foundations, walls, and plaza decks. Flexible, versatile, and jobsite-friendly, MEL-ROL delivers proven moisture defense—even in cold climates with its low-temperature formulations, options available.



MEL-ROL LM – Liquid-applied, seamless membrane

A single-component, water-based liquid membrane that sprays or rolls on to create a seamless, fully bonded waterproof skin. High solids yield rapid build and low perm, bridging minor cracks while accepting protection boards. Zero-VOC, cold-applied chemistry adheres to ICFs, damp concrete, and tilt-up panels without primers required.

PATCH & REPAIR

Perfecting Your Panels, the Right Way

Achieve factory-smooth, show-piece panels even after the rigors of lifting, bracing, and trucking. W. R. MEADOWS patch-and-repair mortars feather cleanly from a true zero edge, erasing bugholes, air voids, and hardware bruises without ghosting through architectural finishes. Polymer-modified chemistry bonds tenaciously to tilt-up concrete, resists shrinkage, and matches color and texture for an invisible repair. Need deeper rehabilitation? High-build companion blends fill edge spalls or form offsets up to two inches thick in a single lift, maintaining structural integrity and freeze-thaw durability. Fast set times, easy trowel ability, and excellent sand ability keep crews moving and schedules intact - delivering panels that look as strong as they perform.



MEADOW-PATCH® SMOOTH GRADE - Ultra-Smooth Surface Finisher

A polymer-modified, sand-free finishing mortar that creates an ultra-smooth façade on precast, cast-in-place, or tilt-up concrete. Its creamy consistency and 45-minute pot life let crews fill bugholes, honeycombs, and surface waves up to 1/4-inch thick, producing paint-ready panels without blocking vapor transmission for interior or exterior applications.



MEADOW-PATCH 5 - Very-Fast Repair & Waterstop

A one-component, very fast-setting repair mortar and hydraulic waterstop that bonds tenaciously to concrete. The low-slump blend trowels, shapes, or shaves easily for vertical, overhead, or horizontal repairs and instantly plugs minor active leaks. Use it to patch precast elements, tie-rod holes, curbs, gutters, and pipes.



MEADOW-PATCH 20 - Fast Setting Cementitious Repair Mortar

Delivers fast, general-purpose concrete repair in a single component. The light-gray, low-slump mortar trowels and feathers from featheredge to one inch on vertical, horizontal, or overhead surfaces. Rapid strength gain minimizes downtime, making it ideal for precast patches, columns, beams, and routine tilt-up panel touch-ups on any jobsite.



MEADOW-PATCH T1 - Thin-Patch Maintenance Mortar

A polymer-modified thin-patch mortar designed for localized repairs from featheredge to one inch. It mixes to a creamy, easy-finish consistency that bonds securely and resists freeze-thaw action. Ideal for smoothing walls, stairs, balconies, and slab defects, leaving traffic-ready surfaces within hours for interior and exterior tilt-ups alike.



MEADOW-PATCH T2 - Resurfacer & Deep Patch

A two-component, polymer-modified resurfacer that levels worn concrete from 1/16 to 1/2 inch and patches to two inches. High abrasion resistance supports rubber-wheeled traffic, while breathable chemistry accepts stains, coatings, or stencils. Spray, broom, or trowel to rejuvenate sidewalks, decks, driveways, and general-purpose tilt-up slabs too.

GROUTS

Filling the Voids, the Right Way

When tilt-up panels are set, true strength comes from what you can't see. W. R. MEADOWS precision grouts flow easily under shim packs, column bases, and bearing plates, then lock up to deliver high early and ultimate compressive strength. Non-shrink chemistry guarantees full, permanent load transfer without settlement or voids, while corrosion-inhibiting additives and dense, low-permeability matrices defend against water, salts, and freeze-thaw cycles. Pumpable, pourable, or dry-pack formulations install quickly and cure fast, keeping schedules tight and panels plumb. Specify W. R. MEADOWS grouts for rock-solid stability—right where it counts.



CG-86™ – Construction-Grade Grout

A premixed, non-metallic, non-shrink cementitious grout engineered for everyday structural grouting. Mixed to dry-pack, plastic, flowable, or fluid consistency, it flows easily under shim packs, column plates, bearing pads, and precast panels, then cures to high, positive-expansion strength without gypsum or chlorides. Freeze-thaw stable for interior or exterior use, it can be economically extended with pea gravel for deep placements. Simply add water—no bonding agents or site batching—for dependable load transfer on tilt-up projects.



PAC-IT® – Expansive, Dry-Pack Grout

A pre-mixed, non-ferrous, non-shrink dry-pack grout designed for tight, form-free packing beneath column bases, precast panels, beams, and post-tensioned elements. The low-slump, high-density mix wets quickly onsite, delivering excellent workability and high one-day strengths that lock alignment fast. Expansion during cure provides permanent, void-free bearing without costly formwork, saving time and labor on tilt-up jobs. Freeze-thaw durable, PAC-IT excels indoors or out, above or below grade.



EG-96 HP – High Strength & Performance Epoxy Grout

A 3-component, 100%-solids epoxy system that pours smoothly from 1 to 8 depths, completely filling spaces under dynamic equipment bases, crane rails, and wind-turbine sole plates. Rapid strength gain, superior creep resistance, and thermal stability secure precision alignment under heavy impact and vibration. The VOC- and BGE-free resin bonds aggressively to concrete and steel, resisting oils, solvents, and aggressive chemicals. Adjustable flow accommodates variable clearances, delivering long-term, non-shrink support for critical tilt-up machinery indoors or out in harsh environments.



588-10K – Precision, Non-Shrink, Mineral-Aggregate-Based Grout

A hydraulic-cement-based, precision, non-shrink, load-bearing grout designed to transfer load effectively and safely, ensuring long service time of the grouted item. It is a non-corrosive, non-metallic, mineral-based precision grout, developed to have high initial and ultimate flexural and compressive strengths. It can be mixed quickly as needed on the jobsite. 588-10K offers exceptional workability and is easily placed by pouring or pumping. The product is designed to give non-shrink performance under various conditions for both interior and exterior applications.

EPOXY/ ADHESIVES

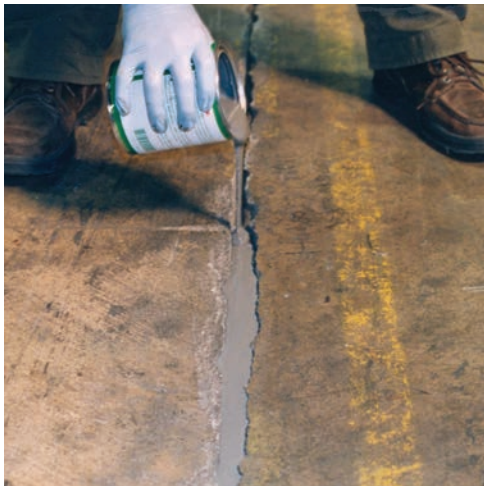
Raising the Bar, One Layer at a Time

W. R. MEADOWS presents a full line of polymeric epoxy and polyester-based bonding and anchoring adhesives to compliment many construction needs. The proven line of W. R. MEADOWS load-bearing adhesives, including our REZI-WELD line, provides high structural bond strength and adhesive properties for bonding, doweling, and anchoring applications. W. R. MEADOWS has been promoting anchoring and doweling adhesives for roadway and airport runway construction successfully for over 35 years. We are the proven leaders in the highway construction market. These products feature ease of application, various packaging designs, multiple formulations, different viscosities, and unparalleled performance tailored to meet your needs.



REZI-WELD™ LV – Low Viscosity Injection Epoxy

A moisture-insensitive, ultra-low-viscosity epoxy that gravity-feeds or pressure-injects into hairline, non-moving cracks, re-knitting concrete to full structural strength. Unitized, pre-measured kits—complete with a mixing paddle on 1 gal units—eliminate proportioning errors and speed field work. Once cured, the high-modulus resin resists industrial chemicals and temperature swings while remaining self-leveling for easy placement. Extend with sand or aggregate to create economical epoxy mortars for patching, non-skid toppings, or machinery base grouting. LV also doubles as a primer beneath DECK-O-SEAL systems, delivering one dependable solution for precision crack repair, bonding, and surface preparation.



REZI-WELD 1000 – Multi-Purpose, Medium Viscosity Construction Epoxy

A two-component, self-leveling epoxy adhesive engineered for concrete-to-concrete or concrete-to-steel bonds that must endure heavy static or dynamic loads. Color-coded, unitized packaging guarantees proper mix ratios, while moisture insensitivity and strong chemical resistance ensure durable performance in wet or aggressive environments. Apply neat for dowel anchoring, steel plate bonding, or anchor-bolt setting; blend with sand to patch spalls, fill voids, or create durable interior non-skid toppings. High modulus and compressive strength keep tilt-up panel connections, beam seats, and retrofit anchors locked tight for the life of the structure.



REZI-WELD GEL PASTE – Thixotropic, Multi-Purpose Construction Epoxy

A rapid-set, non-sag epoxy formulated for vertical, overhead, and horizontal repairs where a flowing liquid would drip or slump. Trowel, inject, or pump the thixotropic paste to fill cracks, seal injection ports, anchor dowels, or build small patches up to feather-edge thickness. The moisture-insensitive, two-component adhesive develops high modulus strength and exceptional bond to concrete, masonry, or steel. Unitized bulk kits and side-by-side cartridges simplify dosing and placement, while gap-filling consistency ensures complete surface contact. GEL PASTE bridges voids liquids can't—making it the go-to epoxy for precision anchoring and structural patching.

EXPANSION JOINT FILLERS

Easy to Handle,
Install, and Maintain

When you're tackling a tilt-up construction project, every detail counts - especially when it comes to expansion joints. With W. R. Meadows' expansion joint fillers, you're choosing a product designed to excel under pressure. Our joint fillers have been meticulously crafted for superior performance, offering durability, resilience, and flexibility. They effectively absorb the stresses of expansion and contraction, safeguarding the structural integrity of your build. With W. R. Meadows, your tilt-up construction projects can weather all conditions without compromising on quality or aesthetics. Take your tilt-up construction to the next level with W. R. Meadows' expansion joint fillers - because your projects deserve the best!



FIBRE EXPANSION JOINT – Expansion-Contraction Joint Filler

A resilient, non-extruding joint filler made from cellular fibers uniformly bonded and asphalt-saturated for long life. Introduced in the early 1930s, it carries more than 90 years of proven performance. Cost-effective and versatile, the material compresses to half its thickness and rebounds to at least 70 percent, ensuring reliable movement accommodation in concrete construction joints worldwide today.



X-FOAM™ – Flexible, Lightweight, Concrete Expansion Joint Filler

X-FOAM expansion joint filler is a flexible, lightweight, non-staining, polypropylene, closed-cell expansion joint filler. It is a chemical-resistant, ultraviolet stable, non-absorbent, low density, cost-effective, compressible foam that offers an extended service life in both interior and exterior applications.



CERAMAR® – Flexible Foam Expansion Joint

CERAMAR is a flexible foam expansion joint filler composed of a unique synthetic foam of isomeric polymers in a very small, closed-cell structure. Gray in color, CERAMAR is a lightweight, flexible, highly resilient material offering recovery qualities of over 99%. The compact, closed-cell structure will absorb almost no water.



DECK-O-FOAM® – Expansion Joint Filler

DECK-O-FOAM expansion joint filler is a flexible, lightweight, non-staining, polyethylene, closed-cell expansion joint filler. It is a chemical-resistant, ultraviolet stable, non-absorbent, low density, cost-effective, compressible foam that offers an extended service life in both interior and exterior applications.



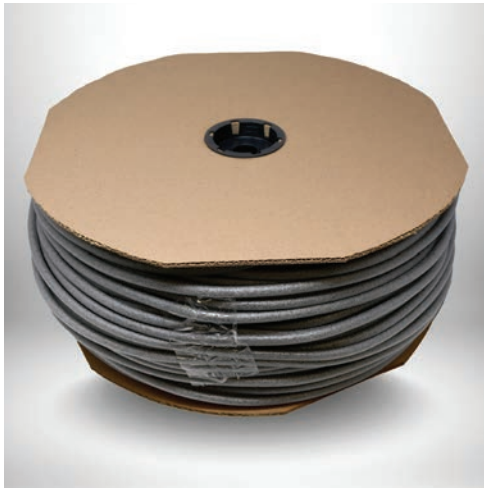
SNAP-CAP® – Used in conjunction with any rigid expansion joint filler

Fits over rigid expansion joint filler, ensuring a straight, uniform void free of slurry and debris until sealing. After curing, remove the top to expose clean concrete faces, promoting balanced sealant adhesion. Perfect for horizontal or vertical pours. Simplifies installation and saves labor while providing professional-grade joint preparation.

BACKER RODS

Supporting Your Project, One Piece at a Time

Expansion joint fillers play a significant role in the longevity and functionality of tilt-up construction projects. As concrete structures are inherently susceptible to expansion and contraction due to temperature fluctuations and moisture changes, accommodating these movements is crucial to prevent potential damage. Expansion joint fillers, strategically placed between concrete panels or sections, provide the necessary flexibility and support, allowing the structure to expand or contract without causing distress to the overall building. By absorbing the stress from these movements, these fillers mitigate the risk of cracking, spalling, or deformation in the concrete, thereby preserving structural integrity and prolonging the lifespan of the building.



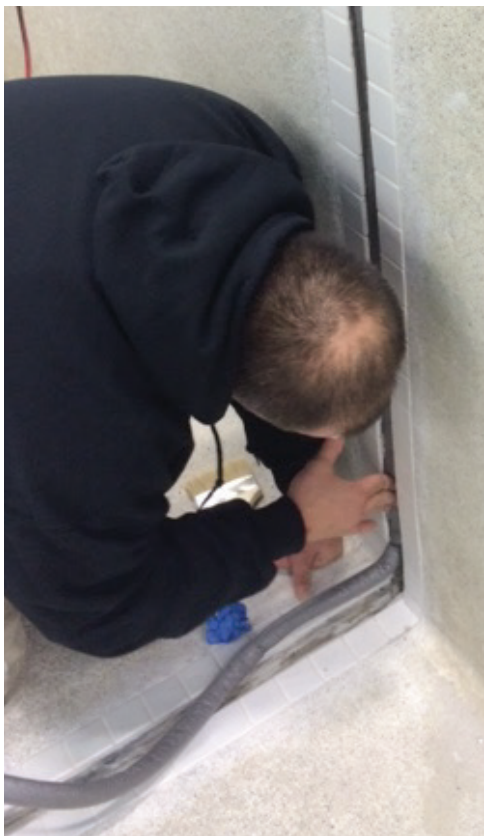
KOOL-ROD™ – Backer Rod for Cold-Applied Sealants

KOOL-ROD is a closed cell, polyethylene, flexible, rope-like foam joint backing material. This material is virtually non-absorbent and chemically inert to most solvents. KOOL-ROD will not stain or adhere to sealant materials. It is fully compatible with acrylic, butyl, polyurethane, polysulfide, silicone, and most other cold-applied sealant compounds. KOOL-ROD is specifically designed as a compressible backing material to be used in conjunction with a wide variety of cold-applied joint sealants.

KOOL-ROD SOFT

Soft, Expandable Backer Rod for Cold-Applied Sealants

A polyethylene, flexible, rope-like foam joint backing material. This material is virtually non-absorbent and chemically inert to most solvents. KOOL-ROD SOFT will not stain or adhere to sealant materials. It is fully compatible with acrylic, butyl, polyurethane, polysulfide, silicone, and most other cold-applied sealant compounds. KOOL-ROD SOFT is specifically designed as a compressible backing material to be used in conjunction with a wide variety of cold-applied joint sealants. This special SOFT formulation features enhanced compression attributes, and is also non-gassing and non-bubbling. KOOL-ROD SOFT's compressibility allows the product to fit into a greater variety of joint sizes.



JOINT SEALANTS

Empowering Excellence, One Joint at a Time

Unleash the true potential of your concrete tilt-up constructions with W. R. Meadows' joint sealants. These exceptional products are meticulously crafted to provide superior protection, keeping environmental elements at bay. They maintain the robustness of your structures, ensuring that they remain weather-tight, energy-efficient, and more durable. The sealants also enhance the aesthetics of your construction by providing a neat, finished look to the joints. But that's not all; our joint sealants are user-friendly and efficient, making your construction process smooth and expedited. Step into a new era of enduring, high-quality construction with W. R. Meadows joint sealants—where excellence meets reliability.



POURTHANE® SL – Self-Leveling Joint Sealant

Flows effortlessly into horizontal joints to create a smooth, durable seal without tooling. The one-component, non-bubbling formula can be poured onto green or damp concrete and cures rapidly, reopening pavements sooner. Permanently elastic with $\pm 25\%$ movement capacity, it stands up to jet fuel, ethanol, de-icing salts, and heavy forklift traffic. Specify it for sidewalks, decks, plazas, warehouses, runways, or pitch pans—anywhere a traffic-tolerant, weather-resistant seal is required. Low VOC packaging in cartridges or bulk makes POURTHANE SL a contractor-friendly, environmentally compliant solution.



POURTHANE NS – Non-Sag Polyurethane Joint Sealant

A one-component, moisture-curing polyurethane formulated for vertical or sloped joints where a bead must stay exactly where it's gunned. It bonds primer-free to concrete, masonry, wood, aluminum, PVC, and even baked-clay roof tiles, delivering $\pm 35\%$ movement with very low VOC content. Once tooled, the elastomer resists UV, rain, and temperature swings without cracking or chalking, making it perfect for precast panel joints, façade transitions, window perimeters, and tile ridge caps. Cartridges, sausages, and bulk pails simplify logistics and cut job-site waste.



REZI-WELD™ FLEX – Semi-Rigid Epoxy Joint Filler

A pourable, self-leveling epoxy formulated to protect interior concrete floor joints from hard-wheel traffic. It shields joint edges from spalling while retaining enough flexibility to accommodate slab movement. Fast-setting and moisture-insensitive, FLEX quickly fills saw cuts, construction joints, or random cracks; it also encapsulates control wires in tilt-up panel beds. Easy cartridge or bulk application speeds production, and superior adhesion keeps filler locked in place under forklifts, pallet jacks, and heavy loads, raising durability one joint at a time.



Guardian of the Structure



#wrmeadows

W. R. MEADOWS, INC.

P.O. Box 338 • Hampshire, IL 60140-0338
Phone: 847/214-2100 • Fax: 847/683-4544
1-800-342-5976

www.wrmeadows.com • info@wrmeadows.com

HAMPSHIRE, IL / CARTERSVILLE, GA / YORK, PA
FORT WORTH, TX / BENICIA, CA / POMONA, CA
GOODYEAR, AZ / MILTON, ON / SHERWOOD PARK, AB

19-25
BR #