



## Concrete Repair, Protection & Prevention Products

- Sustainable
- Environmentally Responsible
- Reduces Carbon Footprint





# REPAIR, RESTORE, PROTECT, PREVENT...



Concrete is porous like a sponge. This porosity allows for the harsh environment to enter the concrete, causing corrosion and freeze-thaw damage. Protecting concrete with penetrating and topical sealers and waterproofing products helps eliminate the intrusion of water, salts, chemicals, and environmental irritants, therefore increasing the life cycle of the structure. These products form a durable physical barrier between the concrete and harsh environment, like a jacket protects from the cold and rain. You wouldn't leave home without proper protection from the elements, so why leave your concrete exposed? Protect it with our sealing and waterproofing products.

## ... STRATEGIES THAT HAVE ALLOWED W. R. MEADOWS TO OFFER THE MOST COMPREHENSIVE SOLUTIONS THROUGH THE ENTIRE LIFE CYCLE OF YOUR STRUCTURE.

Since 1926, W. R. MEADOWS has offered opportunities and solutions to building owners, architects, engineers, contractors, and distributors to better serve the concrete repair market.

W. R. MEADOWS has the products and solutions to meet today's demanding concrete repair, restoration and protection needs for the industrial, civil, institutional, building, parking, wastewater, and public markets. We offer a wide range of solutions to protect and repair industrial structures, such as pulp and paper mills, automotive plants, power and energy generating facilities, processing facilities, beverage distribution centers, manufacturing, mining, pharmaceutical plants, and more. We also offer products that are used daily for repair, protection, and maintenance in the highway, bridge, and parking industries that keep our roads open and safe.

We offer solution-based products supported by a knowledgeable presentation team and industry-recognized project leaders. Our team of sales professionals is continuously trained, and have the desire to get hands-on with the products. Our sales professionals offer onsite solutions

and Q & A sessions for training and knowledge enrichment. We work, stand, and partner with the industry and these assets have set W. R. MEADOWS apart from all competition for over 90 years and have made us the industry leader in many markets.

Concrete is a durable building material; this is demonstrated in the many hundreds of years old concrete structures still standing today. We know this since we can visit structures hundreds of years old. So, why does concrete need repair? These days concrete experiences much more wear and tear than it did hundreds of years ago. We embed reinforcing steel into the concrete for structural integrity; we expose the concrete to deicing salts that cause reinforcing steel corrosion. We place concrete in harsh environments without properly protecting against the adverse effects. We overstress the concrete, exposing its structural limitations.

Due to all these stresses, concrete structures will need to be repaired at some point in their life cycle. Protection of concrete structures during the construction phase will delay the onset of concrete deterioration and lessen

the need for concrete repairs. Potential repairs are not only delayed, but tend to be less severe and frequent, reducing cost and facility interruptions, especially when coupled with ongoing preventive maintenance. If no protection or preventive maintenance is performed, the concrete repairs are more frequent and severe, sometimes causing loss of structural integrity. Protecting your structure on an ongoing basis is key to decreasing the cost of repairs during the life cycle of the structure, which in turn will result in increased profitability for the owner.

W. R. MEADOWS has been providing products for the protection and preventative maintenance of concrete structures to the industry longer than any other major supplier in North America. Our products have been made in the U.S. since 1926 and we work diligently to support our customers through providing our customers with quality, service, and integrity. In trusting your structure to W. R. MEADOWS, your investment will be guarded and protected by over 90 years of proven products and experience.

# Repair, Restore, Protect, and Prevent— the most suitable actions an owner can perform on a concrete structure.

Repair, restore, protect, and prevent are the most efficient and sustainable actions an owner can perform on a concrete structure, as compared to the demolition of the structure— which has a large impact on landfills, the release of hazardous chemicals, and the utilization of enormous amounts of energy in the demolition and cleanup phases. New construction also puts pressure on our non-renewable and unsustainable resources for future generations and also introduces a vast amount of carbon emissions, adding to greenhouse gas levels. Simply put, repairing and protecting concrete will reduce the carbon footprint and the impact on our non-renewable and unsustainable resources by a large margin.

## CONCRETE REPAIR & PROTECTION – LEADING TO A BETTER FUTURE – COST EFFECTIVE FOR THE OWNER

### ① Structural Restoration

W. R. MEADOWS offers a full line of technically advanced mortars designed to offer solution-based repairs, rehabilitation, and reinstatement of structural concrete elements. The MEADOW-CRETE® and FUTURA® families of structural repair mortars are designed to be hand-applied, machine-applied, pumped, or form and poured into place. These products are designed for horizontal, vertical, and overhead applications. All these premium-grade structural repair mortars have been developed to have superior properties for the repair, reinstatement, and protection of the existing concrete and reinforcing steel.

**Available products include:**  
MEADOW-CRETE GPS, MEADOW-CRETE FNP, MEADOW-CRETE FNP EXTENDED, FUTURA-15, FUTURA-45, and FUTURA-45 EXTENDED.

### ② Surface Renovation

W. R. MEADOWS offers a full line of surface-renovation products designed to repair and restore existing concrete structures. The MEADOW-PATCH® line of surface renovation mortars is designed to restore the surface of deteriorated, freeze-thaw damaged concrete or repair new construction surface defects. They are designed for horizontal, vertical, and overhead applications and provide the ultimate in bond strength, wear, and impact strength and are compatible with existing concrete to ensure long-term durability and service for the owner.

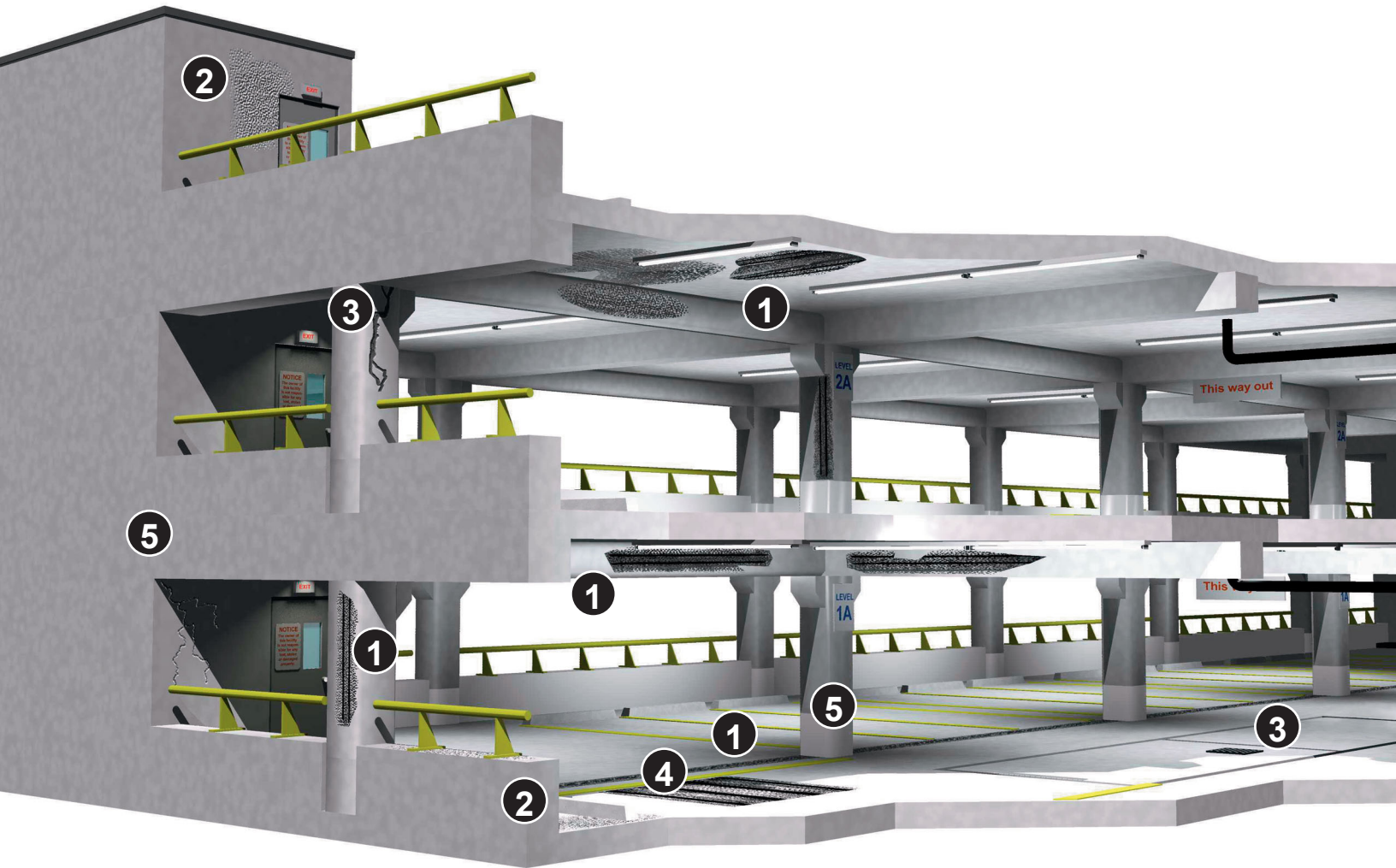
**Available products include:**  
MEADOW-PATCH T1, MEADOW-PATCH T1 (Light Gray), MEADOW-PATCH 5, MEADOW-PATCH 20, FLOOR-TOP® STG, MEADOW-PLUG™, SPECTRUM RE-KOTE TF, and MEADOW-PATCH SMOOTH-GRADE.

### ③ Crack Repair and Joint Restoration

W. R. MEADOWS offers a full line of structural adhesives for crack repair, as well as sealants for joint restoration. We offer a full line of structural epoxy injection resins to repair non-moving cracks in structural and non-load bearing concrete members and the ancillary products needed to accomplish the project successfully. We offer premium-grade polyurethane non-sag and self-leveling joint sealants along with polysulphide-based sealants. We have cementitious and resin-based products for the reinstatement of the joint nosing prior to sealing with one of our many available joint sealants and fillers to meet your various requirements.

**Available products include:**  
REZI-WELD™ GEL PASTE, REZI-WELD GEL PASTE STATE, REZI-WELD 1000, REZI-WELD LV, REZI-WELD LV STATE, REZI-WELD FLEX, the FUTURA line of products, REZI-WELD 3/2, POURTHANE® NS, and POURTHANE SL.





#### 4 Anchoring and Bonding

W. R. MEADOWS offers a full line of cementitious and resin-based structural anchoring adhesives, doweling adhesives, and grouts. These structural anchoring products are available in bulk and unitized cartridges for ease of application. The products are easy to use, available in rapid-setting formulations, and also are approved by many departments of transportation. We also have a full line of epoxy and water-based bonding agents for load bearing and non-load bearing applications that are moisture resistant and conform to stringent ASTM C 881 or ASTM C 1059 requirements. These products are designed to bond new concrete to old and hardened concrete to hardened concrete in slab toppings, bridge overlays, and structural composite slab construction. Also, they are designed to structurally bond precast segmental concrete elements in shear key applications.

Available products include:

REZI-WELD GEL PASTE, REZI-WELD GEL PASTE STATE, REZI-WELD 1000, REZI-WELD LV, REZI-WELD LV STATE, ACRY-LOK™, INTRALOK®, and SPEED-E-ROC™.

#### 5 Protective Coatings, Sealers, and Waterproofing Membranes

W. R. MEADOWS offers a full line of cementitious based waterproofing coatings for both positive and negative side waterproofing applications of existing structures during rehabilitation to protect reinforcing steel from corrosion and for new concrete construction. We offer a full of line of silane/siloxane penetrating and topical acrylic and hybrid sealers for the protection of existing concrete after rehabilitation and renovation to protect the concrete from the adverse effects of salts and from the harsh environment. These premium-grade penetrating and topical sealers are also designed for new construction projects. They protect the structure from the onset to minimize the need for costly repairs later, thus decreasing the cost of maintaining the structure and increasing the life expectancy. We offer a

full line of waterproofing membranes for split slab, plaza deck, and renovation projects and new construction to protect the structure from the corrosive effects of water leakage and structural damage.

Available products include:

CEM-KOTE® FLEX ST, CEM-KOTE FLEX CR, CEM-KOTE CW PLUS, ADI-CON® CW PLUS, INTRAGUARD™, HYDRALASTIC 836, MEL-ROL®, TIAH® OTC, PENTREAT™ 244-40, PENTREAT 244-40 OTC, PENTREAT 244-100.

# Products to Meet Your Needs

## ① STRUCTURAL RESTORATION

### MEADOW-CRETE GPS

**One-Component, Polymer-Modified, General Purpose Structural Repair Mortar**

MEADOW-CRETE GPS is a one-component, trowel- or pneumatically-applied (wet process), migrating-corrosion-inhibitor enhanced, polymer-modified, shrinkage-compensated, fiber-reinforced, micro-silica enhanced, cementitious repair mortar for horizontal, vertical, and overhead applications.

### MEADOW-CRETE FNP

**One Component, Flowable, Form & Pour or Pump Structural Repair Mortar**

MEADOW-CRETE FNP is a one-component, flowable, shrinkage-compensated, corrosion inhibitor enhanced repair mortar for structural applications. MEADOW-CRETE FNP can be formed and poured or formed and pumped, utilizing a suitable grout pump. It has a low permeability, protects embedded reinforcing steel, and provides a low in-place cost.

### MEADOW-CRETE FNP EXTENDED

**One-Component, Pre-Extended, Flowable, Form & Pour Structural Repair Mortar**

MEADOW-CRETE FNP EXTENDED is a one-component, pre-extended, shrinkage-compensated repair mortar for structural repairs and reinstatement of concrete elements. The product can be formed and poured or formed and pumped, utilizing a suitable concrete pump. MEADOW-CRETE FNP EXTENDED contains 3/8" nominal size aggregate and is suitable for applications requiring cathodic protection, impressed systems, or sacrificial anode applications. MEADOW-CRETE FNP EXTENDED is freeze-thaw stable and is ideal for reinstatement. The product is ideal for structural restoration from 1/4" to deep horizontal, vertical, and overhead. The product is suitable for industrial, transportation, residential, and civil engineering applications.

### FUTURA-15

**Very Rapid-Hardening Horizontal Repair Mortar**

FUTURA-15 is a one-component, cementitious, rapid-hardening, structural repair mortar designed for horizontal applications having a 15 minute set time at ambient temperatures. FUTURA-15 is composed of selected cements, graded sands, and chemical additives. This proprietary blend produces a very rapid-setting structural repair mortar, even in cold weather conditions, without the aid of chloride- or gypsum-based accelerators.

#### SPECIFICATIONS

*ASTM C 928-99a "Packaged, Dry, Rapid Hardening Cementitious Materials for Concrete Repair," Classification R1, R2 & R3, Very Rapid Hardening.*

### FUTURA-45

**Rapid-Hardening Horizontal Repair Mortar**

FUTURA-45 is a one-component, cementitious, rapid-hardening structural repair mortar designed for horizontal applications having a 45 minute set time at ambient temperatures. FUTURA-45 is composed of selected cements, graded sands, and chemical additives. This proprietary blend produces a rapid-setting structural repair mortar, even in cold weather conditions, without the aid of chloride- or gypsum-based accelerators.

#### SPECIFICATIONS

*ASTM C 928-99a "Packaged, Dry, Rapid Hardening Cementitious Materials for Concrete Repair," Classification R1 & R2 Rapid Hardening.*

### FUTURA-45 EXTENDED

**Rapid-Setting Concrete**

FUTURA-45 EXTENDED is a one-component, shrinkage compensated, proprietary blend of cements, aggregates, and performance-enhancing chemical additives having a 45 minute set time at ambient temperatures. This rapid setting concrete is mixed with water on site and used for large-scale horizontal concrete repairs and form and pour vertical applications that require high early-strength gain.

#### SPECIFICATIONS

*ASTM C 928-99a "Packaged, Dry, Rapid Hardening Cementitious Materials for Concrete Repair," Classification R1 & R2 Rapid Hardening.*





## ② SURFACE RENOVATION

### MEADOW-PATCH T1

#### One-Component, Polymer-Modified, Thin Patch Repair Mortar

MEADOW-PATCH T1 is a one-component, polymer-modified, cementitious repair mortar designed for horizontal, vertical, and overhead applications. This all-purpose mortar is designed for maintenance patching and minor repairs 1" to featheredge. Also available in a light gray version.

### MEADOW-PATCH T2

#### Concrete Resurfacer & Repair Mortar

MEADOW-PATCH T2 is a two-component, polymer-modified, cementitious concrete resurfacer and repair mortar. This all-purpose mortar is designed for maintenance, patching, and minor repairs, 4" to featheredge.

### MEADOW-PATCH 5 and MEADOW-PATCH 20

#### Very Fast Setting & Fast Setting General Purpose Cementitious Repair Mortar

These MEADOW-PATCH products are one component, cementitious, fast setting restoration/repair mortars. The products have a light gray color and are designed for vertical, overhead and horizontal applications. These fast setting, low slump repair mortars may be troweled, shaped, molded and shaved before taking a final set. The products are an excellent patching solution for difficult vertical and overhead applications without using expensive forming techniques.

### FLOOR-TOP STG

#### Standard-Grade, Self-Leveling Topping/Underlayment

FLOOR-TOP STG is a standard traffic-grade, single-component, shrinkage-compensated, self-leveling floor topping and underlayment that may be pumped or poured. FLOOR-TOP STG is specially designed to smooth out uneven, rough or minorly deteriorated interior concrete floors.

### MEADOW-PLUG

#### One-Component, Super Fast Setting, Hydraulic Repair Mortar

MEADOW-PLUG is a specially blended, extremely fast setting, hydraulic cement product designed to instantly stop running water or fluid seepage in concrete or masonry structures. This single component, high strength repair mortar plugs non-moving cracks, joints, and voids.



FLOOR-TOP STG

### SPECTRUM RE-KOTE TF

#### Concrete Repair Mortar and Resurfacer

SPECTRUM RE-KOTE TF is a single-component, polymer-modified, rapid-hardening, cementitious concrete repair mortar designed for the renovation and resurfacing of deteriorated concrete surfaces. SPECTRUM RE-KOTE TF contains a migrating corrosion inhibitor.

### MEADOW-PATCH SMOOTH GRADE

#### One-Component, Polymer-Modified, Concrete Surface Refinisher

MEADOW-PATCH SMOOTH-GRADE is a single-component, polymer-modified, cement-based, sands-free material used for achieving an ultra-smooth finish on precast, cast-in-place, tilt-up or other unfinished concrete surfaces. This product offers superior adhesion and durability. It is not a vapor barrier, contains no added gypsum, has excellent workability for trowel application, and has an extended pot life for enhanced working time.



MEADOW-PATCH T2



MEADOW-PATCH SMOOTH-GRADE

## ③ CRACK REPAIR AND JOINT RESTORATION

### REZI-WELD GEL PASTE and REZI-WELD GEL PASTE STATE

#### Gel Consistency-Thixotropic, Multi-Purpose Construction Epoxy

REZI-WELD GEL PASTE and REZI-WELD GEL PASTE STATE are high viscosity, rapid setting, thixotropic, structural, epoxy-based, chemical anchoring/bonding adhesives and injection resins. The products provide high mechanical properties and bond strength to concrete and various other substrates. The products are both two-component, moisture insensitive construction epoxies, which can be troweled, brushed, injected, or pumped.

#### SPECIFICATIONS

AASHTO M 235, Type I, II, IV & V, Grade 3, Classes B & C  
ASTM C 881, Type I, II, IV & V, Grade 3, Classes B & C  
Various Departments of Transportation Approvals

### REZI-WELD 1000

#### Multi-Purpose, Medium Viscosity Construction Epoxy

REZI-WELD 1000 is a medium viscosity, two-component, construction-grade structural epoxy adhesive. It is moisture insensitive and resistant to many chemicals. High modulus, high strength REZI-WELD 1000 is color coded to assure proper mixing, and is self-leveling and easy to apply.

#### SPECIFICATIONS

AASHTO M 235, Type I, II, IV & V, Grade 2, Classes B & C  
ASTM C 881, Type I, II, IV & V, Grade 2, Classes B & C  
Various Departments of Transportation Approvals

### REZI-WELD LV and REZI-WELD LV STATE

#### Low Viscosity Injection Epoxy

REZI-WELD LV and REZI-WELD LV STATE low viscosity injection epoxies are moisture insensitive, very low viscosity, high modulus, high strength structural injection resins. The products resist most chemicals and features a unique, innovative unitized packaging concept. It combines two pre-measured components into an easy-to-handle single unit. The unitized packaging eliminates mishandling and mismatching of the components on the jobsite.

#### SPECIFICATIONS

AASHTO M 235 Type I, II, IV and V, Grade 1, Class B & C  
ASTM C 881 Type I, II, IV and V, Grade 1, Class B & C  
Various department of transportation approvals

### REZI-WELD 3/2

#### Epoxy Grout-Patch Kit

REZI-WELD 3/2 grout-patch is a moisture-insensitive, two-component epoxy kit for grouting, sealing base plates, and patching concrete. Part A, the specially formulated epoxy resin and selected, graded aggregates is premixed and packaged in a five-gallon container. A drop-in tray is provided to hold the separately packaged Part B, or activator. This handy, unitized packaging provides its own mixing vessel. Just open the pail, remove the tray, add the activator to the premixed epoxy-aggregate compound and it's ready to use. It's that easy.

### POURTHANE NS

#### Non-Sag Joint Sealant

POURTHANE NS is an elastic, low-modulus, one-component, moisture-curing, non-sag, polyurethane sealant. It maintains flexibility and waterproofing joint sealing with high bond strength and provides outstanding durability in the civil and industrial construction markets. The product requires no mixing and typically requires no priming to bond to many materials, including concrete and masonry.

#### SPECIFICATIONS

ASTM C 920-11, Type S, Grade NS, Class 35, Use  $T_1$ ,  $T_2$  NT, O, M, G  
Federal Specification TT-S-00230C, Type II, Class A  
USDA compliant for use in meat and poultry areas  
ISO 11600-F-25LM  
Complies with U.S. EPA, LADCO, and OTC Phase I and Phase II maximum allowable VOC requirements

### POURTHANE SL

#### Self-Leveling Joint Sealant

POURTHANE SL is an elastic, one-component, self-leveling, premium-grade polyurethane sealant specifically developed to be used as a multi-purpose horizontal joint sealant in applications where a high chemical resistance to fuels, oils, and hydrocarbons is required. The product is a moisture cure sealant with excellent adhesive properties and resistance to aging and weathering.

#### SPECIFICATIONS

ASTM C 920-11, Type S, Grade P, Class 25, Use  $T_1$ ,  $T_2$  NT, M, O, G  
Conforms to BS 5212 for determination of resistance to heat, aging, and fuel immersion  
Can/CGSB 19.13-M87, Classification C-1-40-B-N and C-1-25-B-N, No. 81028  
Federal Specification TTS-00230C, Type 1, Class A  
Approval/Standards Conform to ISO 11600 F 25 HM  
USDA compliant for use in areas that handle meat and poultry

## ④ ANCHORING AND BONDING

### ACRY-LOK

#### Acrylic Polymer, Bond-Enhancing Admixture

ACRY-LOK is a high solids, acrylic polymer latex bonding agent and admixture. This milky white liquid is non-yellowing in Portland cement mortars and concrete. When used as an admixture, ACRY-LOK provides increased abrasion and crack resistance, flexural strength, and freeze/thaw tolerance. Permeability is also reduced, providing added protection from chloride intrusion.

#### SPECIFICATIONS

ASTM C 1059-91, Type II (Non-Re-emulsifiable)

### INTRALOK

#### Bonding Agent and Integral Mix/Admixture

INTRALOK bonding agent is a high solids, water-based emulsion admixture suitable for modifying Portland cement compositions. It is also designed for use as a bonding agent between new and hardened concrete. It is a milky white, non-yellowing liquid ready for use and requires no onsite dilution. Cement mortars modified with INTRALOK are hard, tough, and durable. It offers superior tensile, flexural, and impact strengths. Also, mortars and concrete modified with INTRALOK typically show greater adhesion. Concrete modified with INTRALOK is unaffected by ultraviolet light and will not yellow.

#### SPECIFICATIONS

ASTM C 1059, Type 1 (Re-emulsifiable)

### SPEED-E-ROC

#### Rapid-Setting Anchoring Cement Grout

SPEED-E-ROC is a pourable, rapid setting and hardening, high strength, hydraulic cement compound designed for anchoring and grouting. SPEED-E-ROC has a controlled expansion system and is non-shrink. SPEED-E-ROC has an initial set time of 10-20 minutes at 77° F (25° C) and obtains 5,000 psi (34.4 MPa) in one hour.



MEADOW-PATCH T2



## 5 PROTECTIVE COATINGS, SEALERS & WATERPROOFING MEMBRANES

### CEM-KOTE FLEX ST

#### Flexible Cementitious Waterproofing

CEM-KOTE FLEX ST is a highly flexible, fiber-reinforced, breathable, cementitious slurry, consisting of dry Component A and liquid Component B.

### CEM-KOTE FLEX CR

#### Flexible, Hydrogen-Sulfide-Resistant, Cementitious Waterproofing

CEM-KOTE FLEX CR is a highly flexible, fiber-reinforced, hydraulic cement based material. It is a two-component system consisting of dry Component A and liquid Component B. For additional tensile strength, it may be reinforced with REINFORCING FABRIC HD.

### CEM-KOTE CW PLUS

#### Capillary/Crystalline Waterproofing

CEM-KOTE CW PLUS is a one-component (add water only), Portland cement based coating (slurry) containing silica-based materials. Under water pressure (negative or positive), the soluble silicate penetrates (due to osmotic pressure) into the substrate, where it reacts with lime and forms insoluble calcium silicate crystals which "plug" the capillary pores and waterproofs the concrete while allowing water vapor to pass.

### ADI-CON CW PLUS

#### Waterproofing Admixture for Concrete

ADI-CON CW PLUS is a dry, free flowing powder containing a blend of inorganic and organic chemicals, a small amount of sand, and silica-based materials. The reactive materials react with lime generated by the hydration reaction of cement and plug the capillary porosity, making concrete watertight under water head pressure.

### HYDRALASTIC 836

#### Cold-Applied, Single-Component Waterproofing

HYDRALASTIC 836 is a cold-applied, solvent-free, single-component waterproofing compound. It does not shrink, has a low volatile organic compound (VOC) content, and has a very low odor. It will not crack in extreme cold or slump due to softening at high temperatures.

#### SPECIFICATIONS

ASTM C 836

*Complies with all current federal, state, and local maximum allowable VOC requirements, including U.S. EPA, SCAQMD, and OTC*

*Meets Canada VOC Concentration Limits for Architectural Coatings Regulations*

### INTRAGUARD

#### Water-Based, Clear, Penetrating Sealing Compound for Salt Protection

INTRAGUARD is a water-based, penetrating concrete sealing compound for exterior concrete surfaces. Specifically designed to limit the intrusion of moisture and chlorides into concrete surfaces, this proprietary blend of silane and siloxane penetrates deep into the pores of

the concrete to help protect the concrete from scaling caused by deicing salts.

#### SPECIFICATIONS

*U.S. EPA Architectural Coatings Rule:*

*<400 g/L maximum VOC content for sealers*

*SCAQMD Rule 1113: <100 g/L maximum VOC content for waterproofing concrete/masonry sealers*

*Ozone Transport Commission (OTC): <400 g/L maximum VOC content for waterproofing concrete/masonry sealers*

*Dried film is USDA accepted*

### PENTREAT 244-40

#### Water Repellant Penetrating Sealer

PENTREAT 244-40 is a penetrating, 40% active silane sealer that inhibits water and chloride ion penetration in concrete and masonry structures. PENTREAT 244-40 is a hydrophobic, impregnating sealer that helps prevent chloride-induced corrosion of rebar, scaling, spalling, freeze-thaw damage, and other causes of debilitating concrete.

#### SPECIFICATIONS

*NCHRP 244 Series II*

*NCHRP 244 Series IV*

*AASHTO T259/T260*

*ASTM E514*

*ASTM C642*

*ASTM C672*

### PENTREAT 244-40 OTC

#### Water Repellant Penetrating Sealer

PENTREAT 244-40 OTC is a penetrating, 40% active silane sealer that inhibits water and chloride ion penetration in concrete and masonry structures. PENTREAT 244-40 OTC is a hydrophobic, impregnating sealer that helps prevent chloride-induced corrosion of rebar, scaling, spalling, freeze-thaw damage, and other causes of debilitating concrete.

### PENTREAT 244-100

#### Water Repellant Penetrating Sealer

PENTREAT 244-100 is a penetrating, 100% active silane sealer that inhibits water and chloride ion penetration in concrete and masonry structures. PENTREAT 244-100 is a hydrophobic, impregnating sealer that helps prevent chloride-induced corrosion of rebar, scaling, spalling, freeze-thaw damage, and other causes of debilitating concrete.

#### SPECIFICATIONS

*Alberta Transportation B388 Type 1C*

*Federal Specification SS-W-110C*

*NCHRP 244 Series II*

*NCHRP 244 Series IV*

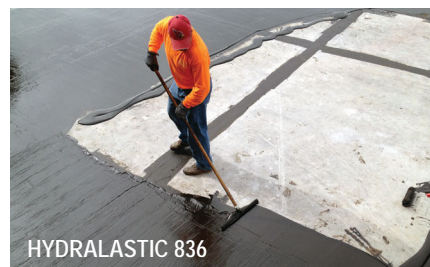
*AASHTO T259/T260*

*ASTM E514*

*ASTM C642*

*ASTM C672*

*OHD L-40*



### TIAH OTC

#### Non-Yellowing Acrylic Sealing Compound

TIAH OTC acrylic sealing compound is an acrylic polymer solution that dries to a transparent film, which improves abrasion resistance of the concrete. The product is specifically formulated for extended working time and provides a tough, clear film that will not after-yellow. It also provides improved weather and stain resistance, combined with a dustproof sealer.

#### SPECIFICATIONS

*Dried film is USDA accepted.*

*Complies with U.S. EPA, LADCO, and OTC maximum allowable VOC requirements*

### MEL-DEK

#### Rolled Waterproofing Membrane

MEL-DEK is a roll-type waterproofing membrane composed of a nominally 53 mil thick layer of polymeric waterproofing membrane on a shrink-resistant, heavy-duty, 12 mil thick polypropylene woven carrier fabric.

### MEL-ROL

#### Rolled, Self-Adhering Waterproofing Membrane

MEL-ROL waterproofing system is a dependable, flexible, versatile, roll-type waterproofing membrane. It is composed of a nominally 56 mil thick layer of polymeric waterproofing membrane on a heavy duty, four-mil thick, cross-laminated polyethylene carrier film. The two components are laminated together under strict quality-controlled production procedures.

#### SPECIFICATIONS

*Dried film is USDA accepted.*

*Complies with U.S. EPA, LADCO, and OTC maximum allowable VOC requirements*

# Which W.R. MEADOWS Restoration Product Works Best for Your Next Project?



## HORIZONTAL REPAIR MORTARS

- MEADOW-CRETE GPS
- MEADOW-PATCH T1 & T2
- MEADOW-PATCH 5 & 20
- FUTURA-15
- FUTURA-45 & FUTURA-45 EXTENDED
- FLOOR-TOP STG
- SPECTRUM RE-KOTE TF

## VERTICAL REPAIR MORTARS

- MEADOW-CRETE FNP
- MEADOW-PATCH T1 & T2
- MEADOW-PATCH 5 & 20
- MEADOW-CRETE FNP EXTENDED
- MEADOW-PATCH SMOOTH-GRADE
- SPECTRUM RE-KOTE TF

## OVERHEAD REPAIR MORTARS

- MEADOW-CRETE GPS
- MEADOW-CRETE FNP
- MEADOW-PATCH T1
- MEADOW-PATCH 5 & 20
- MEADOW-CRETE FNP EXTENDED
- SPECTRUM RE-KOTE TF

## FORM & POUR APPLIED

- MEADOW-CRETE FNP
- MEADOW-CRETE FNP EXTENDED
- SPEED-E-ROC (grouting)

## HAND/TROWEL APPLIED

- MEADOW-CRETE GPS
- MEADOW-PLUG
- FUTURA-15
- MEADOW-PATCH T1 & T2
- MEADOW-PATCH 5 & 20
- MEADOW-PATCH SMOOTH-GRADE
- SPECTRUM RE-KOTE TF

## WET/SPRAY APPLIED

- MEADOW-CRETE GPS
- MEADOW-PATCH T2
- SPECTRUM RE-KOTE TF



FUTURA-45 EXTENDED



MEADOW-CRETE FNP





## EPOXY GROUTING

### REZI-WELD 3/2 Epoxy Grout-Patch Kit

- Moisture insensitive
- Two component
- Flowable Viscosity
- Handy, unitized packaging
- 50-60 minute work life

## SAWCUT FILLER

### REZI-WELD FLEX Epoxy Joint Filler

- Pourable consistency
- Premium grade
- Easily shaved
- Semi-rigid
- Fast setting

## ANCHORING AND BONDING

### POLY-GRIP Polyester-Based Anchoring Adhesive

- Very rapid curing and hardening
- High strength
- Unitized cartridge system
- Suitable for interior or exterior applications
- Quick bolt-up time
- Can be applied in low temperatures

### REZI-WELD GEL PASTE Multi-Purpose Construction Epoxy

- Gel consistency
- Normal set (40-50 min.)
- Moisture insensitive, high modulus
- Epoxy based
- High mechanical properties

### REZI-WELD GEL PASTE STATE Construction Epoxy

- Gel consistency
- Rapid setting
- Easy to use
- High modulus
- Self-contained kit
- Use with standard caulk tool

### REZI-WELD 1000 Construction Epoxy

- Medium viscosity
- Moisture insensitive
- Color-coded mixing
- High modulus
- High strength
- Normal set (30-40 min.)

## EPOXY INJECTION

### REZI-WELD LV Injection Epoxy

- Moisture insensitive
- Very low viscosity
- High modulus
- High strength

### REZI-WELD LV STATE Injection Epoxy

- Ultra low viscosity
- Moisture insensitive
- High mechanical properties



## Serving Your Repair and Restoration Needs Globally

W. R. MEADOWS, INC. is a leading manufacturer of an extensive line of concrete repair and restoration products, with a network of plant locations and stocked warehouses covering the world. Our products are backed by our long-standing reputation for quality, service, and integrity.

**W. R. MEADOWS, INC.**  
P.O. Box 338  
Hampshire, IL 60140-0338  
(847) 214-2100  
FAX: (847) 683-4544

**W. R. MEADOWS OF AZ., INC.**  
P.O. Box 5187  
Goodyear, AZ 85338  
(623) 932-9383  
FAX: (623) 932-1547

**W. R. MEADOWS OF N. CA**  
P.O. Box 907  
Benicia, CA 94510  
(707) 745-6666  
FAX: (707) 747-6206

**W. R. MEADOWS OF S. CA**  
P.O. Box 667  
Pomona, CA 91768  
(909) 469-2606  
FAX: (909) 469-2611

**W. R. MEADOWS OF GA**  
Cartersville W. Industrial Park  
Cartersville, GA 30120  
(770) 386-6440  
FAX: (770) 386-3342

**W. R. MEADOWS OF PA**  
2150 Monroe St.  
York, PA 17404  
(717) 792-2627  
FAX: (717) 792-0151

**W. R. MEADOWS OF TX**  
P.O. Box 7752  
Ft. Worth, TX 76111  
(817) 834-1969  
FAX: (817) 834-0134

**W. R. MEADOWS OF CANADA**  
70 Hannant Court  
Milton, Ontario L9T 5C1  
CANADA  
(905) 878-4122  
FAX: (905) 878-4125

**W. R. MEADOWS  
OF WESTERN CANADA**  
21 Streambank Ave.,  
Sherwood Park, AB T8H 1N1  
(780) 400-1772  
Fax: (780) 400-7745

**INTERNATIONAL WAREHOUSES**  
Australia  
Austria  
Chile  
Germany  
Poland  
Switzerland

For more information about how our concrete repair, protection, and prevention products, here are four quick and easy access points:

- Visit our comprehensive website: [www.wrmeadows.com](http://www.wrmeadows.com)
- Contact W. R. MEADOWS, INC. via email: [info@wrmeadows.com](mailto:info@wrmeadows.com)
- Call toll free: 1-800-342-5976
- Fax: 1-847-683-4544



**W. R. MEADOWS, INC.**  
P.O. Box 338 • Hampshire, IL 60140-0338  
Phone: 847/214-2100 • Fax: 847/683-4544  
1-800-342-5976  
[www.wrmeadows.com](http://www.wrmeadows.com) • [info@wrmeadows.com](mailto:info@wrmeadows.com)

HAMPSHIRE, IL / CARTERSVILLE, GA / YORK, PA  
FORT WORTH, TX / BENICIA, CA / POMONA, CA  
GOODYEAR, AZ / MILTON, ON / SHERWOOD PARK, AB



#wrmeadows

ADI-CON CW PLUS, CEM-COTE CW PLUS, CEM-KOTE FLEX CR, and CEM-KOTE FLEX ST are registered trademarks of Gemile® Products Inc. [techinfo@gemile.com](mailto:techinfo@gemile.com), [www.gemile.com](http://www.gemile.com)

PRINTED IN U.S.A 07/20-3M