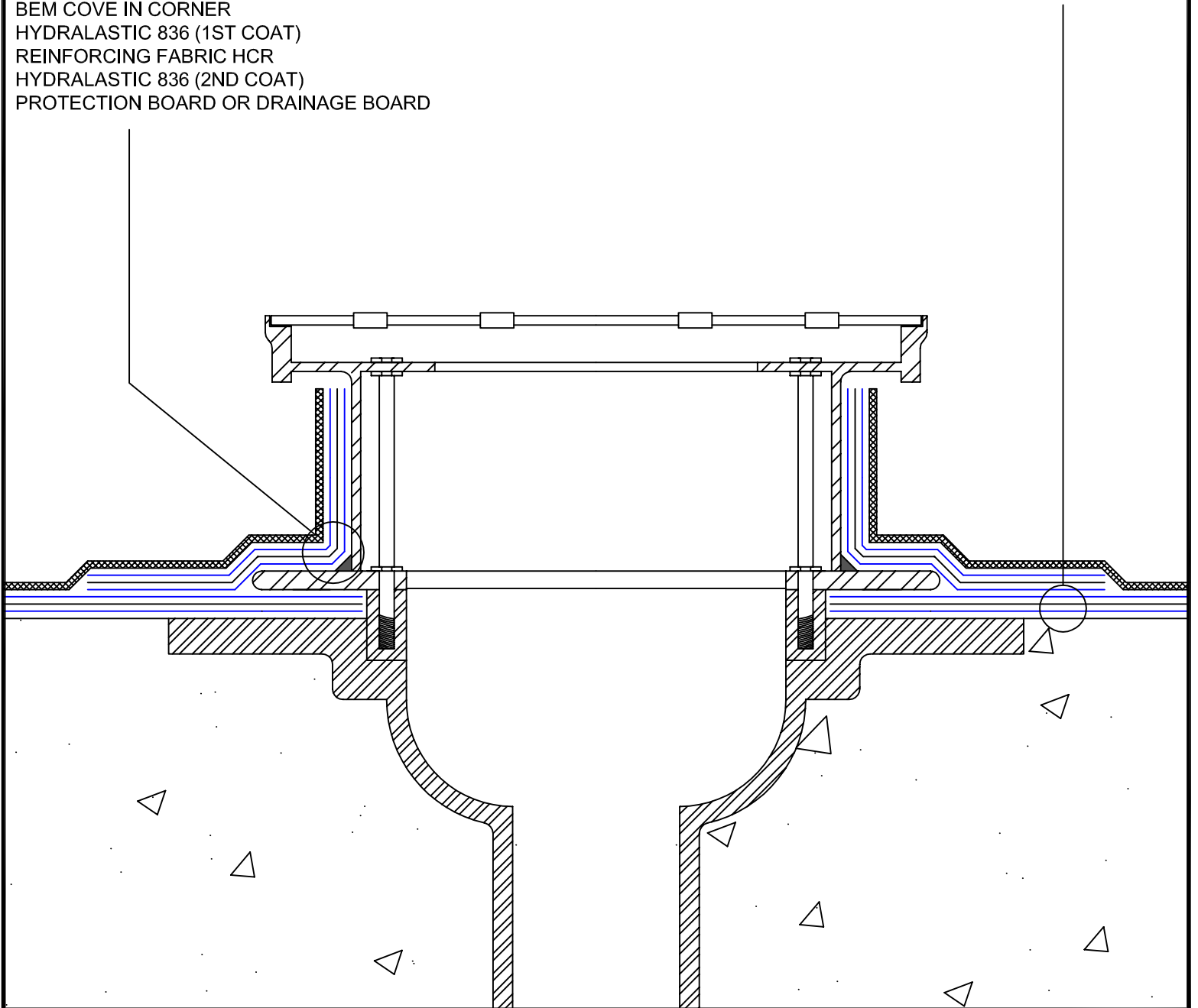


**DECK WATERPROOFING TIE IN TO
PENETRATION DETAIL**

HYDRALASTIC 836 (1ST COAT)
REINFORCING FABRIC HCR
HYDRALASTIC 836 (2ND COAT)
PROTECTION BOARD OR DRAINAGE
BOARD

PENETRATION DETAIL

BEM COVE IN CORNER
HYDRALASTIC 836 (1ST COAT)
REINFORCING FABRIC HCR
HYDRALASTIC 836 (2ND COAT)
PROTECTION BOARD OR DRAINAGE BOARD



W.R. MEADOWS, INC.

300 Industrial Drive
Hampshire, IL 60140-0338
1-800-342-5976
www.wrmeadows.com

SKETCH:

HYDRALASTIC 836 DECK
DRAIN DETAIL

SKETCH NO:

HYDRA - DRAIN - 1

DATE:

01/22/2015