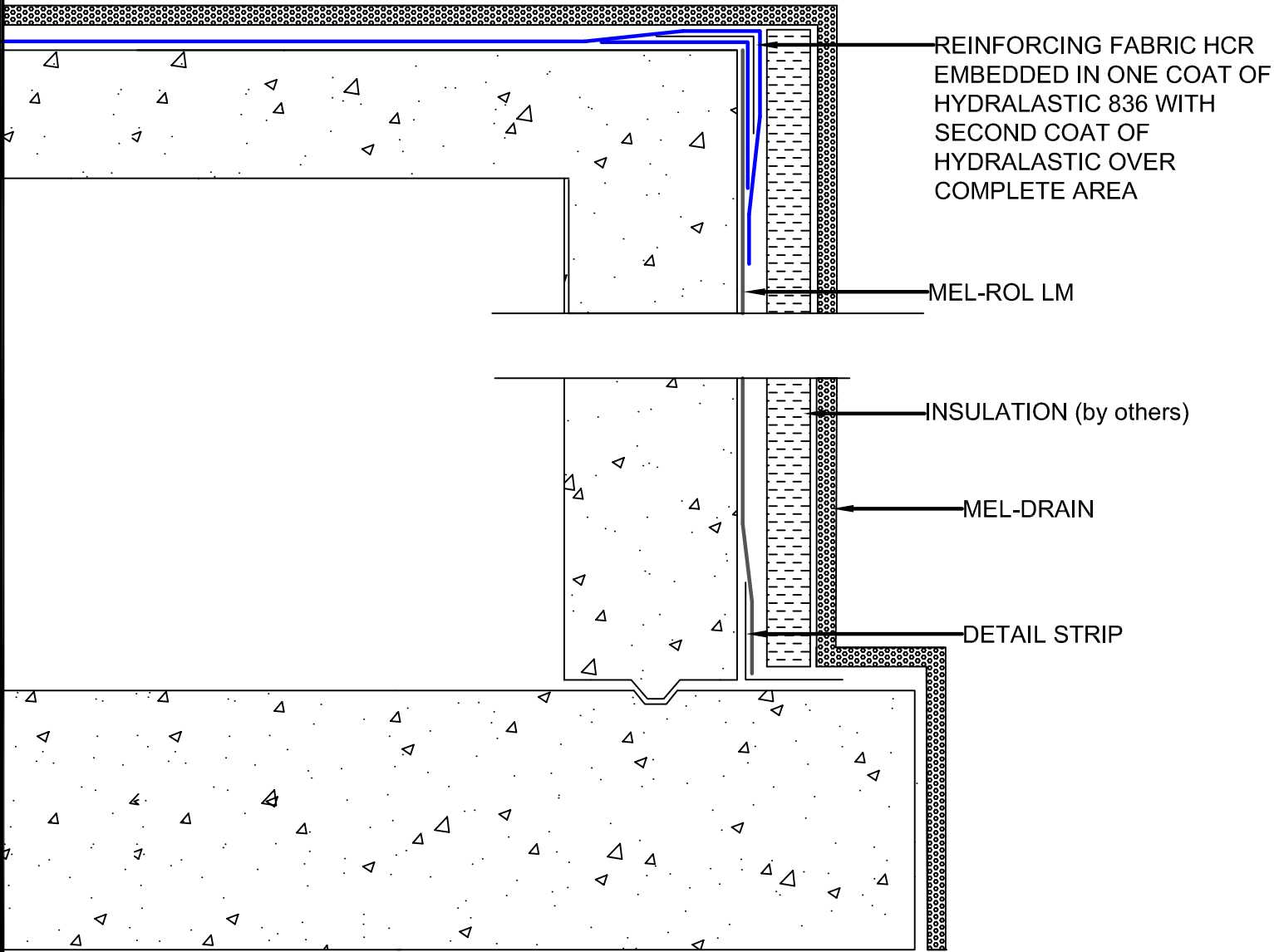


EXTERIOR GRADE



REINFORCING FABRIC HCR
EMBEDDED IN ONE COAT OF
HYDRALASTIC 836 WITH
SECOND COAT OF
HYDRALASTIC OVER
COMPLETE AREA

MEL-ROL LM

INSULATION (by others)

MEL-DRAIN

DETAIL STRIP

W.R. MEADOWS, INC.
300 Industrial Drive
Hampshire, IL 60140-0338
1-800-342-5976
www.wrmeadows.com

SKETCH: **HYDRALASTIC 836
BELOW GRADE
TUNNEL DETAIL**

SKETCH NO: **HYDRA 836 - TD**

DATE: **10/10/2012**