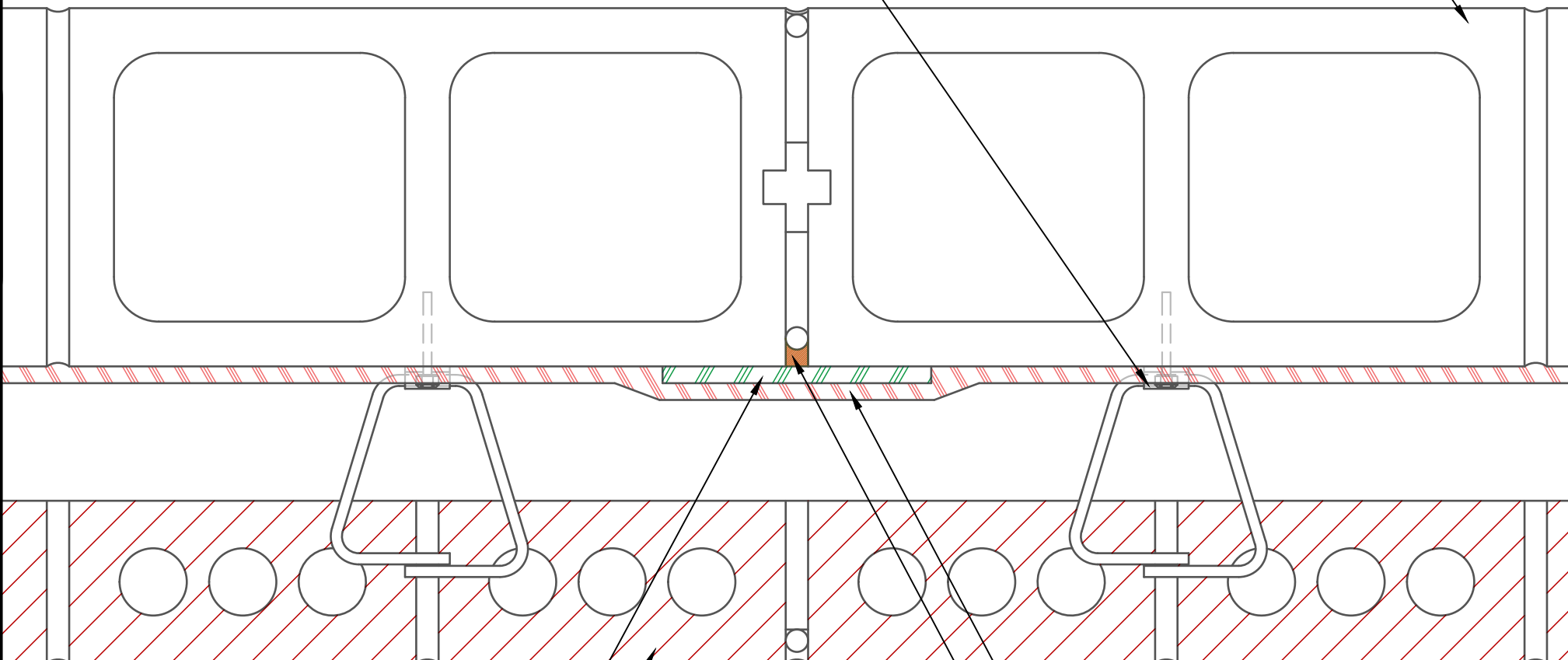


PRE-INSTALLED MASONRY ANCHOR
(SEALED W/ AIR-SHIELD LSR)

INSULATED CMU BU



AIR-SHIELD TRANSITION MEMBRANE (MIN. 6"
(152.4mm) STRIP) (SEAL ALL PENETRATIONS W/ BEAD
OF POINTING MASTIC)(APPLY TO PRIMED SURFACE)

AIR-SHIELD LSR (75 MILS WET) (MIN. 3" (76.2mm)
OVERLAP) (APPLY TO PROPERLY PREPARED SUBSTRATE)

EXTERIOR BRICK WALL

BACKER ROD & BEM SEALANT

NOTE: DETAIL IS A GUIDE FOR INSTALLATIONS OF W. R. MEADOWS PRODUCTS ONLY. DETAIL MUST BE REVIEWED AND VERIFIED BY A DESIGN PROFESSIONAL FOR SUITABILITY ON THE PROJECT. W. R. MEADOWS DOES NOT ASSUME RESPONSIBILITY FOR ERRORS IN DESIGN OR ENGINEERING.

W. R. MEADOWS INC.
300 INDUSTRIAL DR.
HAMPSHIRE, IL 60140-0338
1-800-342-5976

W. R. MEADOWS
SEALTIGHT

TITLE: AIR-SHIELD LSR CMU BU CONTROL JOINT (BEM FILLER)
(EXTERIOR BRICK WALL) (NO INSULATION) (PLANVIEW)

SCALE: DWG NO.:
NTS N/A
DATE: JUNE 9, 2021