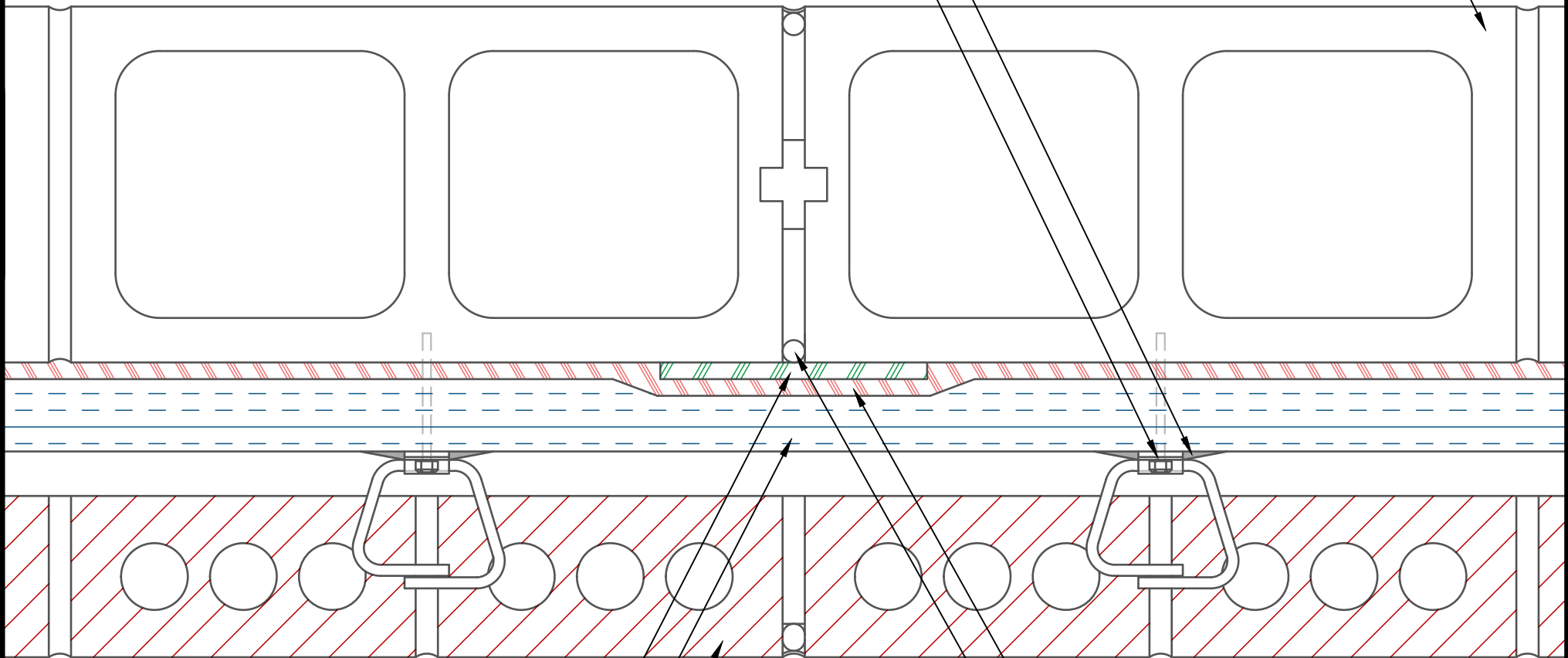


POINTING MASTIC (TO SEAL AROUND MASONRY ANCHOR)

MASONRY ANCHOR (SEALED W/ POINTING MASTIC)

INSULATED CMU BU



AIR-SHIELD TRANSITION MEMBRANE (MIN. 6" (152.4mm) STRIP) (SEAL ALL PENETRATIONS W/ BEAD OF POINTING MASTIC)(APPLY TO PRIMED SURFACE)

RIGID INSULATION (IF REQ'D)

EXTERIOR BRICK WALL

AIR-SHIELD LSR (75 MILS WET) (MIN. 3" (76.2mm) OVERLAP) (APPLY TO PROPERLY PREPARED SUBSTRATE)

BACKER ROD & SEALANT

NOTE: DETAIL IS A GUIDE FOR INSTALLATIONS OF W. R. MEADOWS PRODUCTS ONLY. DETAIL MUST BE REVIEWED AND VERIFIED BY A DESIGN PROFESSIONAL FOR SUITABILITY ON THE PROJECT. W. R. MEADOWS DOES NOT ASSUME RESPONSIBILITY FOR ERRORS IN DESIGN OR ENGINEERING.

W. R. MEADOWS INC.

300 INDUSTRIAL DR.
HAMPSHIRE, IL 60140-0338
1-800-342-5976

W. R. MEADOWS

SEALTIGHT

TITLE:

AIR-SHIELD LSR CMU BU CONTROL JOINT
(EXTERIOR BRICK WALL) (INSULATION) (PLANVIEW)

SCALE: DWG NO.:

NTS N/A

DATE: FEB 26, 2020