

MASONRY ANCHOR (SEALED W/ POINTING MASTIC)

RIGID INSULATION (IF REQ'D)

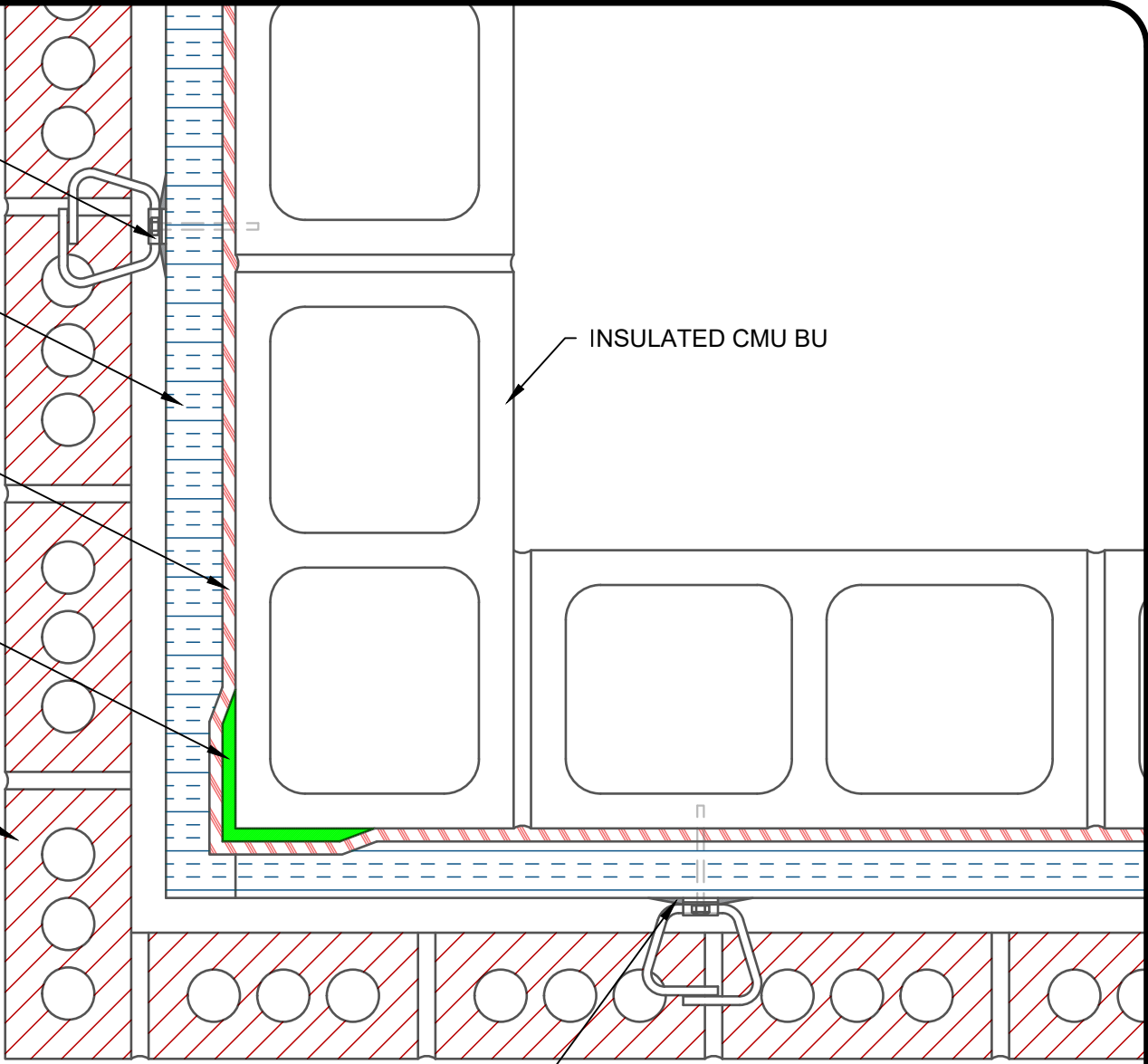
AIR-SHIELD LSR (75 MILS WET) (MIN. 3" (76.2mm) OVERLAP) (APPLY TO PROPERLY PREPARED SUBSTRATE)

AIR-SHIELD LIQUID FLASHING (12-15 MILS SPREAD EVENLY) (MIN. 2" (50.8mm) EXTENDED ONTO SURFACES)

EXTERIOR BRICK WALL

INSULATED CMU BU

POINTING MASTIC (TO SEAL AROUND MASONRY ANCHOR)



NOTE: DETAIL IS A GUIDE FOR INSTALLATIONS OF W. R. MEADOWS PRODUCTS ONLY. DETAIL MUST BE REVIEWED AND VERIFIED BY A DESIGN PROFESSIONAL FOR SUITABILITY ON THE PROJECT. W. R. MEADOWS DOES NOT ASSUME RESPONSIBILITY FOR ERRORS IN DESIGN OR ENGINEERING.

W. R. MEADOWS INC.
300 INDUSTRIAL DR.
HAMPSHIRE, IL 60140-0338
1-800-342-5976

W. R. MEADOWS
SEALTIGHT

TITLE: AIR-SHIELD LSR CMU BU EXTERNAL CORNER (AIR-SHIELD LF) (EXTERIOR BRICK WALL) (INSULATION) (PLANVIEW)

SCALE: NTS
DATE: JULY 6, 2021
DWG NO.: N/A