

MASONRY ANCHOR (SEALED W/ POINTING MASTIC)

RIGID INSULATION (IF REQ'D)

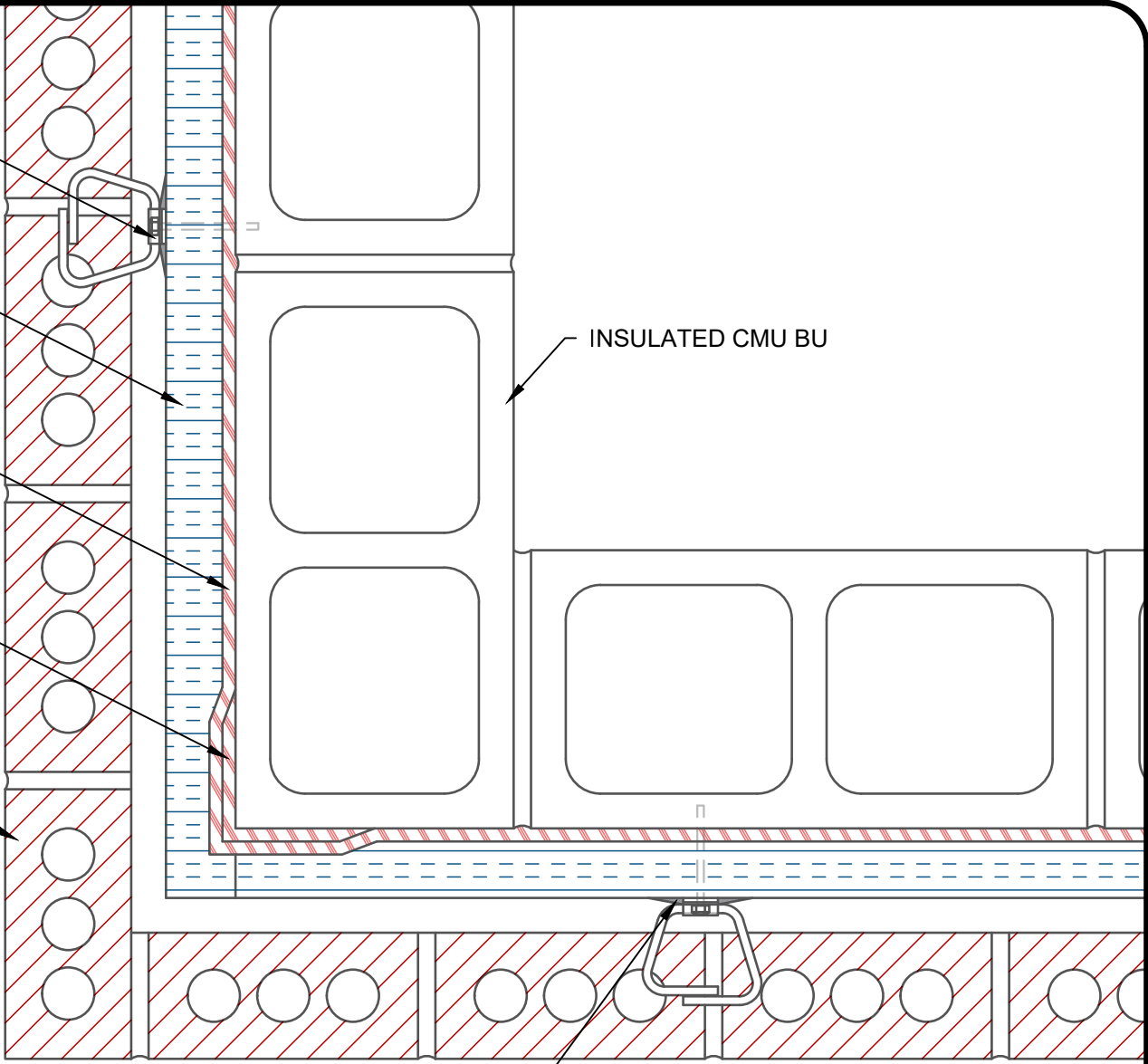
AIR-SHIELD LSR (75 MILS WET) (MIN. 3" (76.2mm) OVERLAP) (APPLY TO PROPERLY PREPARED SUBSTRATE)

AIR-SHIELD LSR DETAIL COAT (30 MILS WET) (MIN. 3" (76.2mm) ONTO SURFACES) (APPLY TO PROPERLY PREPARED SUBSTRATE)

EXTERIOR BRICK WALL

INSULATED CMU BU

POINTING MASTIC (TO SEAL AROUND MASONRY ANCHOR)



NOTE: DETAIL IS A GUIDE FOR INSTALLATIONS OF W. R. MEADOWS PRODUCTS ONLY. DETAIL MUST BE REVIEWED AND VERIFIED BY A DESIGN PROFESSIONAL FOR SUITABILITY ON THE PROJECT. W. R. MEADOWS DOES NOT ASSUME RESPONSIBILITY FOR ERRORS IN DESIGN OR ENGINEERING.

W. R. MEADOWS INC.
300 INDUSTRIAL DR.
HAMPSHIRE, IL 60140-0338
1-800-342-5976

W. R. MEADOWS
SEALTIGHT

TITLE: AIR-SHIELD LSR CMU BU EXTERNAL CORNER (LSR DETAIL COAT) (EXTERIOR BRICK WALL) (INSULATION) (PLANVIEW)

SCALE: NTS
DATE: FEB 26, 2020
DWG NO.: N/A