

POINTING MASTIC (TO SEAL AROUND MASONRY ANCHOR)

INSULATED CMU BU

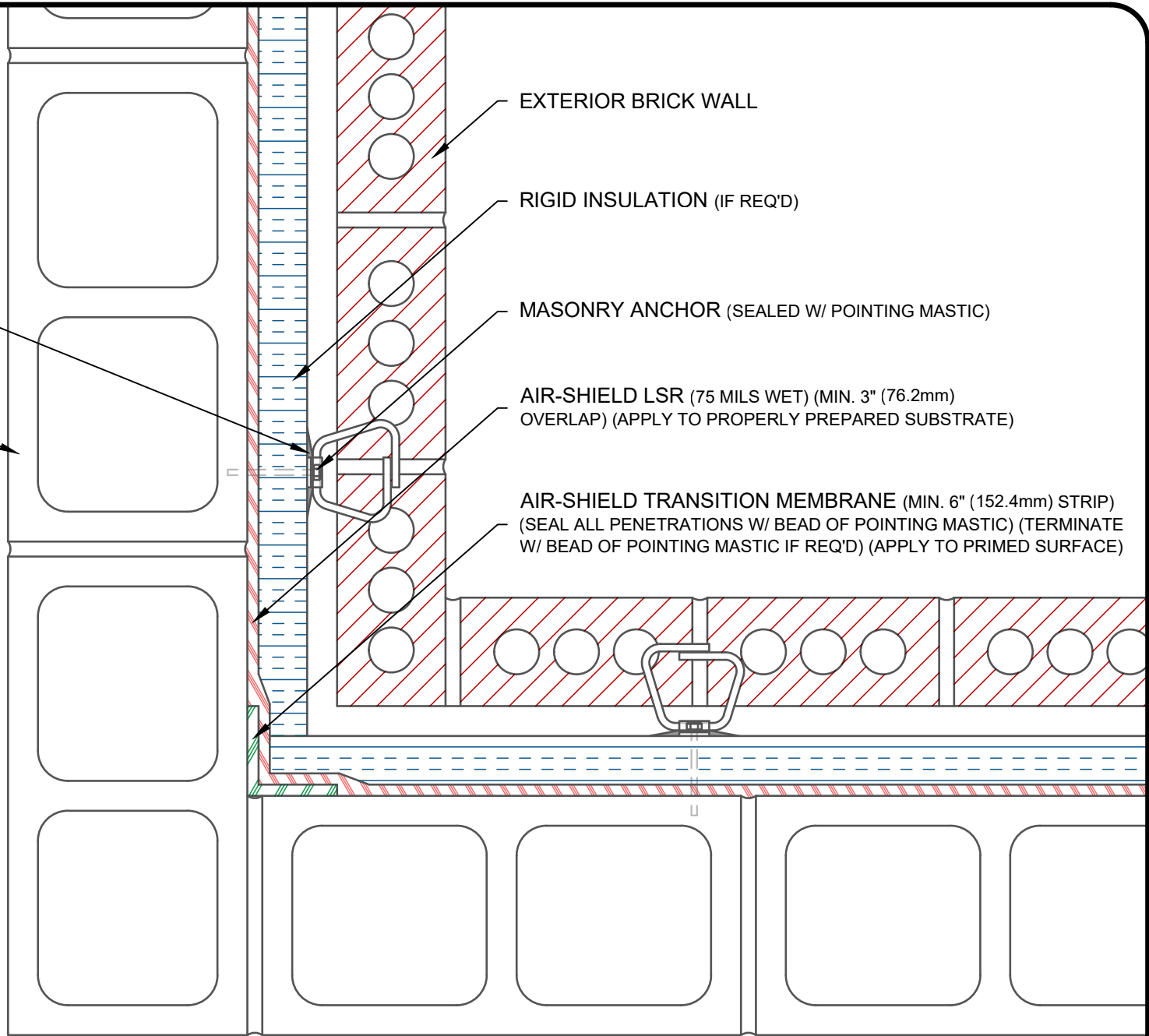
EXTERIOR BRICK WALL

RIGID INSULATION (IF REQ'D)

MASONRY ANCHOR (SEALED W/ POINTING MASTIC)

AIR-SHIELD LSR (75 MILS WET) (MIN. 3" (76.2mm) OVERLAP) (APPLY TO PROPERLY PREPARED SUBSTRATE)

AIR-SHIELD TRANSITION MEMBRANE (MIN. 6" (152.4mm) STRIP) (SEAL ALL PENETRATIONS W/ BEAD OF POINTING MASTIC) (TERMINATE W/ BEAD OF POINTING MASTIC IF REQ'D) (APPLY TO PRIMED SURFACE)



NOTE: DETAIL IS A GUIDE FOR INSTALLATIONS OF W. R. MEADOWS PRODUCTS ONLY. DETAIL MUST BE REVIEWED AND VERIFIED BY A DESIGN PROFESSIONAL FOR SUITABILITY ON THE PROJECT. W. R. MEADOWS DOES NOT ASSUME RESPONSIBILITY FOR ERRORS IN DESIGN OR ENGINEERING.

W. R. MEADOWS INC.
300 INDUSTRIAL DR.
HAMPSHIRE, IL 60140-0338
1-800-342-5976

W. R. MEADOWS
SEAIGHT

TITLE: **AIR-SHIELD LSR CMU BU INTERNAL CORNER (EXTERIOR BRICK WALL) (INSULATION) (PLANVIEW)**

SCALE: **NTS** DWG NO.: **N/A**
DATE: **JULY 7, 2021**