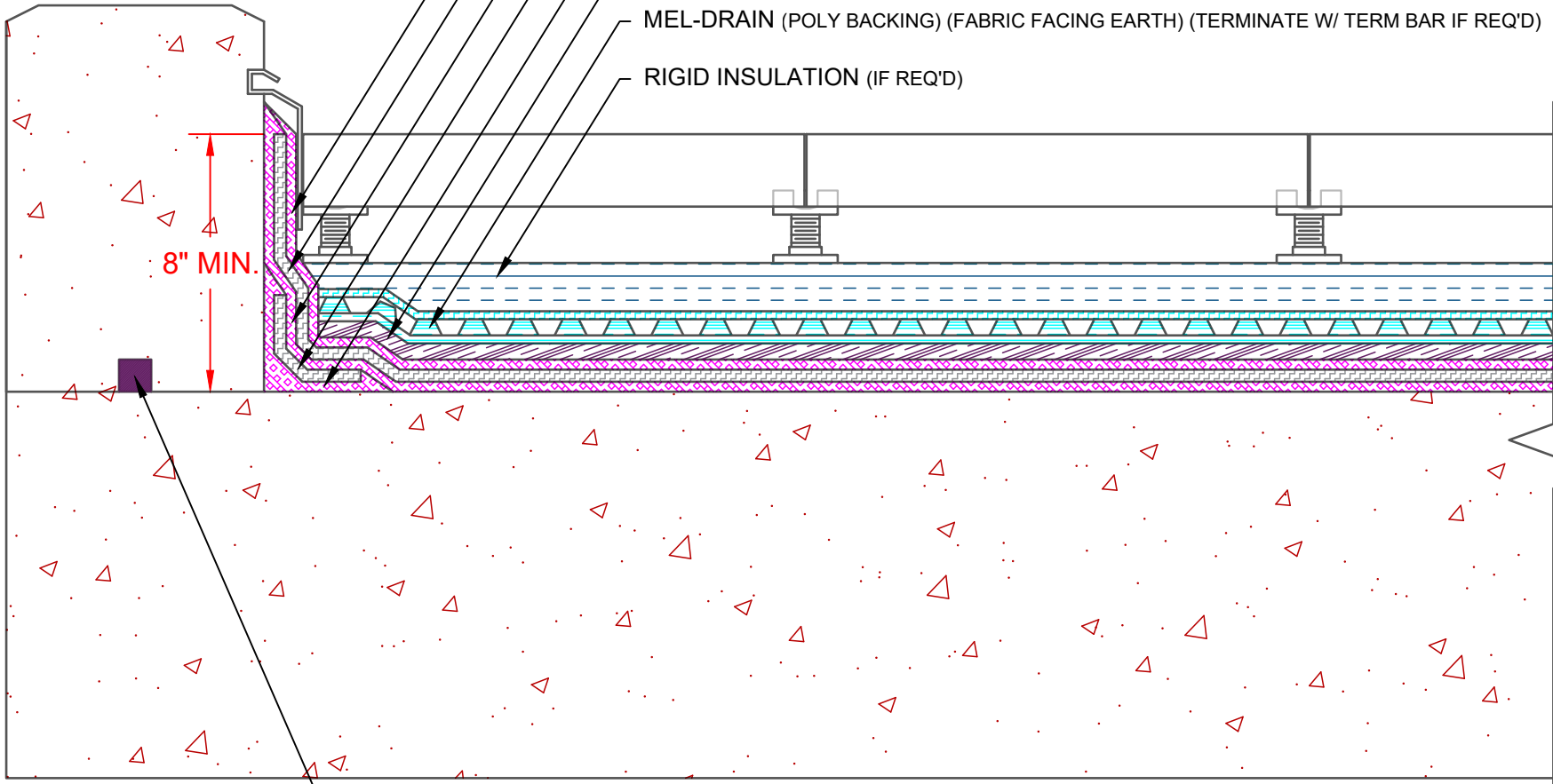


- HRM 714 (2ND LAYER 125MILS)
- REINFORCING FABRIC HCR
- HRM 714 (1ST LAYER 90 MILS) (APPLY TO PROPERLY PREPARED & PRIMED SUBSTRATE)
- REINFORCING FABRIC HCR (6" (152.4mm) STRIP CENTERED)
- HRM 714 (125MILS DETAILING LAYER) (APPLY TO PROPERLY PREPARED & PRIMED SUBSTRATE)
- PROTECTION COURSE OR MODIFIED ASPHALT
- MEL-DRAIN (POLY BACKING) (FABRIC FACING EARTH) (TERMINATE W/ TERM BAR IF REQ'D)
- RIGID INSULATION (IF REQ'D)



8" MIN.

WATERSTOP EC

NOTE: DETAIL IS A GUIDE FOR INSTALLATIONS OF W. R. MEADOWS PRODUCTS ONLY. DETAIL MUST BE REVIEWED AND VERIFIED BY A DESIGN PROFESSIONAL FOR SUITABILITY ON THE PROJECT. W. R. MEADOWS DOES NOT ASSUME RESPONSIBILITY FOR ERRORS IN DESIGN OR ENGINEERING.

W. R. MEADOWS INC.
 300 INDUSTRIAL DR.
 HAMPSHIRE, IL 60140-0338
 1-800-342-5976



TITLE: **HRM 714 @ CURB (PAVERS)**

SCALE: **NTS**
 DATE: **MAR 7, 2022**
 DWG NO.: **HRM714-26**