

PROTECTION COURSE OR MODIFIED ASPHALT

HRM 714 (2ND LAYER 125MILS)

REINFORCING FABRIC HCR

HRM 714 (1ST LAYER 90 MILS) (APPLY TO PROPERLY PREPARED & PRIMED SUBSTRATE)

DETAIL STRIP OR MEL-ROL STRIP (MIN. 9" (228.6mm) STRIP CENTERED) (TERMINATE W/ BEAD OF POINTING MASTIC IF REQ'D) (APPLY MEL-PRIME TO SURFACE PRIOR TO APPLICATION)

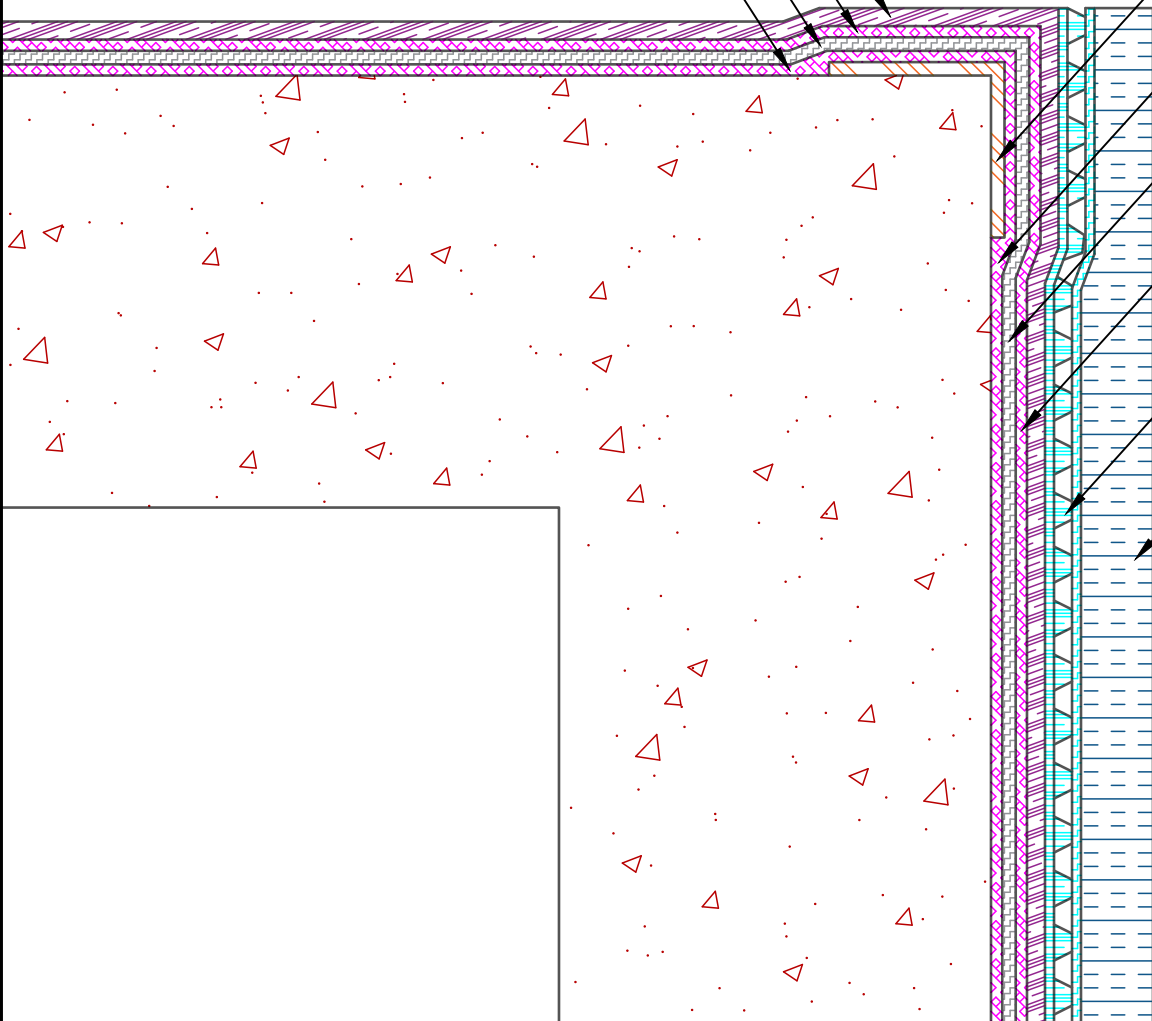
HRM 714 (1ST LAYER 90 MILS) (APPLY TO PROPERLY PREPARED & PRIMED SUBSTRATE)

REINFORCING FABRIC HCR

HRM 714 (2ND LAYER 125MILS)

MEL-DRAIN (FABRIC FACING EARTH) (TERMINATE W/ TERM BAR IF REQ'D)

RIGID INSULATION (IF REQ'D)



NOTE: DETAIL IS A GUIDE FOR INSTALLATIONS OF W. R. MEADOWS PRODUCTS ONLY. DETAIL MUST BE REVIEWED AND VERIFIED BY A DESIGN PROFESSIONAL FOR SUITABILITY ON THE PROJECT. W. R. MEADOWS DOES NOT ASSUME RESPONSIBILITY FOR ERRORS IN DESIGN OR ENGINEERING.

W. R. MEADOWS INC.
 300 INDUSTRIAL DR.
 HAMPSHIRE, IL 60140-0338
 1-800-342-5976



TITLE: **HRM 714 TRANSITION @ OUTSIDE CORNER
 EDGE (DETAIL STRIP) (MEL-DRAIN) (INSULATION)**

SCALE: **NTS**
 DWG NO.: **HRM714-17**
 DATE: **MAY 7, 2021**