

PROTECTION COURSE OR MODIFIED ASPHALT

HRM 714 (2ND LAYER 125MILS)

REINFORCING FABRIC HCR

HRM 714 (1ST LAYER 90 MILS) (APPLY TO PROPERLY PREPARED & PRIMED SUBSTRATE)

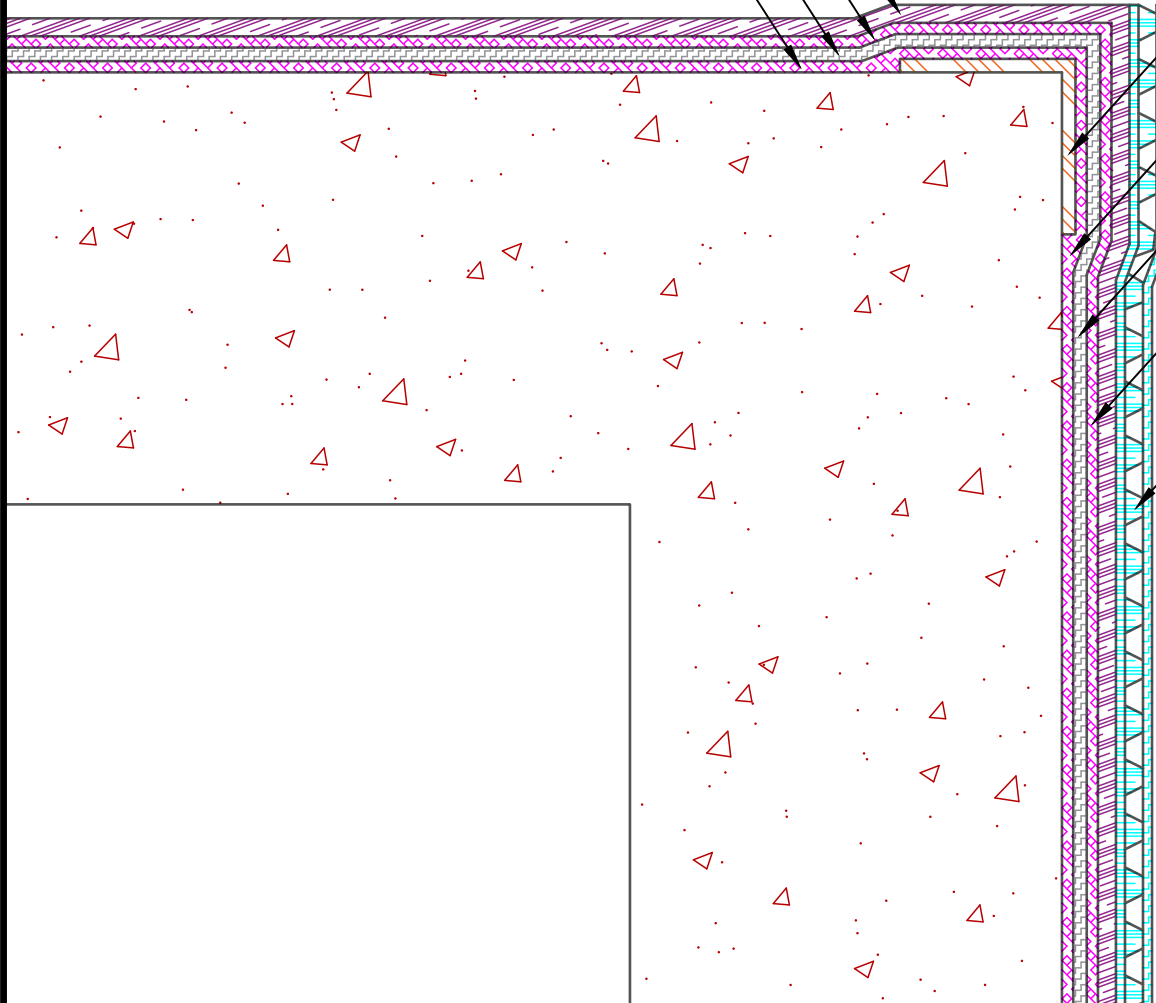
DETAIL STRIP OR MEL-ROL STRIP (MIN. 9" (228.6mm) STRIP CENTERED) (TERMINATE W/ BEAD OF POINTING MASTIC IF REQ'D) (APPLY MEL-PRIME TO SURFACE PRIOR TO APPLICATION)

HRM 714 (1ST LAYER 90 MILS) (APPLY TO PROPERLY PREPARED & PRIMED SUBSTRATE)

REINFORCING FABRIC HCR

HRM 714 (2ND LAYER 125MILS)

MEL-DRAIN (FABRIC FACING EARTH) (TERMINATE W/ TERM BAR IF REQ'D)



NOTE: DETAIL IS A GUIDE FOR INSTALLATIONS OF W. R. MEADOWS PRODUCTS ONLY. DETAIL MUST BE REVIEWED AND VERIFIED BY A DESIGN PROFESSIONAL FOR SUITABILITY ON THE PROJECT. W. R. MEADOWS DOES NOT ASSUME RESPONSIBILITY FOR ERRORS IN DESIGN OR ENGINEERING.

W. R. MEADOWS INC.

300 INDUSTRIAL DR.
HAMPSHIRE, IL 60140-0338
1-800-342-5976



TITLE:

**HRM 714 TRANSITION @ OUTSIDE CORNER EDGE
(DETAIL STRIP) (MEL-DRAIN) (NO INSULATION)**

SCALE:

NTS

DATE:

MAY 7, 2021

DWG NO.:

HRM714-16