

PROTECTION COURSE OR MODIFIED ASPHALT

HRM 714 (2<sup>ND</sup> LAYER 125MILS)

REINFORCING FABRIC HCR

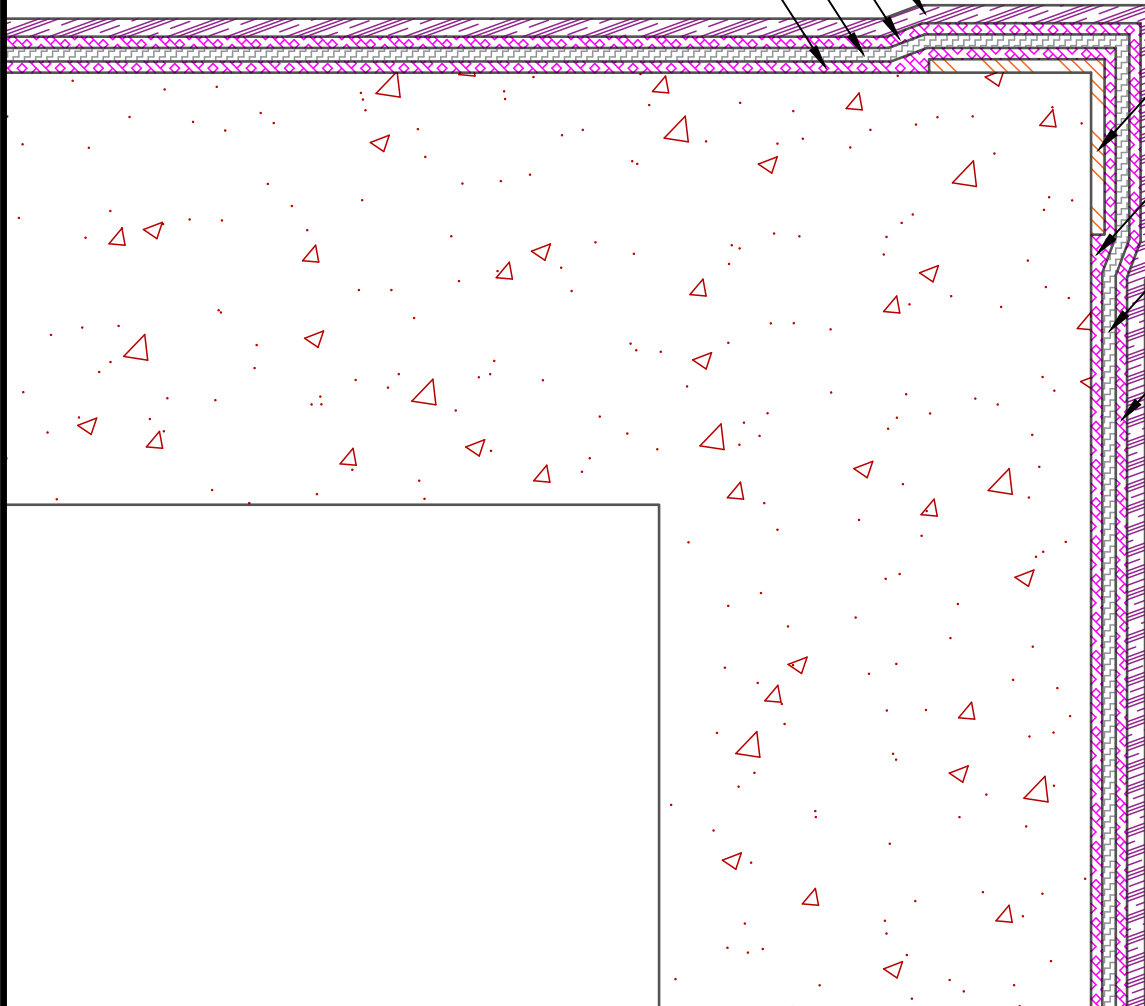
HRM 714 (1<sup>ST</sup> LAYER 90 MILS) (APPLY TO PROPERLY PREPARED & PRIMED SUBSTRATE)

DETAIL STRIP OR MEL-ROL STRIP (MIN. 9" (228.6mm) STRIP CENTERED) (TERMINATE W/ BEAD OF POINTING MASTIC IF REQ'D) (APPLY MEL-PRIME TO SURFACE PRIOR TO APPLICATION)

HRM 714 (1<sup>ST</sup> LAYER 90 MILS) (APPLY TO PROPERLY PREPARED & PRIMED SUBSTRATE)

REINFORCING FABRIC HCR

HRM 714 (2<sup>ND</sup> LAYER 125MILS)



NOTE: DETAIL IS A GUIDE FOR INSTALLATIONS OF W. R. MEADOWS PRODUCTS ONLY. DETAIL MUST BE REVIEWED AND VERIFIED BY A DESIGN PROFESSIONAL FOR SUITABILITY ON THE PROJECT. W. R. MEADOWS DOES NOT ASSUME RESPONSIBILITY FOR ERRORS IN DESIGN OR ENGINEERING.

**W. R. MEADOWS INC.**

300 INDUSTRIAL DR.  
HAMPSHIRE, IL 60140-0338  
1-800-342-5976



TITLE:

**HRM 714 TRANSITION @ OUTSIDE CORNER  
EDGE (DETAIL STRIP) (NO INSULATION)**

SCALE: NTS  
DATE: MAY 6, 2021  
DWG NO.: HRM714-13