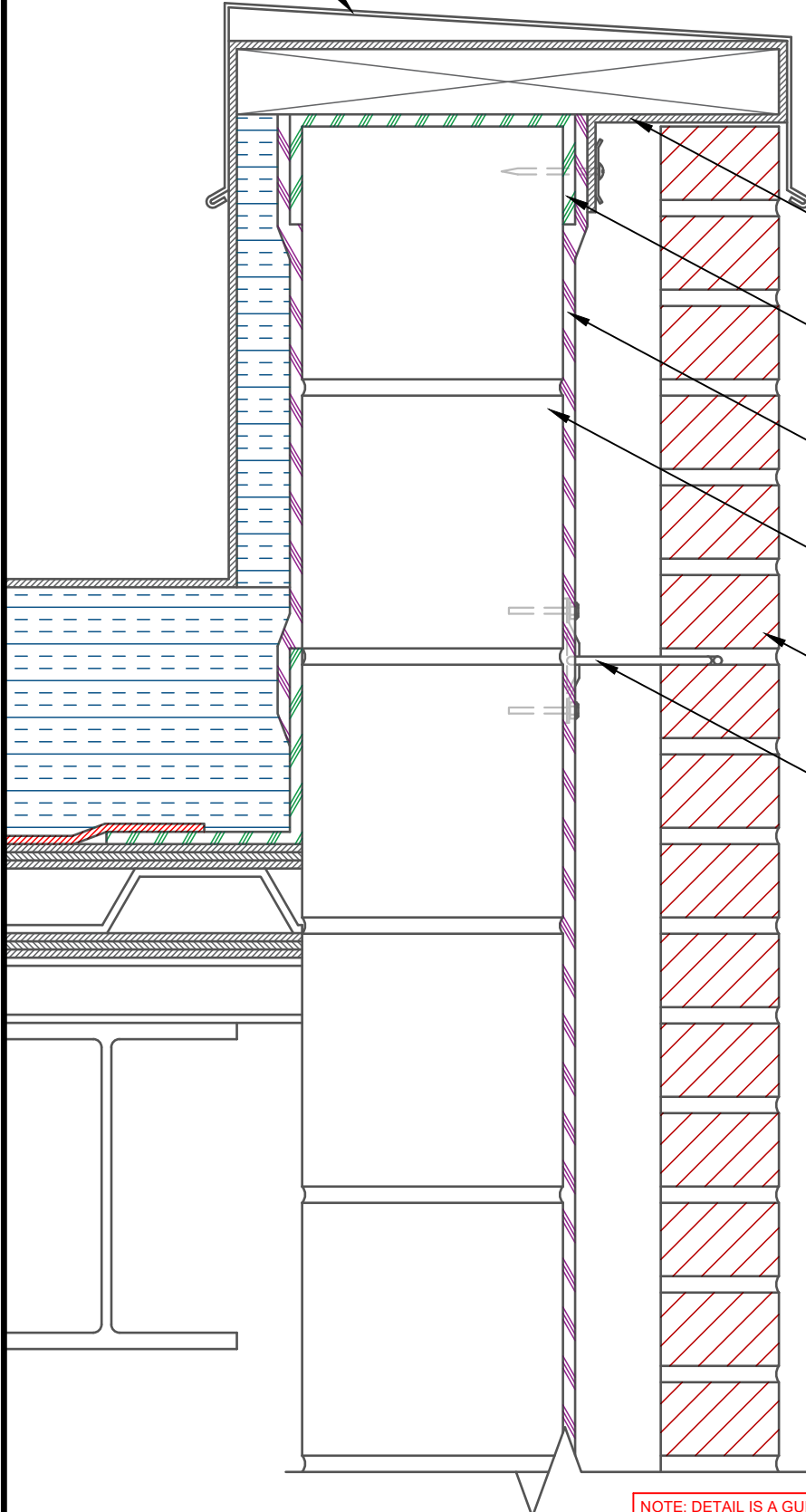


ROOF CAP FLASHING



ROOFING MEMBRANE
(MIN. 3" (76.2mm) OVERLAP)

AIR-SHIELD THRU WALL FLASHING (MIN. 3" (76.2mm) TURNED DOWN CMU) (SEAL ALL PENETRATIONS W/ BEAD OF POINTING MASTIC) (TERMINATE W/ TERM BAR & BEAD OF POINTING MASTIC IF REQ'D) (APPLY TO PRIMED SURFACE)

AIR-SHIELD LMP (60 MILS WET)
(MIN. 3" (76.2mm) OVERLAP) (APPLY TO PROPERLY PREPARED SUBSTRATE)

INSULATED CMU BLOCK

EXTERIOR BRICK WALL

PRE-INSTALLED MASONRY ANCHOR
(SEALED W/ AIR-SHIELD LMP)

NOTE: DETAIL IS A GUIDE FOR INSTALLATIONS OF W. R. MEADOWS PRODUCTS ONLY. DETAIL MUST BE REVIEWED AND VERIFIED BY A DESIGN PROFESSIONAL FOR SUITABILITY ON THE PROJECT. W. R. MEADOWS DOES NOT ASSUME RESPONSIBILITY FOR ERRORS IN DESIGN OR ENGINEERING.