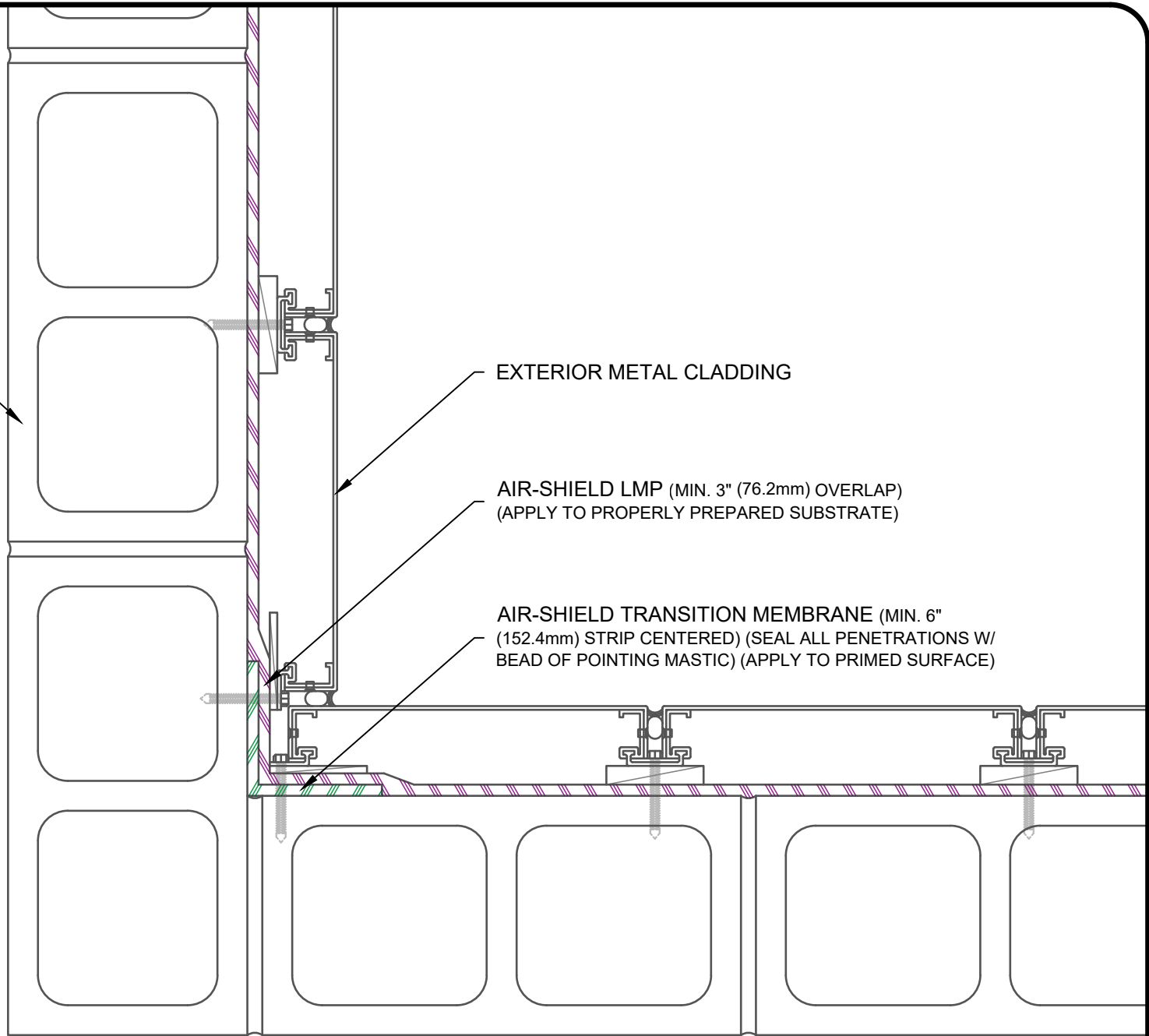


INSULATED CMU BLOCK

EXTERIOR METAL CLADDING

AIR-SHIELD LMP (MIN. 3" (76.2mm) OVERLAP)
(APPLY TO PROPERLY PREPARED SUBSTRATE)

AIR-SHIELD TRANSITION MEMBRANE (MIN. 6"
(152.4mm) STRIP CENTERED) (SEAL ALL PENETRATIONS W/
BEAD OF POINTING MASTIC) (APPLY TO PRIMED SURFACE)



NOTE: DETAIL IS A GUIDE FOR INSTALLATIONS OF W. R. MEADOWS PRODUCTS ONLY. DETAIL MUST BE REVIEWED AND VERIFIED BY A DESIGN PROFESSIONAL FOR SUITABILITY ON THE PROJECT. W. R. MEADOWS DOES NOT ASSUME RESPONSIBILITY FOR ERRORS IN DESIGN OR ENGINEERING.

W. R. MEADOWS INC.

300 INDUSTRIAL DR.
HAMPSHIRE, IL 60140-0338
1-800-342-5976



TITLE:

**AIR-SHIELD LMP CMU BU INTERNAL CORNER
(EXTERIOR METAL CLADDING) (NO INSUL) (PLANVIEW)**

SCALE: DWG NO.:

NTS AS_LMP-74

DATE: **SEP 7, 2021**