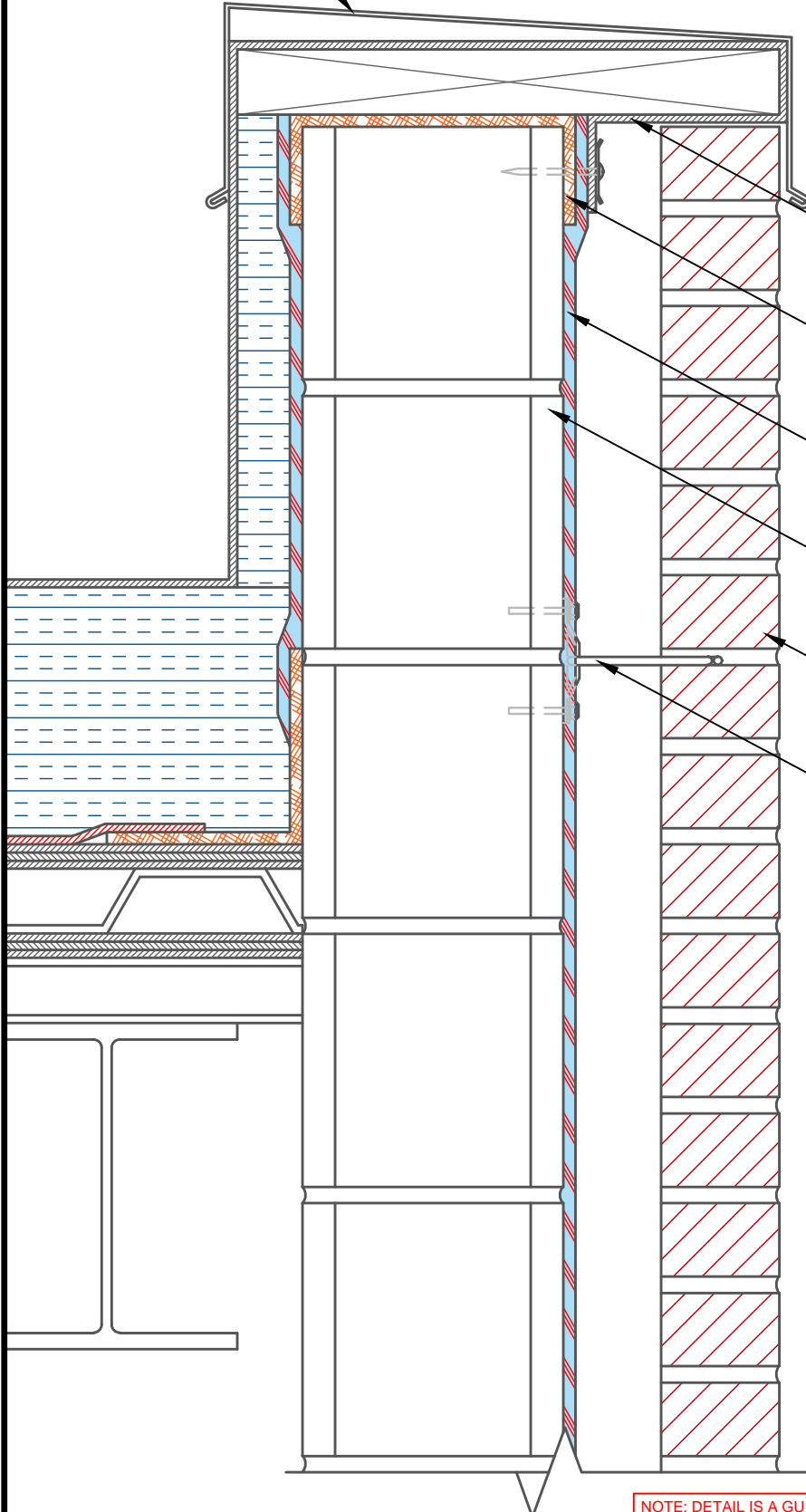


ROOF CAP FLASHING



ROOFING MEMBRANE
(MIN. 3" (76.2mm) OVERLAP)

AIR- SHIELD BUTYL FLASHING (MIN. 3"
(76.2mm) TURNED DOWN CMU) (SEAL ALL
PENETRATIONS W/ BEAD OF POINTING MASTIC)
(TERMINATE W/ TERM BAR & BEAD OF POINTING
MASTIC IF REQ'D) (APPLY TO PRIMED SURFACE)

AIR-SHIELD STPE (60 MILS WET)
(MIN. 3" (76.2mm) OVERLAP) (APPLY TO
PROPERLY PREPARED SUBSTRATE)

INSULATED CMU BLOCK

EXTERIOR BRICK WALL

PRE-INSTALLED MASONRY ANCHOR
(SEALED W/ AIR-SHIELD STPE)

NOTE: DETAIL IS A GUIDE FOR INSTALLATIONS OF W. R. MEADOWS PRODUCTS ONLY. DETAIL MUST BE REVIEWED AND VERIFIED BY A DESIGN PROFESSIONAL FOR SUITABILITY ON THE PROJECT. W. R. MEADOWS DOES NOT ASSUME RESPONSIBILITY FOR ERRORS IN DESIGN OR ENGINEERING.

W. R. MEADOWS INC.

300 INDUSTRIAL DR.
HAMPSHIRE, IL 60140-0338
1-800-342-5976



TITLE:

**AIR-SHIELD STPE CMU BU ROOF TIE-IN @ PARAPET
(SINGLE PLY) (EXTERIOR BRICK WALL) (NO INSUL)**

SCALE:

NTS

DATE:

DWG NO.:

AS_STPE-30

NOV 10, 2025