

PRE-INSTALLED MASONRY ANCHOR (SEALED W/ AIR-SHIELD STPE)

LGMF & BATT INSULATION

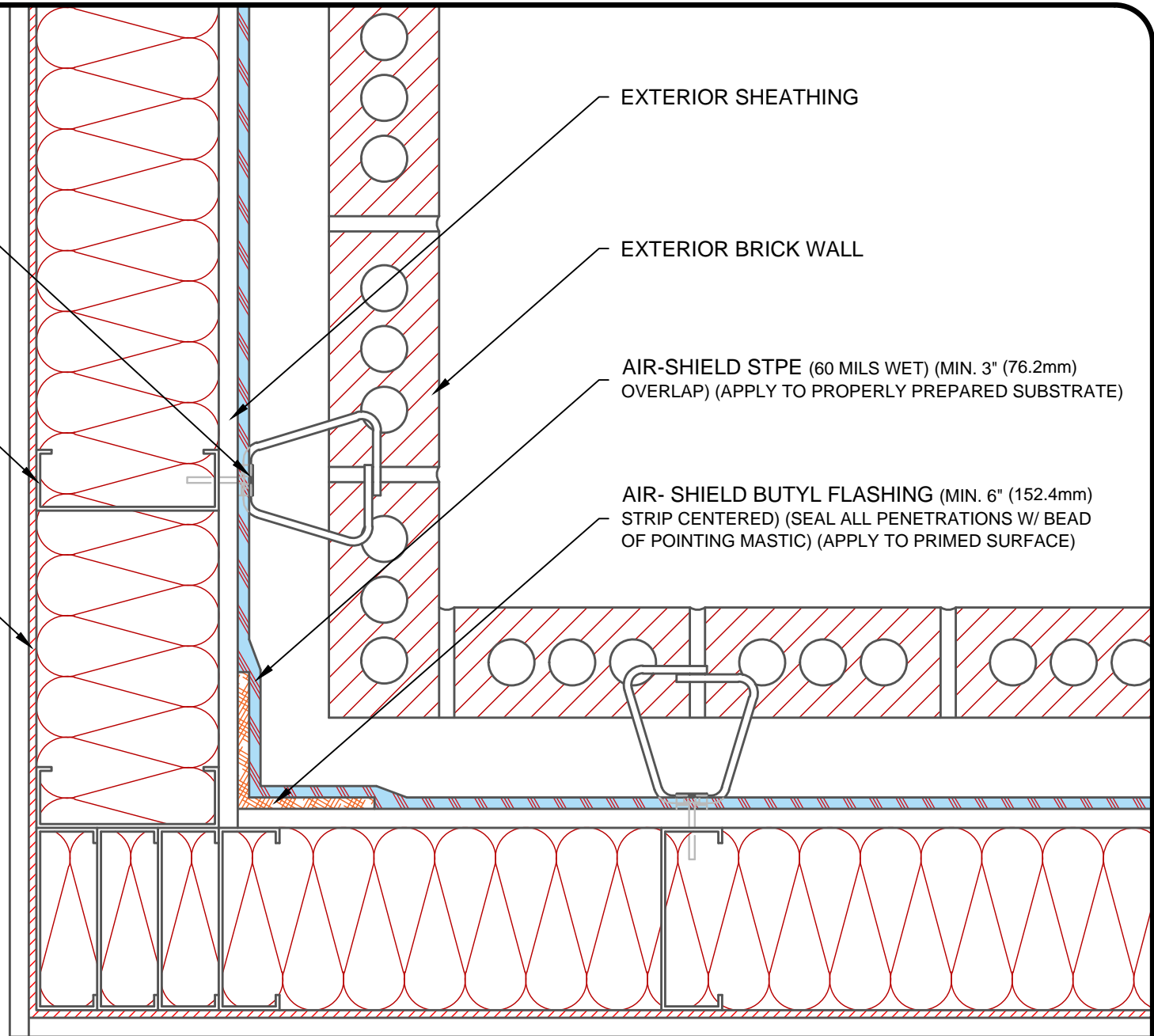
VAPOR BARRIER (IF REQ'D)

EXTERIOR SHEATHING

EXTERIOR BRICK WALL

AIR-SHIELD STPE (60 MILS WET) (MIN. 3" (76.2mm) OVERLAP) (APPLY TO PROPERLY PREPARED SUBSTRATE)

AIR-SHIELD BUTYL FLASHING (MIN. 6" (152.4mm) STRIP CENTERED) (SEAL ALL PENETRATIONS W/ BEAD OF POINTING MASTIC) (APPLY TO PRIMED SURFACE)



NOTE: DETAIL IS A GUIDE FOR INSTALLATIONS OF W. R. MEADOWS PRODUCTS ONLY. DETAIL MUST BE REVIEWED AND VERIFIED BY A DESIGN PROFESSIONAL FOR SUITABILITY ON THE PROJECT. W. R. MEADOWS DOES NOT ASSUME RESPONSIBILITY FOR ERRORS IN DESIGN OR ENGINEERING.

W. R. MEADOWS INC.

300 INDUSTRIAL DR.  
HAMPSHIRE, IL 60140-0338  
1-800-342-5976



TITLE:

AIR-SHIELD STPE LGMF INTERNAL CORNER  
(EXTERIOR BRICK WALL) (NO INSUL) (PLANVIEW)

SCALE: NTS  
DATE: NOV 4, 2025  
DWG NO.: AS\_STPE-15