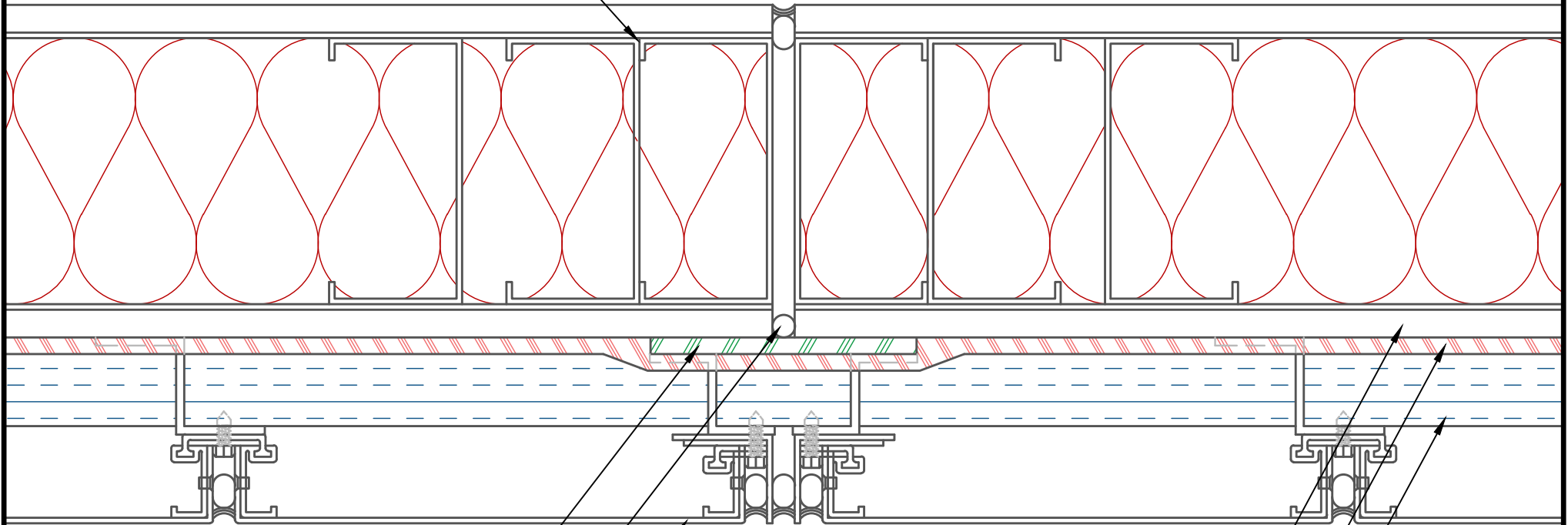


LGMF & BATT INSULATION



AIR-SHIELD TRANSITION MEMBRANE (MIN. 6" (152.4mm) STRIP) (SEAL ALL PENETRATIONS W/ BEAD OF POINTING MASTIC)(APPLY TO PRIMED SURFACE)

BACKER ROD & SEALANT

EXTERIOR METAL CLADDING

EXTERIOR SHEATHING

AIR-SHIELD LSR (75 MILS WET) (MIN. 2" (50.8mm) OVERLAP) (APPLY TO PROPERLY PREPARED SUBSTRATE)

RIGID INSULATION (IF REQ'D)

NOTE: DETAIL IS A GUIDE FOR INSTALLATIONS OF W. R. MEADOWS PRODUCTS ONLY. DETAIL MUST BE REVIEWED AND VERIFIED BY A DESIGN PROFESSIONAL FOR SUITABILITY ON THE PROJECT. W. R. MEADOWS DOES NOT ASSUME RESPONSIBILITY FOR ERRORS IN DESIGN OR ENGINEERING.

W. R. MEADOWS INC.

300 INDUSTRIAL DR.
HAMPSHIRE, IL 60140-0338
1-800-342-5976



TITLE:

AIR-SHIELD LSR LGMF CONTROL JOINT (EXTERIOR METAL CLADDING Z-GIRT) (INSULATION) (PLANVIEW)

SCALE: NTS
DATE: MAR 17, 2026
DWG NO.: AS_LSR-129