

EXTERIOR METAL CLADDING

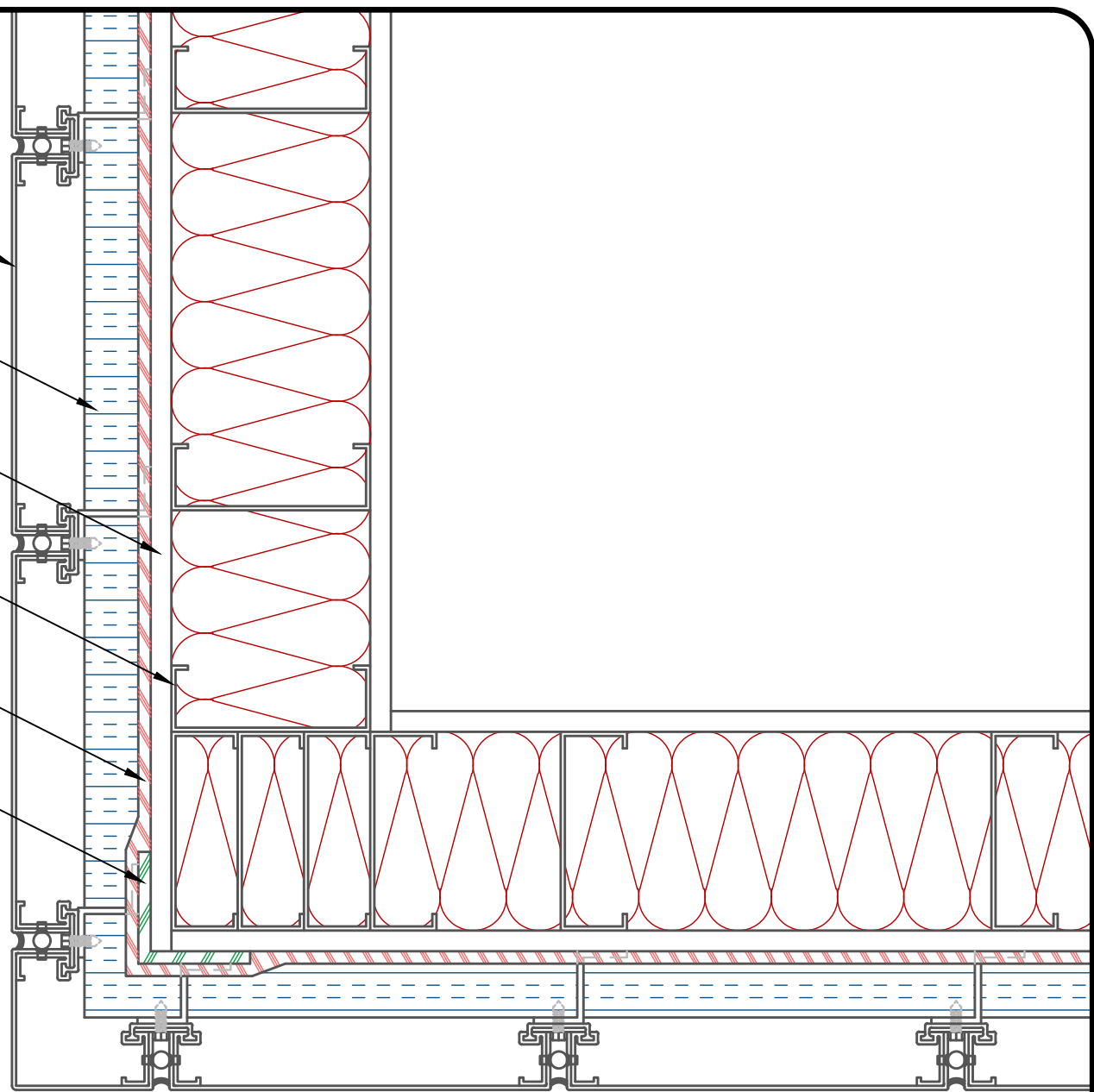
RIGID INSULATION (IF REQ'D)

EXTERIOR SHEATHING

LGMF & BATT INSULATION

AIR-SHIELD LSR (75 MILS WET) (MIN. 2" (50.8mm) OVERLAP) (APPLY TO PROPERLY PREPARED SUBSTRATE)

AIR-SHIELD TRANSITION MEMBRANE (MIN. 6" (152.4mm) STRIP) (SEAL ALL PENETRATIONS W/ BEAD OF POINTING MASTIC) (APPLY TO PRIMED SURFACE)



NOTE: DETAIL IS A GUIDE FOR INSTALLATIONS OF W. R. MEADOWS PRODUCTS ONLY. DETAIL MUST BE REVIEWED AND VERIFIED BY A DESIGN PROFESSIONAL FOR SUITABILITY ON THE PROJECT. W. R. MEADOWS DOES NOT ASSUME RESPONSIBILITY FOR ERRORS IN DESIGN OR ENGINEERING.

W. R. MEADOWS INC.
 300 INDUSTRIAL DR.
 HAMPSHIRE, IL 60140-0338
 1-800-342-5976



TITLE: **AIR-SHIELD LSR LGMF EXTERNAL CORNER (EXTERIOR METAL CLADDING Z-GIRT) (INSULATION) (PLANVIEW)**

SCALE: **NTS**
 DWG NO.: **AS_LSR-128**
 DATE: **MAR 17, 2026**