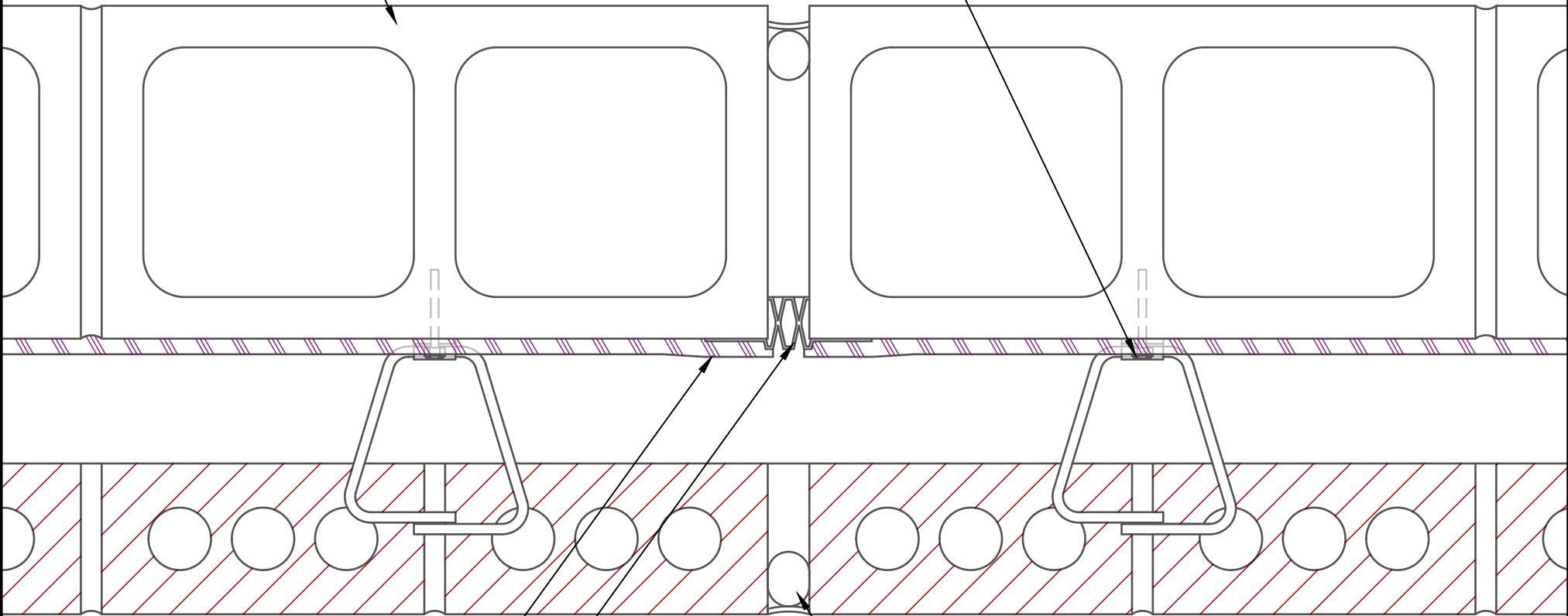


INSULATED CMU BLOCK

PRE-INSTALLED MASONRY ANCHOR
(SEALED W/ AIR-SHIELD LMP)



AIR-SHIELD LMP (60 MILS WET)
(MIN. 3" (76.2mm) OVERLAP) (APPLY TO
PROPERLY PREPARED SUBSTRATE)

BACKER ROD & SEALANT

EXPANSION JOINT COVER

NOTE: DETAIL IS A GUIDE FOR INSTALLATIONS OF W. R. MEADOWS PRODUCTS ONLY. DETAIL MUST BE REVIEWED AND VERIFIED BY A DESIGN PROFESSIONAL FOR SUITABILITY ON THE PROJECT. W. R. MEADOWS DOES NOT ASSUME RESPONSIBILITY FOR ERRORS IN DESIGN OR ENGINEERING.

W. R. MEADOWS INC.

300 INDUSTRIAL DR.
HAMPSHIRE, IL 60140-0338
1-800-342-5976



TITLE:

AIR-SHIELD LMP CMU BU EXPANSION JOINT
(EXTERIOR BRICK WALL) (NO INSUL) (PLANVIEW)

SCALE: DWG NO.:
NTS AS_LMP-16
DATE: FEB 23, 2018